

MAGISTER

HYDRAULICS

PRODUCT CATALOG 2024



FACTORY DIRECT



PRODUCT PREVIEW

CROSS TUBE CYLINDERS


PAGE 12

AG CLEVIS CYLINDERS


PAGE 17

CLEVIS END CYLINDERS


PAGE 20

TIE-ROD CYLINDERS


PAGE 24

PIN EYE CYLINDERS


PAGE 27

TRAILER HOIST CYLINDERS
NEW


PAGE 30

SWIVEL EYE CYLINDERS

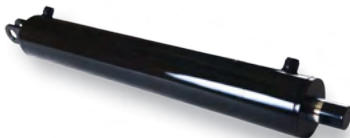

PAGE 32

TANG CYLINDERS
NEW


PAGE 34

LOADER CYLINDERS


PAGE 38

LOG SPLITTER CYLINDERS


PAGE 40

SNOW PLOW CYLINDERS

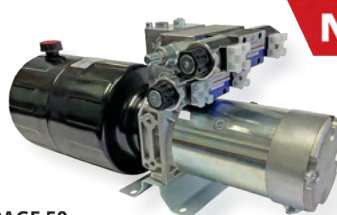

PAGE 42

UNIVERSAL CYLINDERS


PAGE 45

DUMP TRAILER POWER UNITS
NEW


PAGE 49

SNOW PLOW POWER UNITS
NEW


PAGE 50

LIFT GATE POWER UNIT


PAGE 51

WHEELCHAIR LIFT POWER UNIT



PAGE 51

SINGLE ACTING POWER UNITS



PAGE 52

DOUBLE ACTING POWER UNITS



PAGE 54

BIDIRECTIONAL POWER UNIT

NEW



PAGE 56

SINGLE ACTING HAND PUMPS



PAGE 58

DOUBLE ACTING HAND PUMPS



PAGE 59

GEAR PUMPS 5/8" KEYED



PAGE 61

GEAR PUMPS 3/4" KEYED



PAGE 62

GEAR PUMPS 7/8" KEYED



PAGE 63

GEAR PUMPS 9 TOOTH SPLINE



PAGE 64

GEAR PUMPS 13 TOOTH SPLINE



PAGE 65

GEAR PUMPS FLAT TANG DRIVE



PAGE 66

AFTERMARKET GEAR PUMPS



PAGE 67

DIRECTIONAL CONTROL VALVES



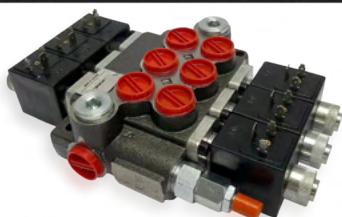
PAGE 71

LOG SPLITTER CONTROL VALVES



PAGE 72

SOLENOID CONTROL VALVES



PAGE 72

HOSE ASSEMBLIES

NEW



PAGE 73

HYDRAULIC ACCESSORIES



PAGE 77

MAGISTER HYDRAULICS

WE STAND BEHIND OUR PRODUCTS



HISTORY

Magister Hydraulics has manufactured and supplied hydraulics since 1998. Our head office is located in Belleville, NJ with production facilities located in Europe.



LOCATION

Magister Hydraulics manufacturing facilities are located in Europe(Bulgaria).



MANUFACTURING

We specialize in the manufacturing of hydraulic cylinders, hydraulic gear pumps, power units, and other hydraulic components for various types of equipment.



WARRANTY

All products represented in the North American market comply with the US standards and include a hassle-free 1 or 2-year warranty.



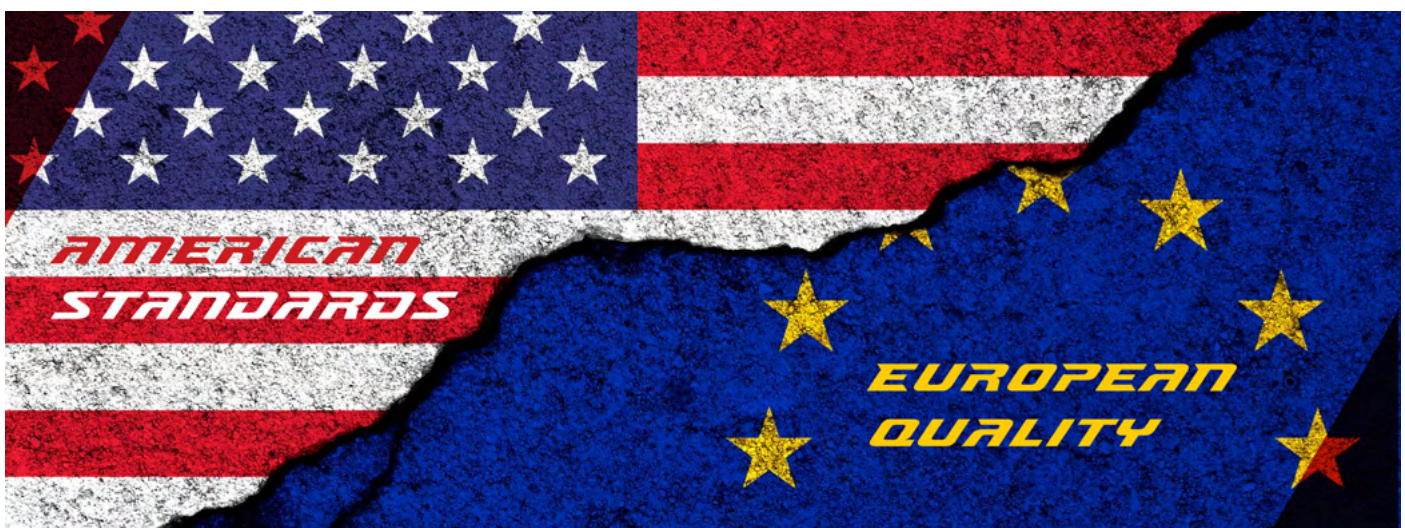
EXTREME ENVIRONMENTS

Our manufacturing and design techniques provide product reliability in extreme environments from tundra to tropics.



ISO 9001:2015

Magister Hydraulics factories operate under the ISO 9001:2015 quality certificate. We pride ourselves in only using high-quality materials and innovative technologies to produce top quality heavy-duty hydraulic products.



OUR VALUES



Lifelong relationships with clients.



We stand behind our products.



Consistent top quality products.



Deliver promises.



Flexible approach to customer needs.



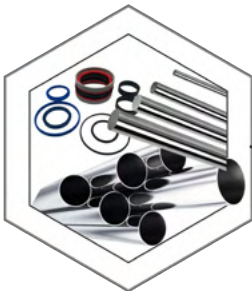
VISION

To help people lift, push, and pull their business.

MISSION

To supply reliable hydraulics at an affordable price.

PRODUCTION



COMPONENTS

At Magister Hydraulics we have all the main essential components for hydraulic cylinders and other hydraulic products (gear pumps, control valves, power units) with exceptional attention and precision (from metal processing to assembly and painting).



EQUIPMENT

Products are built using modern equipment:

- DN solutions - CNC turning and milling machines
- Lincoln Electric - welding robotic equipment



PRODUCTION

In production, we use honed tubes, chrome-plated bars, and sealing components directly from industry-leading European suppliers.



BEST PRACTICE

Magister Hydraulics uses the best European practices in the production of cylinders. The durable steel piston and steel threaded gland, along with top quality nylon glass guide rings and 5-component compact piston seals, provide extra durability and efficiency for the cylinders in comparison to any regular ductile iron components. All of the cylinders are put through a pressure test at 150% working pressure prior to final inspection.



PAINTING

Painting is performed on industrial equipment with the requirements for protective coating.

WARRANTY

All standard hydraulic cylinders manufactured by Magister Hydraulics include a 2-year limited warranty from the date of purchase. Warranty terms for custom-built cylinders are based on individual agreements and may vary. Defected products shall be returned and replaced at no additional cost. Shipping arrangements should be made directly with our local representatives.

QUALITY CONTROL

Magister Hydraulics Quality Policy is determined by the following principles:

- ◆ Understanding and meeting the needs of our clients.
- ◆ Development of new and improvement of existing production technologies to establish the highest quality standards.
- ◆ Testing the product for the required working conditions.
- ◆ Increase the efficiency of our employees to meet quality requirements.
- ◆ Quality control of all materials used in manufacturing.
- ◆ Compliance and continuous improvement of the quality management system based on the international standard ISO 9001:2015.
- ◆ Exact conformity of the product to the submitted drawings with dimensional control at every stage of product manufacturing.

Quality control of hydraulic cylinders is carried out at every stage of production:

- Examination of raw materials before processing
- Precise accordance of product to the drawings provided
- Dimensional control at every stage of production
- Product testing for required working pressure
- Visual inspection at every production stage
- Ongoing employee qualification training



CUSTOM OEM

Magister Hydraulics has extensive experience in supplying various custom hydraulic equipment.

LOCATIONS OF MANUFACTURING FACILITIES

Our manufacturing facilities are located in Europe, with raw materials supplied from Romania, Germany, Switzerland, and Italy. All of the hydraulic cylinders are made using only high-end equipment from Southern Korea, Germany, and Italy.

TOP-QUALITY PRODUCTS

Therefore, we have built only top-quality products for our customers' needs since 1998. We manufacture and supply anything from:

We are a full-scale hydraulic equipment manufacturer with a full staff of engineering, production, quality control, sales, and customer service departments.

HARSH CLIMATE CONDITIONS

Magister Hydraulic Cylinders have been used in numerous unique applications with harsh climate conditions, including offshore exploration, heavy-duty construction, mining, marine, agriculture, and material handling.

HYDRAULIC CYLINDERS



HYDRAULIC POWER UNITS



HYDRAULIC GEAR PUMPS



HYDRAULIC HAND PUMPS



HYDRAULIC CONTROL VALVES



HYDRAULIC HOSE ASSEMBLIES



RANGE OF SERVICES

We offer a full range of services, from hydraulic cylinder design to on-time delivery, all supported by excellent customer service.

EXPERTISE

Clients trust us to provide expertise for hydraulic design, ongoing support, and quick responsiveness to any inquiries.

CHALLENGES

Our engineers and project managers always have creative ideas to solve any complex challenges for our clients when it comes to individual needs.

BENEFITS OF MAGISTER HYDRAULICS



The Leader in High-Volume, Small-Diameter Hydraulic Cylinder Solutions



All hydraulic components are tariff-free.



Custom-made cylinders require only a minimum of 25-50, depending on the size of the cylinder.



We offer very flexible terms for any manufacturer that has needs for hydraulic components.



On-time delivery is always included



ISO Certified under ISO 9001:2015.



Exceptional quality control.



High-quality European materials.



Standard-size hydraulic components from the shelf along with custom hydraulics.



Supreme cylinder design features



Free quotes are provided in a timely manner.



A 2-year limited warranty or more, if requested

DEALER BENEFITS

% 30% Discount



Net 30 Terms Available



Free Ground Continental Shipping



Dropship



Local Business Promotion



Personal Online Account

HYDRAULIC CYLINDERS



Magister Hydraulic Cylinders are designed specifically for applications ranging from construction and agriculture to material handling and manufacturing. All of the Magister Hydraulic Cylinders are manufactured in Europe under an ISO 9001:2015 quality certificate and in accordance with US industrial standards.

STANDARD OPTIONS:

- **Bore:** 1.5"-6" Ø
- **Rod:** 1"-3" Ø, chrome plated rod steel 1045, NOT induction hardened!
- **Stroke:** 4"-60" inches
- **Type:** welded, tie-rod
- **Rod End:** Cross Tube, Clevis, Pin Eye, Swivel Eye
- **Action:** Double Acting, Single Acting

CUSTOM OPTIONS AVAILABLE (50 ITEMS MIN. ORDER):

CYLINDER BORE DIAMETER:
From 1" to 8"

CYLINDER ROD DIAMETER:
From 0.5" to 5"

CYLINDER STROKE LENGTH:
From 1" to 120" (10 feet)

OPERATING PRESSURE:
From 1500 PSI to 5000 PSI

HYDRAULIC ROD OPTIONS:
Chrome plated, double chrome, triple chrome, nickel chrome, stainless steel, and induction hardened options

MOUNTING OPTIONS:
Essentially any custom flanges your application might need.

HYDRAULIC CYLINDER SEALS:
Seals are made up to the cylinder specs, depending on the cycle usage.

CYLINDER LIFE SPAN:
The cylinder is made up to the customer's requirements, including extended cylinder life.

TEMPERATURE RANGE:
From -65 F to +300 F

CYLINDER CUSHIONS:
Fixed and adjustable cushions, rod, and welded sides cushions.

PRIVATE LABEL:
Is available upon request. The cylinders will be branded according to the customer's needs.

PACKAGING:
From cardboard, boxes, and bubble wrap to custom logo & engraving options.

PAINT & FINISH:
Standard, automobile, and high-temperature options for paint of any RAL color.

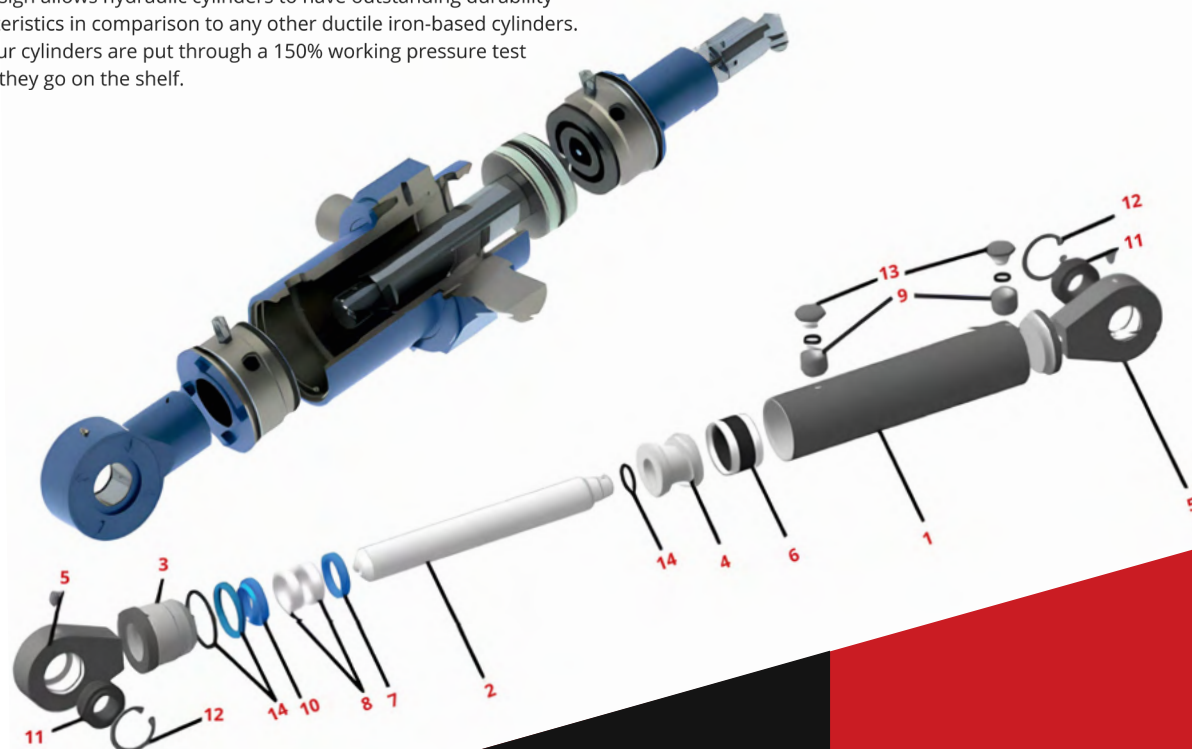
CYLINDER INTEGRATIONS:
Check pilot valves, counterbalance valves, solenoid controls, etc.

TECHNOLOGY

The technology we use in Magister Hydraulics Cylinders is one of the best European practices. Steel pistons and steel glands with nylon glass guide rings and five-component compact piston seals provide extra durability and life expectancy for the cylinders.

This design allows hydraulic cylinders to have outstanding durability characteristics in comparison to any other ductile iron-based cylinders. All of our cylinders are put through a 150% working pressure test before they go on the shelf.

Magister Hydraulics has in stock a variety of standard welded hydraulic cylinders with Clevis, Cross Tube, Pin Eye, Tang, Swivel Eye ends, and others. A detailed overview of the standard cylinders is presented below.



TYPE:

**WELDED DOUBLE-ACTING
HEAVY-DUTY HYDRAULIC
CYLINDER**

1

TUBE:

High-tensile-honed
cold-drawn tube
(C1035 steel)

2

ROD:

High-tensile ground
and polished hard
chrome-plated rod
(1045 steel)

3

GLAND:

Precision threaded
gland with wear
rings for long life
(1045 steel)

4

PISTON:

High-tensile steel for
heavy-duty
applications (1045
steel)

5

SWIVEL EYE ENDS:

Durable steel items

6

PISTON SEALS:

Top-quality five-
component compact
seals for excellent
performance

7

ROD SEALS:

Standard U-cup
polyurethane rod
seal with inner O-
ring

8

GUIDE RINGS:

POM-C wear rings
and polyurethane
wiper

9

PORTS:

SAE O-ring

10

WIPER:

High-quality
polyurethane wiper

11

SWIVEL ITEMS:

Bearings

12

CLIPS:

Bearing Securing
Clip

13

PLUGS:

Steel plugs with O-
rings

14

SEAL:

Sealing O-rings

CROSS TUBE WELDED CYLINDER 3500 PSI

SPECIFICATIONS

Bore:	1.5" - 6"
Type:	Welded hydraulic cylinder
Action:	Double acting
Ends:	Welded cross tube
Rod:	Standard chrome plated rod steel 1045
Stroke:	4"-60"
Pressure:	3500 PSI
Color:	Black.



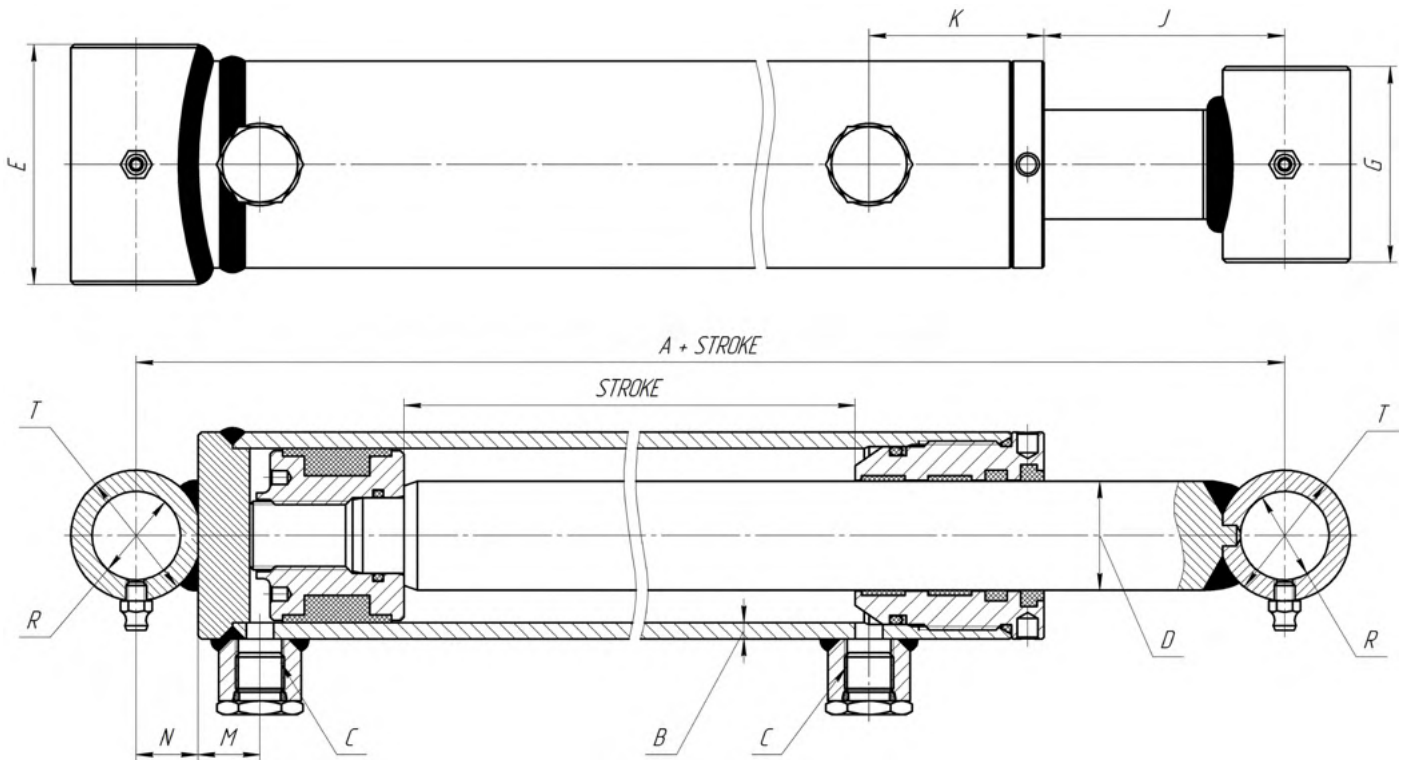
Free Ground
US Shipping



Made in
Europe



2 Year
Warranty



BORE	A	B	C	D	E	G	J		K	M	N	R	T
							Stroke 4...20	Stroke 24...36					
1.5"	8.0"	.19"	SAE 6	1.0"	2.0"	2.0"	3.17"	n/a	2.17"	.83"	.63"	.76"	1.25"
2.0"	8.0"	.19"	SAE 6	1.25"	2.75"	2.25"	2.76"	1.95"	2.05"	.83"	.75"	1.02"	1.5"
2.5"	8.0"	.19"	SAE 8	1.5"	3.25"	2.25"	2.74"	1.95"	2.05"	.83"	.75"	1.02"	1.5"
3.0"	8.0"	.19"	SAE 8	1.5"	3.75"	2.25"	2.54"	1.75"	2.13"	.85"	.75"	1.02"	1.5"
3.5"	10.0"	.19"	SAE 8	1.75"	4.25"	2.25"	4.27"	3.28"	2.13"	.85"	1.0"	1.26"	2.0"
4.0"	10.0"	.25"	SAE 8	2.0"	4.75"	2.5"	3.76"	2.78"	2.48"	.85"	1.13"	1.52"	2.25"
5.0"	11.0"	.25"	SAE 12	2.5"	5.75"	4.0"	3.3"	3.3"	3.05"	.98"	1.23"	1.52"	2.5"
6.0"	11.0"	.31"	SAE 12	3.0"	6.75"	4.0"	n/a	2.92"	3.39"	1.06"	1.2"	1.52"	2.5"

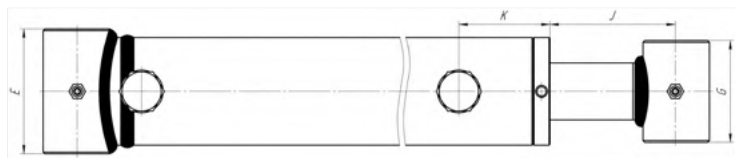
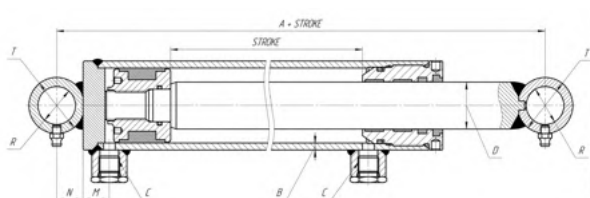
1.5" BORE Cross Tube Welded Double Acting Hydraulic Cylinders 3500 PSI										
SKU	BORE (INCH)	STROKE (INCH)	ROD Ø (INCH)	RETRACTED (INCH)	EXTENDED (INCH)	PIN Ø (INCH)	PORT SIZE	COLUMN LOAD	WEIGHT LBS	LIST PRICE
WCT 1.5X4	1.5	4	1	12	16	0.75	SAE 6	5,300	7	\$139
WCT 1.5X6	1.5	6	1	14	20	0.75	SAE 6	5,300	8	\$146
WCT 1.5X8	1.5	8	1	16	24	0.75	SAE 6	5,300	9	\$153
WCT 1.5X10	1.5	10	1	18	28	0.75	SAE 6	5,300	10	\$160
WCT 1.5X12	1.5	12	1	20	32	0.75	SAE 6	5,300	11	\$166
WCT 1.5X14	1.5	14	1	22	36	0.75	SAE 6	5,300	12	\$172
WCT 1.5X16	1.5	16	1	24	40	0.75	SAE 6	5,300	13	\$178
WCT 1.5X18	1.5	18	1	26	44	0.75	SAE 6	5,300	14	\$184
WCT 1.5X20	1.5	20	1	28	48	0.75	SAE 6	5,300	15	\$190
WCT 1.5X22	1.5	22	1	30	52	0.75	SAE 6	4,620	16	\$195
WCT 1.5X24	1.5	24	1	32	56	0.75	SAE 6	4,210	18	\$199

2" BORE		Cross Tube Welded Double Acting Hydraulic Cylinders 3500 PSI								
SKU	BORE (INCH)	STROKE (INCH)	ROD Ø (INCH)	RETRACTED (INCH)	EXTENDED (INCH)	PIN Ø (INCH)	PORT SIZE	COLUMN LOAD	WEIGHT LBS	LIST PRICE
WCT 2X4	2	4	1.25	12	16	1	SAE 6	9,400	10	\$163
WCT 2X6	2	6	1.25	14	20	1	SAE 6	9,400	12	\$171
WCT 2X8	2	8	1.25	16	24	1	SAE 6	9,400	13	\$176
WCT 2X10	2	10	1.25	18	28	1	SAE 6	9,400	15	\$181
WCT 2X12	2	12	1.25	20	32	1	SAE 6	9,400	16	\$191
WCT 2X14	2	14	1.25	22	36	1	SAE 6	9,400	18	\$199
WCT 2X16	2	16	1.25	24	40	1	SAE 6	9,400	19	\$205
WCT 2X18	2	18	1.25	26	44	1	SAE 6	9,400	21	\$212
WCT 2X20	2	20	1.25	28	48	1	SAE 6	9,400	22	\$219
WCT 2X22	2	22	1.25	30	52	1	SAE 6	8,800	24	\$225
WCT 2X24	2	24	1.25	32	56	1	SAE 6	8,400	25	\$233
WCT 2X26	2	26	1.25	34	60	1	SAE 6	7,200	26	\$240
WCT 2X28	2	28	1.25	36	64	1	SAE 6	6,200	28	\$247
WCT 2X30	2	30	1.25	38	68	1	SAE 6	5,700	30	\$255
WCT 2X32	2	32	1.25	40	72	1	SAE 6	5,200	31	\$263
WCT 2X36	2	36	1.25	44	80	1	SAE 6	4,100	34	\$276
WCT 2X48	2	48	1.25	56	104	1	SAE 6	3,200	44	\$299

2.5" BORE		Cross Tube Welded Double Acting Hydraulic Cylinders 3500 PSI								
SKU	BORE (INCH)	STROKE (INCH)	ROD Ø (INCH)	RETRACTED (INCH)	EXTENDED (INCH)	PIN Ø (INCH)	PORT SIZE	COLUMN LOAD	WEIGHT LBS	LIST PRICE
WCT 2.5X4	2.5	4	1.5	12	16	1	SAE 8	14,700	14	\$180
WCT 2.5X6	2.5	6	1.5	14	20	1	SAE 8	14,700	16	\$189
WCT 2.5X8	2.5	8	1.5	16	24	1	SAE 8	14,700	18	\$197
WCT 2.5X10	2.5	10	1.5	18	28	1	SAE 8	14,700	20	\$205
WCT 2.5X12	2.5	12	1.5	20	32	1	SAE 8	14,700	22	\$213
WCT 2.5X14	2.5	14	1.5	22	36	1	SAE 8	14,700	24	\$221
WCT 2.5X16	2.5	16	1.5	24	40	1	SAE 8	14,700	25	\$229
WCT 2.5X18	2.5	18	1.5	26	44	1	SAE 8	14,700	27	\$239
WCT 2.5X20	2.5	20	1.5	28	48	1	SAE 8	14,700	30	\$250
WCT 2.5X22	2.5	22	1.5	30	52	1	SAE 8	14,700	32	\$258
WCT 2.5X24	2.5	24	1.5	32	56	1	SAE 8	14,700	34	\$265
WCT 2.5X26	2.5	26	1.5	34	60	1	SAE 8	13,700	36	\$272
WCT 2.5X28	2.5	28	1.5	36	64	1	SAE 8	12,700	38	\$279
WCT 2.5X30	2.5	30	1.5	38	68	1	SAE 8	11,700	40	\$287
WCT 2.5X32	2.5	32	1.5	40	72	1	SAE 8	10,600	42	\$295
WCT 2.5X36	2.5	36	1.5	44	80	1	SAE 8	8,400	46	\$309
WCT 2.5X40	2.5	40	1.5	48	88	1	SAE 8	6,200	50	\$325
WCT 2.5X42	2.5	42	1.5	50	92	1	SAE 8	6,200	52	\$333
WCT 2.5X48	2.5	48	1.5	56	104	1	SAE 8	5,700	59	\$355
WCT 2.5X60	2.5	60	1.5	68	128	1	SAE 8	4,200	67	\$399

3" BORE	Cross Tube Welded Double Acting Hydraulic Cylinders 3500 PSI									
SKU	BORE (INCH)	STROKE (INCH)	ROD Ø (INCH)	RETRACTED (INCH)	EXTENDED (INCH)	PIN Ø (INCH)	PORT SIZE	COLUMN LOAD	WEIGHT LBS	LIST PRICE
WCT 3X4	3	4	1.5	12	16	1	SAE 8	21,000	18	\$217
WCT 3X6	3	6	1.5	14	20	1	SAE 8	21,000	20	\$226
WCT 3X8	3	8	1.5	16	24	1	SAE 8	21,000	22	\$235
WCT 3X10	3	10	1.5	18	28	1	SAE 8	21,000	24	\$244
WCT 3X12	3	12	1.5	20	32	1	SAE 8	21,000	26	\$253
WCT 3X14	3	14	1.5	22	36	1	SAE 8	21,000	28	\$263
WCT 3X16	3	16	1.5	24	40	1	SAE 8	21,000	30	\$273
WCT 3X18	3	18	1.5	26	44	1	SAE 8	21,000	32	\$281
WCT 3X20	3	20	1.5	28	48	1	SAE 8	21,000	35	\$288
WCT 3X22	3	22	1.5	30	52	1	SAE 8	20,500	37	\$299
WCT 3X24	3	24	1.5	32	56	1	SAE 8	18,000	40	\$307
WCT 3X26	3	26	1.5	34	60	1	SAE 8	16,000	42	\$317
WCT 3X28	3	28	1.5	36	64	1	SAE 8	14,400	44	\$326
WCT 3X30	3	30	1.5	38	68	1	SAE 8	12,200	46	\$335
WCT 3X32	3	32	1.5	40	72	1	SAE 8	10,900	48	\$344
WCT 3X36	3	36	1.5	44	80	1	SAE 8	8,800	52	\$360
WCT 3X40	3	40	1.5	48	88	1	SAE 8	8,400	57	\$377
WCT 3X42	3	42	1.5	50	92	1	SAE 8	8,400	59	\$390
WCT 3X48	3	48	1.5	56	104	1	SAE 8	6,200	64	\$422

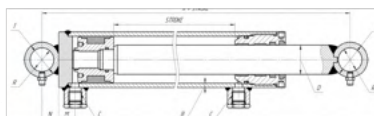
3.5" BORE	Cross Tube Welded Double Acting Hydraulic Cylinders 3500 PSI									
SKU	BORE (INCH)	STROKE (INCH)	ROD Ø (INCH)	RETRACTED (INCH)	EXTENDED (INCH)	PIN Ø (INCH)	PORT SIZE	COLUMN LOAD	WEIGHT LBS	LIST PRICE
WCT 3.5X4	3.5	4	1.75	14	18	1.25	SAE 8	28,800	26	\$245
WCT 3.5X6	3.5	6	1.75	16	22	1.25	SAE 8	28,800	28	\$255
WCT 3.5X8	3.5	8	1.75	18	26	1.25	SAE 8	28,800	31	\$265
WCT 3.5X10	3.5	10	1.75	20	30	1.25	SAE 8	28,800	34	\$280
WCT 3.5X12	3.5	12	1.75	22	34	1.25	SAE 8	28,800	36	\$290
WCT 3.5X14	3.5	14	1.75	24	38	1.25	SAE 8	28,800	38	\$300
WCT 3.5X16	3.5	16	1.75	26	42	1.25	SAE 8	28,800	41	\$310
WCT 3.5X18	3.5	18	1.75	28	46	1.25	SAE 8	28,800	44	\$320
WCT 3.5X20	3.5	20	1.75	30	50	1.25	SAE 8	28,800	46	\$330
WCT 3.5X24	3.5	24	1.75	34	58	1.25	SAE 8	28,800	50	\$350
WCT 3.5X28	3.5	28	1.75	38	66	1.25	SAE 8	23,000	55	\$369
WCT 3.5X30	3.5	30	1.75	40	70	1.25	SAE 8	21,000	60	\$380
WCT 3.5X32	3.5	32	1.75	42	74	1.25	SAE 8	19,000	63	\$389
WCT 3.5X36	3.5	36	1.75	46	82	1.25	SAE 8	15,300	68	\$410



4" BORE	Cross Tube Welded Double Acting Hydraulic Cylinders 3500 PSI									
SKU	BORE (INCH)	STROKE (INCH)	ROD Ø (INCH)	RETRACTED (INCH)	EXTENDED (INCH)	PIN Ø (INCH)	PORT SIZE	COLUMN LOAD	WEIGHT LBS	LIST PRICE
WCT 4X4	4	4	2	14	18	1.5	SAE 8	37,700	35	\$300
WCT 4X6	4	6	2	16	22	1.5	SAE 8	37,700	39	\$310
WCT 4X8	4	8	2	18	26	1.5	SAE 8	37,700	43	\$320
WCT 4X10	4	10	2	20	30	1.5	SAE 8	37,700	47	\$335
WCT 4X12	4	12	2	22	34	1.5	SAE 8	37,700	50	\$349
WCT 4X14	4	14	2	24	38	1.5	SAE 8	37,700	54	\$362
WCT 4X16	4	16	2	26	42	1.5	SAE 8	37,700	58	\$377
WCT 4X18	4	18	2	28	46	1.5	SAE 8	37,700	61	\$390
WCT 4X20	4	20	2	30	50	1.5	SAE 8	37,700	65	\$410
WCT 4X24	4	24	2	34	58	1.5	SAE 8	37,700	73	\$439
WCT 4X28	4	28	2	38	66	1.5	SAE 8	36,700	82	\$464
WCT 4X30	4	30	2	40	70	1.5	SAE 8	35,700	86	\$480
WCT 4X32	4	32	2	42	74	1.5	SAE 8	32,000	90	\$495
WCT 4X36	4	36	2	46	82	1.5	SAE 8	26,000	97	\$520
WCT 4X40	4	40	2	50	90	1.5	SAE 8	21,000	103	\$549
WCT 4X42	4	42	2	52	94	1.5	SAE 8	20,500	108	\$565
WCT 4X48	4	48	2	58	106	1.5	SAE 8	18,000	120	\$630

5" BORE	Cross Tube Welded Double Acting Hydraulic Cylinders 3500 PSI									
SKU	BORE (INCH)	STROKE (INCH)	ROD Ø (INCH)	RETRACTED (INCH)	EXTENDED (INCH)	PIN Ø (INCH)	PORT SIZE	COLUMN LOAD	WEIGHT LBS	LIST PRICE
WCT 5X12	5	12	2.5	23	35	1.5	SAE 12	58,900	88	\$530
WCT 5X16	5	16	2.5	27	43	1.5	SAE 12	58,900	95	\$575
WCT 5X20	5	20	2.5	31	51	1.5	SAE 12	58,900	103	\$606
WCT 5X24	5	24	2.5	35	59	1.5	SAE 12	58,900	113	\$668
WCT 5X30	5	30	2.5	41	71	1.5	SAE 12	58,900	128	\$733
WCT 5X36	5	36	2.5	47	83	1.5	SAE 12	58,900	145	\$810
WCT 5X48*	5	48	2.5	59	107	1.5	SAE 12	37,700	179	\$1,050
*Freight only										

6" BORE	Cross Tube Welded Double Acting Hydraulic Cylinders 3500 PSI									
SKU	BORE (INCH)	STROKE (INCH)	ROD Ø (INCH)	RETRACTED (INCH)	EXTENDED (INCH)	PIN Ø (INCH)	PORT SIZE	COLUMN LOAD	WEIGHT LBS	LIST PRICE
WCT 6X24*	6	24	3	35	59	1.5	SAE 12	83,100	186	\$1,207
WCT 6X28*	6	28	3	39	67	1.5	SAE 12	83,100	231	\$1,290
WCT 6X30*	6	30	3	41	71	1.5	SAE 12	83,100	251	\$1,342
WCT 6X36*	6	36	3	47	83	1.5	SAE 12	83,100	321	\$1,477
*Freight only										



AG CLEVIS **WELDED CYLINDER** **2500 PSI**

SPECIFICATIONS

Type:	Welded Hydraulic Cylinder
Action:	Double Acting
Rod End:	Welded steel clevis item
Base End:	Steel clevis end mount
Bore:	2"-4"
Stroke:	8"-24"
Rod:	Standard chrome plated rod steel 1045
Pressure:	2500 PSI
Color:	Black.



Free Ground
US Shipping

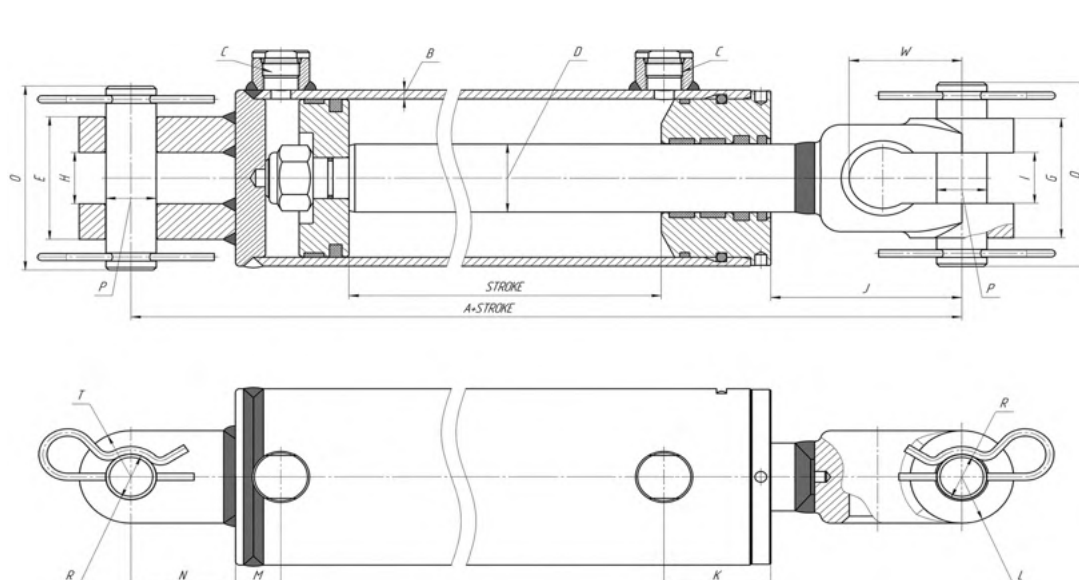


Made in
Europe



2 Year
Warranty





BORE	A	B	C	D	E	G	H	I	J	K	L	M	N	O	P	R	T	W
2"	10.25"	.19"	SAE 8	1.125"	2.08"	2.07"	1.134"	1.12"	3.74"	1.97"	.89"	.9"	2.24"	3.0"	1.0"	1.02"	.98"	2.125"
2.5"	10.25"	.19"	SAE 8	1.125"	2.08"	2.07"	1.134"	1.12"	3.68"	2.05"	.89"	.9"	2.24"	3.0"	1.0"	1.02"	.98"	2.125"
3"	10.25"	.19"	SAE 8	1.25"	2.7"	2.64"	1.134"	1.125"	3.78"	2.0"	1.0"	.9"	2.07"	4.0"	1.0"	1.02"	1.0"	2.24"
3.5"	10.25"	.19"	SAE 8	1.25"/1.5"	2.7"	2.64"	1.134"	1.125"	3.78"	2.0"	1.0"	.9"	2.07"	4.0"	1.0"	1.02"	1.0"	2.24"
4"	10.25"	.19"	SAE 8	1.5"	2.7"	2.64"	1.134"	1.125"	3.58"	2.05"	1.0"	.9"	2.0"	4.0"	1.0"	1.02"	1.18"	2.24"

WBC 2" BORE		AG Clevis End Welded Double Acting Hydraulic Cylinders 2500 PSI								
SKU	BORE (INCH)	STROKE (INCH)	ROD Ø (INCH)	RETRACTED (INCHES)	EXTENDED (INCHES)	PIN Ø (INCH)	PORT SIZE	COLUMN LOAD	WEIGHT LBS	LIST PRICE
WBC 2x8	2	8	1.125	18.25	26.25	1	SAE 8	7,850	15	\$155
WBC 2x8 ASAE	2	8	1.125	20.25	28.25	1	SAE 8	7,850	15	\$155
WBC 2x10	2	10	1.125	20.25	30.25	1	SAE 8	7,850	16	\$164
WBC 2x12	2	12	1.125	22.25	34.25	1	SAE 8	7,850	17	\$169
WBC 2x14	2	14	1.125	24.25	38.25	1	SAE 8	7,850	19	\$175
WBC 2x16	2	16	1.125	26.25	42.25	1	SAE 8	7,850	20	\$181
WBC 2x18	2	18	1.125	28.25	46.25	1	SAE 8	7,850	21	\$187
WBC 2x20	2	20	1.125	30.25	50.25	1	SAE 8	7,850	23	\$193
WBC 2x24	2	24	1.125	34.25	58.25	1	SAE 8	6,950	25	\$199

WBC 2.5" BORE		AG Clevis End Welded Double Acting Hydraulic Cylinders 2500 PSI								
SKU	BORE (INCH)	STROKE (INCH)	ROD Ø (INCH)	RETRACTED (INCHES)	EXTENDED (INCHES)	PIN Ø (INCH)	PORT SIZE	COLUMN LOAD	WEIGHT LBS	LIST PRICE
WBC 2.5x8	2.5	8	1.125	18.25	26.25	1	SAE 8	12,270	18	\$169
WBC 2.5x8 ASAE	2.5	8	1.125	20.25	28.25	1	SAE 8	12,270	18	\$169
WBC 2.5x10	2.5	10	1.125	20.25	30.25	1	SAE 8	12,270	19	\$175
WBC 2.5x12	2.5	12	1.125	22.25	34.25	1	SAE 8	12,270	21	\$181
WBC 2.5x14	2.5	14	1.125	24.25	38.25	1	SAE 8	12,270	22	\$188
WBC 2.5x16	2.5	16	1.125	26.25	42.25	1	SAE 8	10,000	24	\$196
WBC 2.5x18	2.5	18	1.125	28.25	46.25	1	SAE 8	8,370	25	\$204
WBC 2.5x20	2.5	20	1.125	30.25	50.25	1	SAE 8	7,100	27	\$212
WBC 2.5x24	2.5	24	1.125	34.25	58.25	1	SAE 8	5,500	29	\$222

WBC 3" BORE		AG Clevis End Welded Double Acting Hydraulic Cylinders 2500 PSI								
SKU	BORE (INCH)	STROKE (INCH)	ROD Ø (INCH)	RETRACTED (INCHES)	EXTENDED (INCHES)	PIN Ø (INCH)	PORT SIZE	COLUMN LOAD	WEIGHT LBS	LIST PRICE
WBC 3x8	3	8	1.25	18.25	26.25	1	SAE 8	17,670	24	\$199
WBC 3x8 ASAE	3	8	1.25	20.25	28.25	1	SAE 8	17,670	25	\$199
WBC 3x10	3	10	1.25	20.25	30.25	1	SAE 8	17,670	26	\$208
WBC 3x12	3	12	1.25	22.25	34.25	1	SAE 8	17,670	28	\$216
WBC 3x14	3	14	1.25	24.25	38.25	1	SAE 8	17,670	29	\$222
WBC 3x16	3	16	1.25	26.25	42.25	1	SAE 8	17,670	31	\$231
WBC 3x18	3	18	1.25	28.25	46.25	1	SAE 8	12,690	33	\$240
WBC 3x20	3	20	1.25	30.25	50.25	1	SAE 8	10,780	35	\$248
WBC 3x24	3	24	1.25	34.25	58.25	1	SAE 8	8,050	37	\$267

WBC 3.5" BORE		AG Clevis End Welded Double Acting Hydraulic Cylinders 2500 PSI								
SKU	BORE (INCH)	STROKE (INCH)	ROD Ø (INCH)	RETRACTED (INCHES)	EXTENDED (INCHES)	PIN Ø (INCH)	PORT SIZE	COLUMN LOAD	WEIGHT LBS	LIST PRICE
WBC 3.5x8	3.5	8	1.25	18.25	26.25	1	SAE 8	24,000	27	\$228
WBC 3.5x8 ASAE	3.5	8	1.25	20.25	28.25	1	SAE 8	24,000	28	\$228
WBC 3.5x10	3.5	10	1.25	20.25	30.25	1	SAE 8	24,000	29	\$236
WBC 3.5x12	3.5	12	1.25	22.25	34.25	1	SAE 8	24,000	31	\$244
WBC 3.5x14	3.5	14	1.25	24.25	38.25	1	SAE 8	18,700	33	\$252
WBC 3.5x16	3.5	16	1.25	26.25	42.25	1	SAE 8	15,300	35	\$260
WBC 3.5x18	3.5	18	1.25	28.25	46.25	1	SAE 8	12,800	37	\$268
WBC 3.5x20	3.5	20	1.25	30.25	50.25	1	SAE 8	10,900	39	\$278
WBC 3.5x24	3.5	24	1.5	34.25	58.25	1	SAE 8	16,600	46	\$310

WBC 4" BORE		AG Clevis End Welded Double Acting Hydraulic Cylinders 2500 PSI								
SKU	BORE (INCH)	STROKE (INCH)	ROD Ø (INCH)	RETRACTED (INCHES)	EXTENDED (INCHES)	PIN Ø (INCH)	PORT SIZE	COLUMN LOAD	WEIGHT LBS	LIST PRICE
WBC 4x8	4	8	1.5	18.25	26.25	1	SAE 8	31,400	37	\$265
WBC 4x8 ASAE	4	8	1.5	20.25	28.25	1	SAE 8	31,400	38	\$265
WBC 4x10	4	10	1.5	20.25	30.25	1	SAE 8	31,400	39	\$280
WBC 4x12	4	12	1.5	22.25	34.25	1	SAE 8	31,400	42	\$295
WBC 4x14	4	14	1.5	24.25	38.25	1	SAE 8	31,400	45	\$307
WBC 4x16	4	16	1.5	26.25	42.25	1	SAE 8	28,200	48	\$319
WBC 4x18	4	18	1.5	28.25	46.25	1	SAE 8	25,300	50	\$333
WBC 4x20	4	20	1.5	30.25	50.25	1	SAE 8	22,600	52	\$346
WBC 4x24	4	24	1.5	34.25	58.25	1	SAE 8	16,800	59	\$368



CLEVIS END WELDED CYLINDER 3500 PSI

SPECIFICATIONS

Type:	Welded Hydraulic Cylinder
Action:	Double Acting
Rod End:	Screw-on ductile iron clevis item
Base End:	Welded steel clevis item
Bore:	2"-4"
Stroke:	4"-36"
Rod:	Standard chrome plated rod steel 1045
Pressure:	3500 PSI
Color:	Black



Free Ground
US Shipping

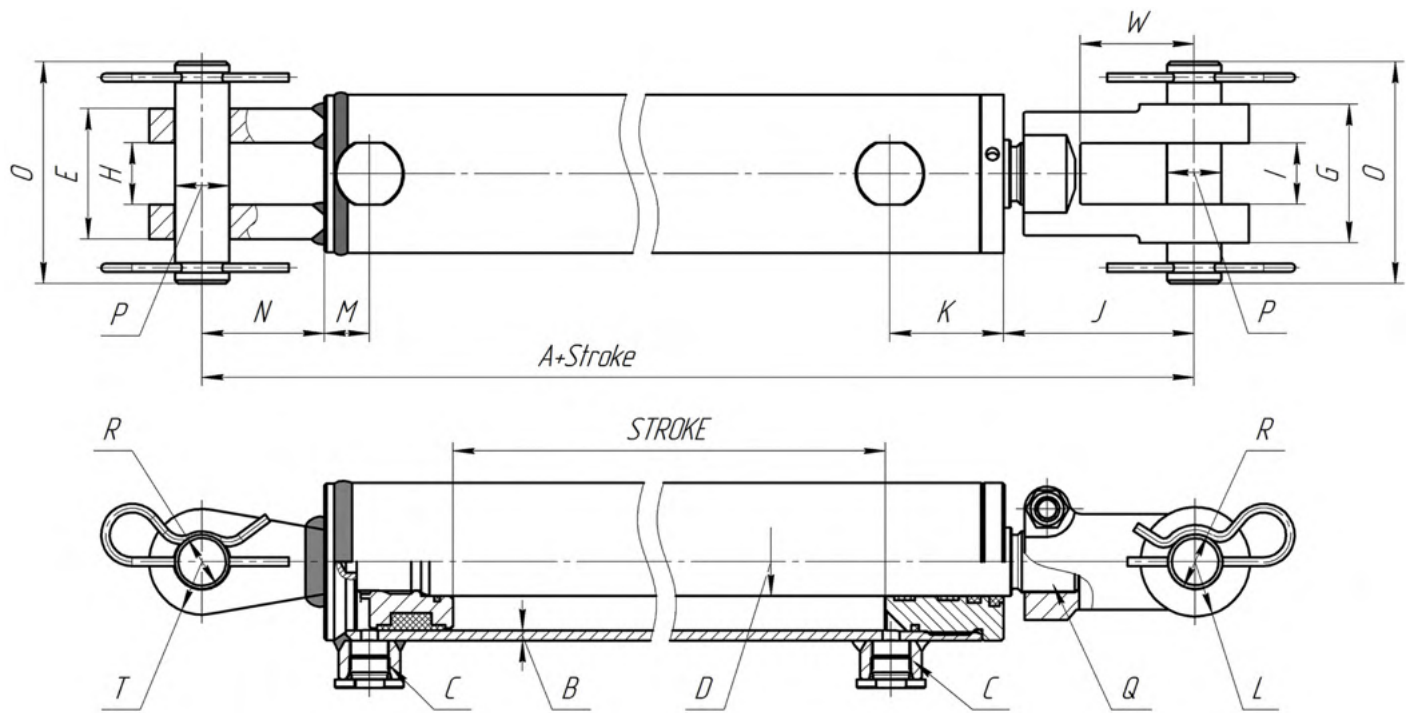


Made in
Europe



2 Year
Warranty



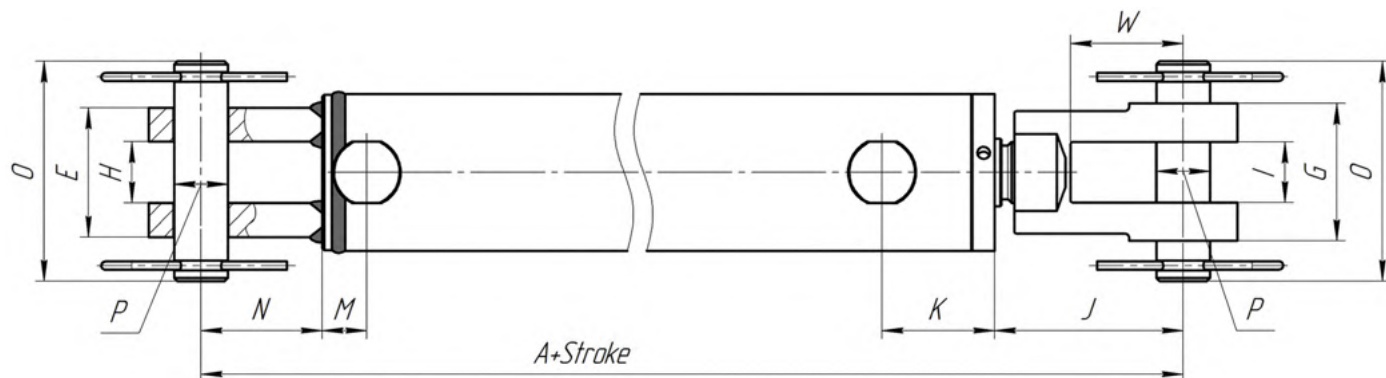


BORE	A	B	C	D	E	G	H	I	J	K	L	M	N	T	O	P	R	Q	W
2"	10.25"	.19"	SAE 8	1.25"	2.4"	2.54"	1.125"	1.13"	3.48"	2.05"	1.0"	.83"	2.24"	1.0"	4.0"	1.0"	1.015"	1 1/8-12 UNF	2.125"
2.5"	10.25"	.19"	SAE 8	1.25"	2.4"	2.54"	1.125"	1.13"	3.48"	2.05"	1.0"	.83"	2.24"	1.0"	4.0"	1.0"	1.015"	1 1/8-12 UNF	2.125"
3"	10.25"	.19"	SAE 8	1.5"	2.7"	2.64"	1.13"	1.13"	3.46"	2.13"	1.13"	.85"	2.07"	1.02"	4.0"	1.0"	1.015"	1 1/4-12 UNF	2.125"
3.5"	10.25"	.19"	SAE 8	1.75"	2.7"	2.64"	1.13"	1.13"	3.46"	2.13"	1.13"	.85"	2.07"	1.02"	4.0"	1.0"	1.015"	1 1/4-12 UNF	2.125"
4"	10.25"	.25"	SAE 8	2.0"	2.7"	2.64"	1.13"	1.13"	3.52"	2.13"	1.13"	.85"	2.0"	1.18"	4.0"	1.0"	1.015"	1 1/4-12 UNF	2.125"

2" BORE		Clevis End Welded Double Acting Hydraulic Cylinders 3500 PSI								
SKU	BORE (INCH)	STROKE (INCH)	ROD Ø (INCH)	RETRACTED (INCHES)	EXTENDED (INCHES)	PIN Ø (INCH)	PORT SIZE	COLUMN LOAD	WEIGHT LBS	LIST PRICE
WCL 2x4	2	4	1.25	14.25	18.25	1	SAE 8	9,400	16	\$172
WCL 2x6	2	6	1.25	16.25	22.25	1	SAE 8	9,400	17	\$178
WCL 2x8	2	8	1.25	18.25	26.25	1	SAE 8	9,400	19	\$185
WCL 2x8 ASAE	2	8	1.25	20.25	28.25	1	SAE 8	9,400	19	\$185
WCL 2x10	2	10	1.25	20.25	30.25	1	SAE 8	9,400	19	\$192
WCL 2x12	2	12	1.25	22.25	34.25	1	SAE 8	9,400	21	\$199
WCL 2x14	2	14	1.25	24.25	38.25	1	SAE 8	9,400	23	\$209
WCL 2x16	2	16	1.25	26.25	42.25	1	SAE 8	9,400	25	\$213
WCL 2x18	2	18	1.25	28.25	46.25	1	SAE 8	9,400	25	\$217
WCL 2x20	2	20	1.25	30.25	50.25	1	SAE 8	9,400	26	\$225
WCL 2x24	2	24	1.25	34.25	58.25	1	SAE 8	7,700	30	\$235
WCL 2x30	2	30	1.25	40.25	70.25	1	SAE 8	5,300	34	\$255
WCL 2x36	2	36	1.25	46.25	82.25	1	SAE 8	3,900	39	\$275

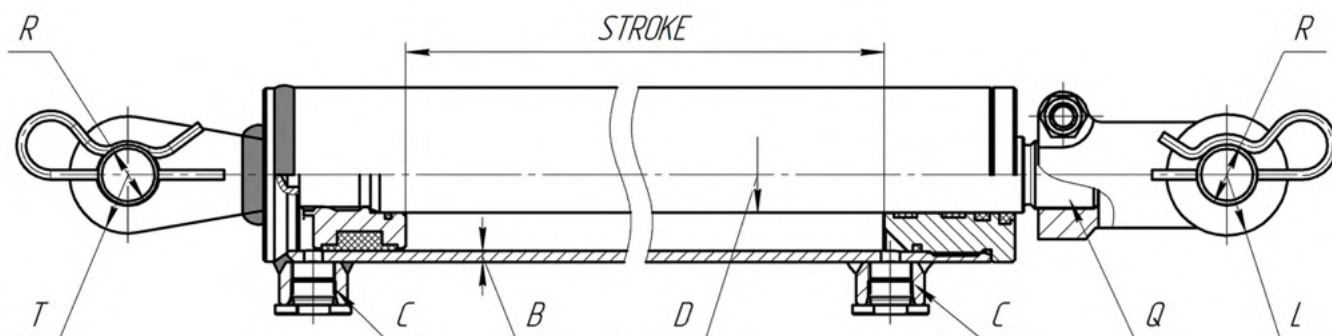
2.5" BORE	Clevis End Welded Double Acting Hydraulic Cylinders 3500 PSI									
SKU	BORE (INCH)	STROKE (INCH)	ROD Ø (INCH)	RETRACTED (INCHES)	EXTENDED (INCHES)	PIN Ø (INCH)	PORT SIZE	COLUMN LOAD	WEIGHT LBS	LIST PRICE
WCL 2.5x4	2.5	4	1.25	14.25	18.25	1	SAE 8	14,700	18	\$188
WCL 2.5x6	2.5	6	1.25	16.25	22.25	1	SAE 8	14,700	19	\$194
WCL 2.5x8	2.5	8	1.25	18.25	26.25	1	SAE 8	14,700	22	\$199
WCL 2.5x8 ASAE	2.5	8	1.25	20.25	28.25	1	SAE 8	14,700	22	\$199
WCL 2.5x10	2.5	10	1.25	20.25	30.25	1	SAE 8	14,700	23	\$208
WCL 2.5x12	2.5	12	1.25	22.25	34.25	1	SAE 8	14,700	24	\$216
WCL 2.5x14	2.5	14	1.25	24.25	38.25	1	SAE 8	14,700	25	\$223
WCL 2.5x16	2.5	16	1.25	26.25	42.25	1	SAE 8	14,700	27	\$230
WCL 2.5x18	2.5	18	1.25	28.25	46.25	1	SAE 8	14,700	30	\$237
WCL 2.5x20	2.5	20	1.25	30.25	50.25	1	SAE 8	10,600	31	\$244
WCL 2.5x24	2.5	24	1.25	34.25	58.25	1	SAE 8	7,900	33	\$258
WCL 2.5x30	2.5	30	1.25	40.25	70.25	1	SAE 8	5,400	38	\$277
WCL 2.5x36	2.5	36	1.25	46.25	82.25	1	SAE 8	4,000	44	\$294

3" BORE	Clevis End Welded Double Acting Hydraulic Cylinders 3500 PSI									
SKU	BORE (INCH)	STROKE (INCH)	ROD Ø (INCH)	RETRACTED (INCHES)	EXTENDED (INCHES)	PIN Ø (INCH)	PORT SIZE	COLUMN LOAD	WEIGHT LBS	LIST PRICE
WCL 3x4	3	4	1.5	14.25	18.25	1	SAE 8	21,200	24	\$229
WCL 3x6	3	6	1.5	16.25	22.25	1	SAE 8	21,200	25	\$239
WCL 3x8	3	8	1.5	18.25	26.25	1	SAE 8	21,200	27	\$249
WCL 3x8 ASAE	3	8	1.5	20.25	28.25	1	SAE 8	21,200	29	\$249
WCL 3x10	3	10	1.5	20.25	30.25	1	SAE 8	21,200	30	\$258
WCL 3x12	3	12	1.5	22.25	34.25	1	SAE 8	21,200	32	\$268
WCL 3x14	3	14	1.5	24.25	38.25	1	SAE 8	21,200	34	\$276
WCL 3x16	3	16	1.5	26.25	42.25	1	SAE 8	21,200	35	\$286
WCL 3x18	3	18	1.5	28.25	46.25	1	SAE 8	21,200	37	\$294
WCL 3x20	3	20	1.5	30.25	50.25	1	SAE 8	21,200	40	\$302
WCL 3x24	3	24	1.5	34.25	58.25	1	SAE 8	16,400	43	\$319
WCL 3x30	3	30	1.5	40.25	70.25	1	SAE 8	11,300	50	\$342
WCL 3x36	3	36	1.5	46.25	82.25	1	SAE 8	8,200	55	\$369



3.5" BORE	Clevis End Welded Double Acting Hydraulic Cylinders 3500 PSI									
SKU	BORE (INCH)	STROKE (INCH)	ROD Ø (INCH)	RETRACTED (INCHES)	EXTENDED (INCHES)	PIN Ø (INCH)	PORT SIZE	COLUMN LOAD	WEIGHT LBS	LIST PRICE
WCL 3.5x4	3.5	4	1.75	14.25	18.25	1	SAE 8	28,800	29	\$250
WCL 3.5x6	3.5	6	1.75	16.25	22.25	1	SAE 8	28,800	31	\$260
WCL 3.5x8	3.5	8	1.75	18.25	26.25	1	SAE 8	28,800	33	\$270
WCL 3.5x8 ASAE	3.5	8	1.75	20.25	28.25	1	SAE 8	28,800	34	\$270
WCL 3.5x10	3.5	10	1.75	20.25	30.25	1	SAE 8	28,800	36	\$279
WCL 3.5x12	3.5	12	1.75	22.25	34.25	1	SAE 8	28,800	39	\$289
WCL 3.5x14	3.5	14	1.75	24.25	38.25	1	SAE 8	28,800	41	\$305
WCL 3.5x16	3.5	16	1.75	26.25	42.25	1	SAE 8	28,800	44	\$315
WCL 3.5x18	3.5	18	1.75	28.25	46.25	1	SAE 8	28,800	47	\$327
WCL 3.5x20	3.5	20	1.75	30.25	50.25	1	SAE 8	28,800	50	\$337
WCL 3.5x24	3.5	24	1.75	34.25	58.25	1	SAE 8	26,000	53	\$355
WCL 3.5x30	3.5	30	1.75	40.25	70.25	1	SAE 8	20,000	61	\$385
WCL 3.5x36	3.5	36	1.75	46.25	82.25	1	SAE 8	15,000	70	\$415

4" BORE	Clevis End Welded Double Acting Hydraulic Cylinders 3500 PSI									
SKU	BORE (INCH)	STROKE (INCH)	ROD Ø (INCH)	RETRACTED (INCHES)	EXTENDED (INCHES)	PIN Ø (INCH)	PORT SIZE	COLUMN LOAD	WEIGHT LBS	LIST PRICE
WCL 4x4	4	4	2	14.25	18.25	1	SAE 8	37,000	36	\$300
WCL 4x6	4	6	2	16.25	22.25	1	SAE 8	37,000	39	\$310
WCL 4x8	4	8	2	18.25	26.25	1	SAE 8	37,000	44	\$320
WCL 4x8 ASAE	4	8	2	20.25	28.25	1	SAE 8	37,000	45	\$320
WCL 4x10	4	10	2	20.25	30.25	1	SAE 8	37,000	47	\$330
WCL 4x12	4	12	2	22.25	34.25	1	SAE 8	37,000	50	\$342
WCL 4x14	4	14	2	24.25	38.25	1	SAE 8	37,000	54	\$355
WCL 4x16	4	16	2	26.25	42.25	1	SAE 8	37,000	57	\$368
WCL 4x18	4	18	2	28.25	46.25	1	SAE 8	37,000	61	\$379
WCL 4x20	4	20	2	30.25	50.25	1	SAE 8	37,000	65	\$399
WCL 4x24	4	24	2	34.25	58.25	1	SAE 8	36,000	73	\$424
WCL 4x30	4	30	2	40.25	70.25	1	SAE 8	33,000	83	\$467
WCL 4x32	4	32	2	42.25	74.25	1	SAE 8	31,000	87	\$479
WCL 4x36	4	36	2	46.25	82.25	1	SAE 8	26,000	95	\$509



TIE ROD CLEVIS CYLINDER 2500 PSI

SPECIFICATIONS

Type:	Tie-Rod Hydraulic Cylinder
Action:	Double Acting
Rod End:	Screw-on ductile iron clevis item.
Base End:	Ductile iron clevis end mount.
Bore:	2"-3"
Stroke:	4"-24"
Rod:	Standard chrome plated rod steel 1045
Pressure:	2500 PSI
Color:	Black.



Free Ground
US Shipping

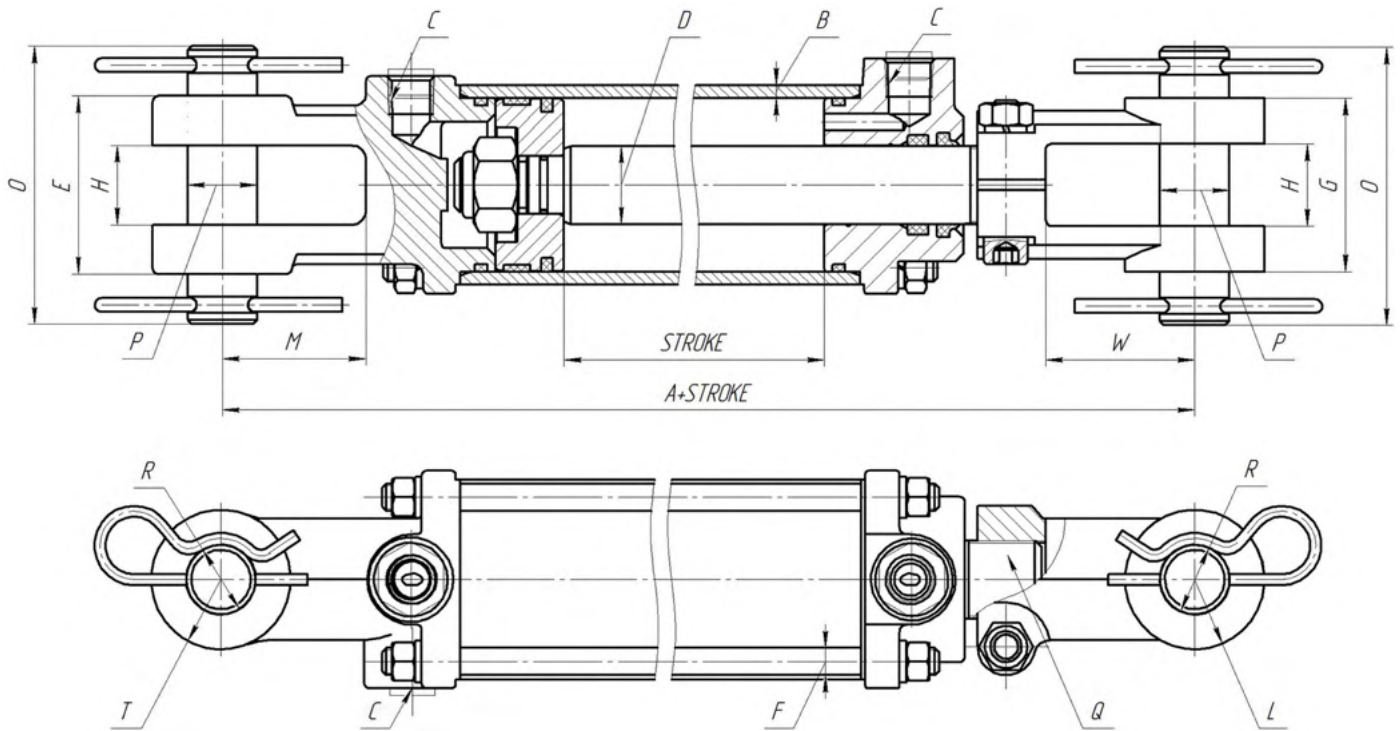


Made in
Europe



2 Year
Warranty





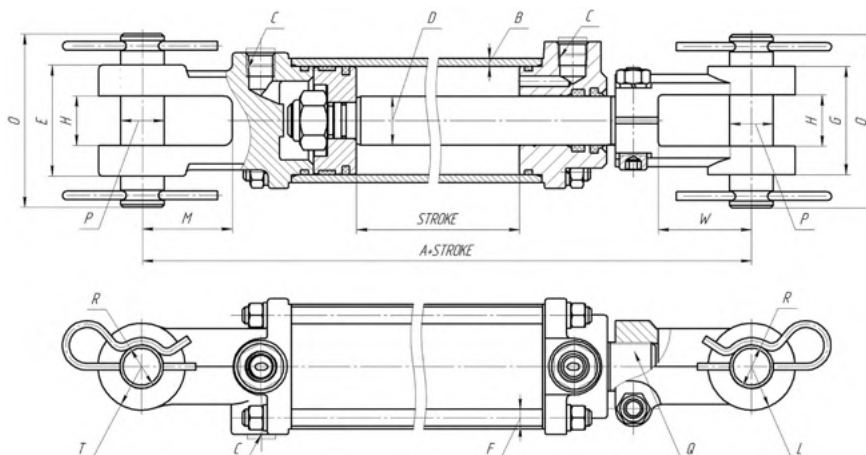
BORE	A	B	C	D	F	E	G	H	L	M	P	R	T	Q	O	W
2"	10.25"	.188"	3/8" NPT	1.125"	.35"	2.38"	2.54"	1.125"	1.0"	2.05"	1.0"	1.015"	1.0"	1 1/8-12 UNF	4"	2.125"
2.5"	10.25"	.188"	3/8" NPT	1.125"	.39"	2.56"	2.54"	1.125"	1.0"	2.05"	1.0"	1.015"	1.0"	1 1/8-12 UNF	4"	2.125"
3.0"	10.25"	.188"	1/2" NPT	1.25"	.42"	2.6"	2.64"	1.13"	1.13"	2.05"	1.0"	1.015"	1.0"	1 1/4-12 UNF	4"	2.125"

2" Bore	Tie-Rod Double Acting Hydraulic Cylinders 2500 PSI - OD 2.38"									
SKU	BORE (INCH)	STROKE (INCH)	ROD Ø (INCH)	RETRACTED (INCHES)	EXTENDED (INCHES)	PIN Ø (INCH)	PORT SIZE	COLUMN LOAD LBS	WEIGHT LBS	LIST PRICE
TRC 2x4	2	4	1.125	14.25	18.25	1	3/8" NPT	7,850	15	\$122
TRC 2x6	2	6	1.125	16.25	22.25	1	3/8" NPT	7,850	17	\$129
TRC 2x8	2	8	1.125	18.25	26.25	1	3/8" NPT	7,850	18	\$134
TRC 2x8 ASAE	2	8	1.125	20.25	28.25	1	3/8" NPT	7,850	19	\$134
TRC 2x10	2	10	1.125	20.25	30.25	1	3/8" NPT	7,850	20	\$140
TRC 2x12	2	12	1.125	22.25	34.25	1	3/8" NPT	7,850	22	\$148
TRC 2x14	2	14	1.125	24.25	38.25	1	3/8" NPT	7,850	23	\$154
TRC 2x16	2	16	1.125	26.25	42.25	1	3/8" NPT	7,850	25	\$160
TRC 2x18	2	18	1.125	28.25	46.25	1	3/8" NPT	7,850	27	\$165
TRC 2x20	2	20	1.125	30.25	50.25	1	3/8" NPT	7,850	28	\$173
TRC 2x24	2	24	1.125	34.25	58.25	1	3/8" NPT	6,950	31	\$186



2.5" Bore	Tie-Rod Double Acting Hydraulic Cylinders 2500 PSI - OD 2.876"									
SKU	BORE (INCH)	STROKE (INCH)	ROD Ø (INCH)	RETRACTED (INCHES)	EXTENDED (INCHES)	PIN Ø (INCH)	PORT SIZE	COLUMN LOAD LBS	WEIGHT LBS	LIST PRICE
TRC 2.5x4	2.5	4	1.125	14.25	18.25	1	3/8" NPT	12,270	18	\$137
TRC 2.5x6	2.5	6	1.125	16.25	22.25	1	3/8" NPT	12,270	19	\$144
TRC 2.5x8	2.5	8	1.125	18.25	26.25	1	3/8" NPT	12,270	21	\$150
TRC 2.5x8 ASAE	2.5	8	1.125	20.25	28.25	1	3/8" NPT	12,270	22	\$150
TRC 2.5x10	2.5	10	1.125	20.25	30.25	1	3/8" NPT	12,270	23	\$157
TRC 2.5x12	2.5	12	1.125	22.25	34.25	1	3/8" NPT	12,270	25	\$166
TRC 2.5x14	2.5	14	1.125	24.25	38.25	1	3/8" NPT	12,270	26	\$172
TRC 2.5x16	2.5	16	1.125	26.25	42.25	1	3/8" NPT	10,000	28	\$180
TRC 2.5x18	2.5	18	1.125	28.25	46.25	1	3/8" NPT	8,370	30	\$187
TRC 2.5x20	2.5	20	1.125	30.25	50.25	1	3/8" NPT	7,100	32	\$195
TRC 2.5x24	2.5	24	1.125	34.25	58.25	1	3/8" NPT	5,500	35	\$209

3" Bore	Tie-Rod Double Acting Hydraulic Cylinders 2500 PSI - OD 3.38"									
SKU	BORE (INCH)	STROKE (INCH)	ROD Ø (INCH)	RETRACTED (INCHES)	EXTENDED (INCHES)	PIN Ø (INCH)	PORT SIZE	COLUMN LOAD LBS	WEIGHT LBS	LIST PRICE
TRC 3x4	3	4	1.25	14.25	18.25	1	1/2" NPT	17,670	24	\$165
TRC 3x6	3	6	1.25	16.25	22.25	1	1/2" NPT	17,670	26	\$172
TRC 3x8	3	8	1.25	18.25	26.25	1	1/2" NPT	17,670	29	\$183
TRC 3x8 ASAE	3	8	1.25	20.25	28.25	1	1/2" NPT	17,670	29	\$183
TRC 3x10	3	10	1.25	20.25	30.25	1	1/2" NPT	17,670	30	\$191
TRC 3x12	3	12	1.25	22.25	34.25	1	1/2" NPT	17,670	33	\$198
TRC 3x14	3	14	1.25	24.25	38.25	1	1/2" NPT	17,670	35	\$207
TRC 3x16	3	16	1.25	26.25	42.25	1	1/2" NPT	17,670	37	\$216
TRC 3x18	3	18	1.25	28.25	46.25	1	1/2" NPT	12,690	39	\$224
TRC 3x20	3	20	1.25	30.25	50.25	1	1/2" NPT	10,780	42	\$234
TRC 3x24	3	24	1.25	34.25	58.25	1	1/2" NPT	8,050	45	\$251



PIN EYE WELDED CYLINDER 3500 PSI

SPECIFICATIONS

Type:	Welded Hydraulic Cylinder
Action:	Double Acting
Rod End:	Through-hole for pin attachment
Base End:	High tensile steel tube
Bore:	2"-4"
Stroke:	8"-36"
Rod:	Standard chrome plated rod steel 1045
Pressure:	3500 PSI
Color:	Black.



Free Ground
US Shipping

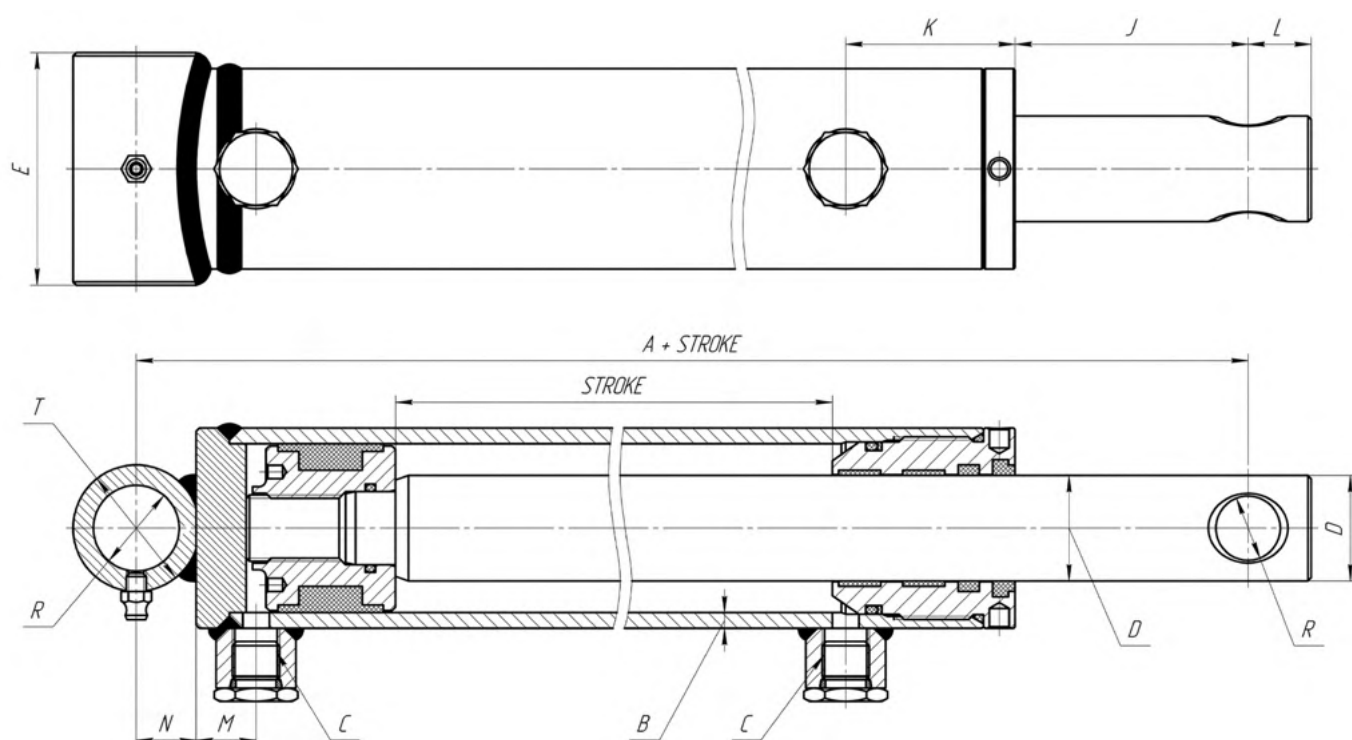


Made in
Europe



2 Year
Warranty





BORE	A	B	C	D	E	J		K	L	M	N	R	T
						Stroke 4...20	Stroke 24...36						
2.0"	8.0"	.19"	SAE 8	1.25"	2.5"	2.84"	2.05"	2.05"	.75"	.83"	.63"	.76"	1.25"
2.5"	8.0"	.19"	SAE 8	1.5"	3.0"	2.84"	2.05"	2.05"	.75"	.83"	.63"	.76"	1.25"
3.0"	8.0"	.19"	SAE 8	1.5"	3.5"	2.52"	1.73"	2.13"	1.0"	.85"	.75"	1.015"	1.5"
3.5"	8.0"	.19"	SAE 8	1.75"	4.0"	2.52"	1.54"	2.13"	.98"	.85"	.75"	1.015"	1.5"
4.0"	9.0"	.25"	SAE 8	2.0"	4.63"	2.86"	1.87"	2.48"	1.26"	.85"	1.02"	1.26"	2.05"

2" BORE	Pin Eye Welded Double Acting Hydraulic Cylinders 3500 PSI									
SKU	BORE (INCH)	STROKE (INCH)	ROD Ø (INCH)	RETRACTED (INCHES)	EXTENDED (INCHES)	PIN Ø (INCH)	PORT SIZE	COLUMN LOAD	WEIGHT LBS	LIST PRICE
WPE 2x8	2	8	1.25	16	24	0.75	SAE 8	9,400	13	\$173
WPE 2x10	2	10	1.25	18	28	0.75	SAE 8	9,400	15	\$180
WPE 2x12	2	12	1.25	20	32	0.75	SAE 8	9,400	16	\$187
WPE 2x16	2	16	1.25	24	40	0.75	SAE 8	9,400	19	\$200
WPE 2x20	2	20	1.25	28	48	0.75	SAE 8	9,400	22	\$216
WPE 2x24	2	24	1.25	32	56	0.75	SAE 8	8,100	25	\$232
WPE 2x30	2	30	1.25	38	68	0.75	SAE 8	5,600	30	\$250
WPE 2x36	2	36	1.25	44	80	0.75	SAE 8	4,100	34	\$270



2.5" BORE	Pin Eye Welded Double Acting Hydraulic Cylinders 3500 PSI									
SKU	BORE (INCH)	STROKE (INCH)	ROD Ø (INCH)	RETRACTED (INCHES)	EXTENDED (INCHES)	PIN Ø (INCH)	PORT SIZE	COLUMN LOAD	WEIGHT LBS	LIST PRICE
WPE 2.5x8	2.5	8	1.5	16	24	0.75	SAE 8	14,700	18	\$196
WPE 2.5x10	2.5	10	1.5	18	28	0.75	SAE 8	14,700	20	\$204
WPE 2.5x12	2.5	12	1.5	20	32	0.75	SAE 8	14,700	22	\$212
WPE 2.5x16	2.5	16	1.5	24	40	0.75	SAE 8	14,700	25	\$228
WPE 2.5x20	2.5	20	1.5	28	48	0.75	SAE 8	14,700	30	\$244
WPE 2.5x24	2.5	24	1.5	32	56	0.75	SAE 8	14,700	34	\$259
WPE 2.5x30	2.5	30	1.5	38	68	0.75	SAE 8	8,400	40	\$281
WPE 2.5x36	2.5	36	1.5	44	80	0.75	SAE 8	6,100	46	\$299

3" BORE	Pin Eye Welded Double Acting Hydraulic Cylinders 3500 PSI									
SKU	BORE (INCH)	STROKE (INCH)	ROD Ø (INCH)	RETRACTED (INCHES)	EXTENDED (INCHES)	PIN Ø (INCH)	PORT SIZE	COLUMN LOAD	WEIGHT LBS	LIST PRICE
WPE 3x8	3	8	1.5	16	24	1	SAE 8	21,200	22	\$223
WPE 3x10	3	10	1.5	18	28	1	SAE 8	21,200	24	\$233
WPE 3x12	3	12	1.5	20	32	1	SAE 8	21,200	26	\$241
WPE 3x16	3	16	1.5	24	40	1	SAE 8	21,200	30	\$266
WPE 3x20	3	20	1.5	28	48	1	SAE 8	21,200	35	\$282
WPE 3x24	3	24	1.5	32	56	1	SAE 8	17,800	40	\$298
WPE 3x30	3	30	1.5	38	68	1	SAE 8	12,100	45	\$320
WPE 3x36	3	36	1.5	44	80	1	SAE 8	8,800	50	\$349

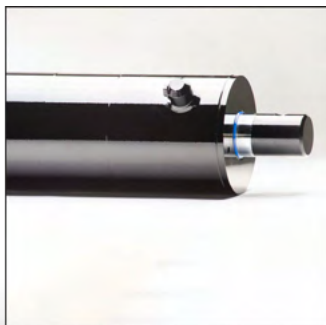
3.5" BORE	Pin Eye Welded Double Acting Hydraulic Cylinders 3500 PSI									
SKU	BORE (INCH)	STROKE (INCH)	ROD Ø (INCH)	RETRACTED (INCHES)	EXTENDED (INCHES)	PIN Ø (INCH)	PORT SIZE	COLUMN LOAD	WEIGHT LBS	LIST PRICE
WPE 3.5x8	3.5	8	1.75	16	24	1	SAE 8	28,800	28	\$257
WPE 3.5x10	3.5	10	1.75	18	28	1	SAE 8	28,800	30	\$267
WPE 3.5x12	3.5	12	1.75	20	32	1	SAE 8	28,800	33	\$280
WPE 3.5x16	3.5	16	1.75	24	40	1	SAE 8	28,800	38	\$305
WPE 3.5x20	3.5	20	1.75	28	48	1	SAE 8	28,800	43	\$325
WPE 3.5x24	3.5	24	1.75	32	56	1	SAE 8	28,800	49	\$347
WPE 3.5x30	3.5	30	1.75	38	68	1	SAE 8	22,300	59	\$379
WPE 3.5x36	3.5	36	1.75	44	80	1	SAE 8	16,100	66	\$409

4" BORE	Pin Eye Welded Double Acting Hydraulic Cylinders 3500 PSI									
SKU	BORE (INCH)	STROKE (INCH)	ROD Ø (INCH)	RETRACTED (INCHES)	EXTENDED (INCHES)	PIN Ø (INCH)	PORT SIZE	COLUMN LOAD	WEIGHT LBS	LIST PRICE
WPE 4x8	4	8	2	17	25	1.25	SAE 8	37,700	41	\$320
WPE 4x10	4	10	2	19	29	1.25	SAE 8	37,700	45	\$333
WPE 4x12	4	12	2	21	33	1.25	SAE 8	37,700	49	\$345
WPE 4x16	4	16	2	25	41	1.25	SAE 8	37,700	56	\$365
WPE 4x20	4	20	2	29	49	1.25	SAE 8	37,700	64	\$389
WPE 4x24	4	24	2	33	57	1.25	SAE 8	37,700	73	\$409
WPE 4x30	4	30	2	39	69	1.25	SAE 8	32,000	85	\$459
WPE 4x36	4	36	2	45	81	1.25	SAE 8	27,400	93	\$499

TRAILER HOIST WELDED CYLINDER 3500 PSI

SPECIFICATIONS

Type:	Welded Hydraulic Cylinder
Action:	Double Acting
Rod End:	A heavy-duty rod with a through-hole for pin attachment
Base End:	The mounting flange is a one solid machined piece
Bore:	5"
Stroke:	15.75", 20", 21.5"
Rod:	Standard chrome plated rod steel 1045
Pressure:	3500 PSI
Color:	Black.



Free Ground
US Shipping

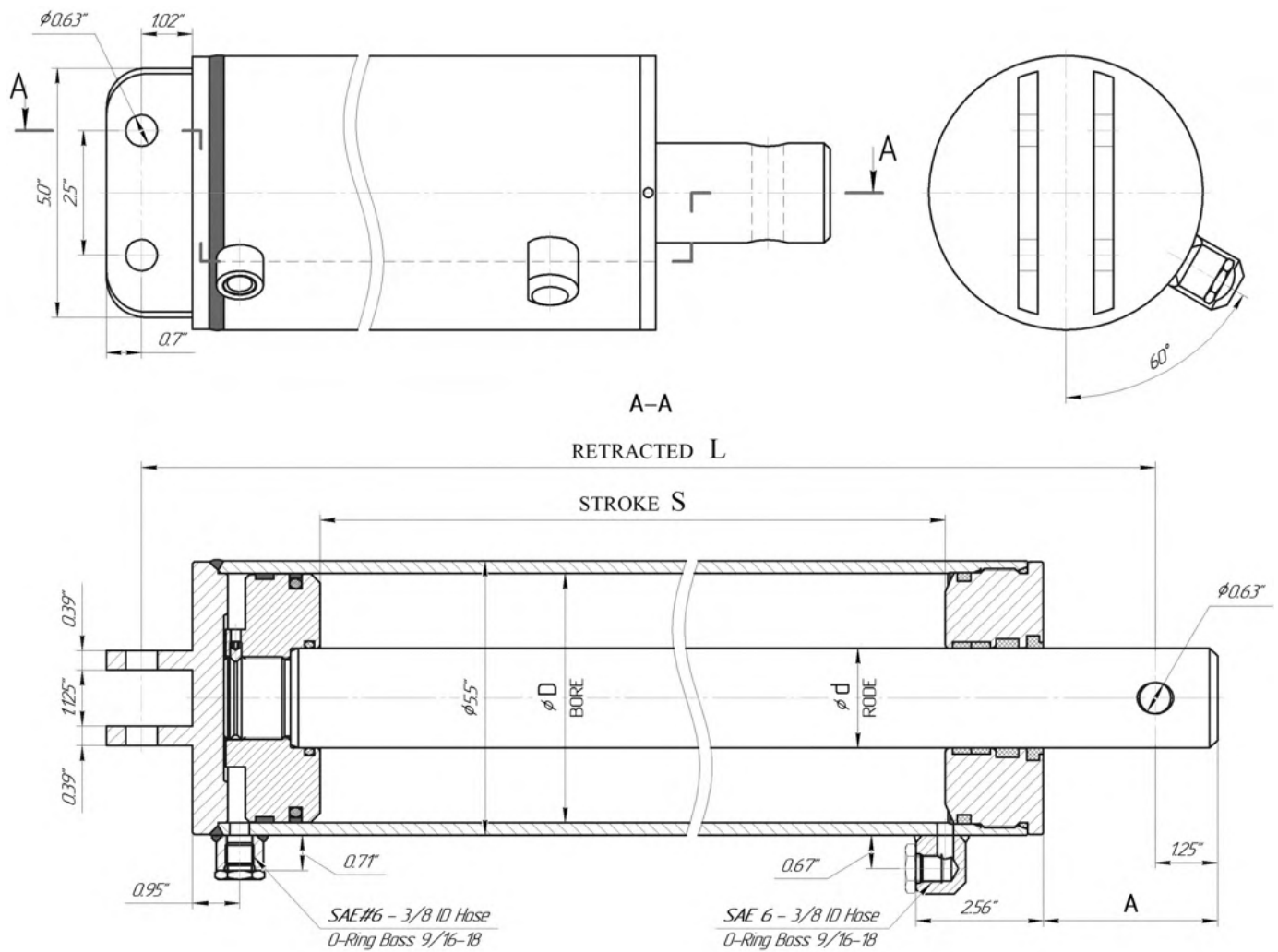


Made in
Europe



2 Year
Warranty





5" BORE	Trailer Hoist Welded Double Acting Hydraulic Cylinders 3500 PSI											
SKU	BORE ϕD (INCH)	STROKE S (INCH)	ROD ϕd (INCH)	RETRACTED L (INCH)	EXTENDED (INCH)	A (INCH)	PIN ϕ (BASE)	PIN ϕ (ROD)	PORT SIZE	COLUMN LOAD	WEIGHT LBS	LIST PRICE
HTC 5X15.75	5	15.75	2	23.5	39.25	3.5	0.63	0.63	SAE 6	57,724	65.3	\$419
HTC 5X20	5	20	2	27.5	47.5	3.2	0.63	0.63	SAE 6	57,724	74	\$439
HTC 5X21.5	5	21.5	2	29.37	50.87	3.57	0.63	0.63	SAE 6	57,724	77.2	\$449



SWIVEL EYE WELDED CYLINDER 3500 PSI

SPECIFICATIONS

Type:	Welded Hydraulic Cylinder
Action:	Double Acting
Rod End:	Spherical bearings, Steel welded ends
Base End:	Welded steel mounts with bearings
Bore:	2" , 2.5"
Stroke:	6" - 24"
Rod:	Standard chrome plated rod steel 1045
Pressure:	3500 PSI
Color:	Black.



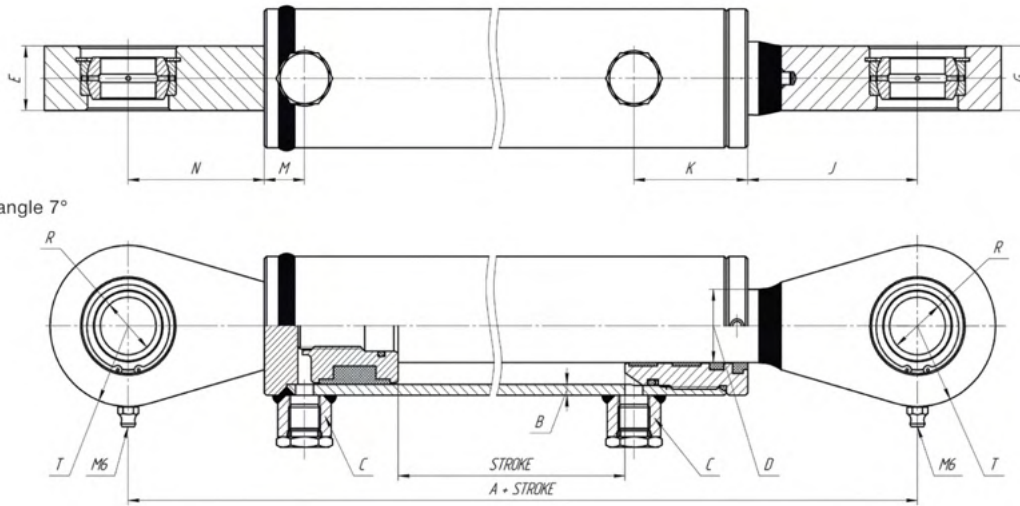
Free Ground
US Shipping



Made in
Europe



2 Year
Warranty



BORE	A	B	C	D	E	G	J	K	M	N	R	T
2.0"	10.0"	.187"	SAE 6	1.25"	1.1"	1.1"	3.07"	2.05"	.83"	2.4"	1.0"	1.48"
2.5"	10.0"	.187"	SAE 8	1.5"	1.1"	1.1"	3.07"	2.05"	.83"	2.4"	1.0"	1.48"

2" BORE		Swivel Eye Welded Double Acting Hydraulic Cylinders 3500 PSI									
SKU	BORE (INCH)	STROKE (INCH)	ROD Ø (INCH)	RETRACTED (INCHES)	EXTENDED (INCHES)	PIN Ø (INCH)	PORT SIZE	COLUMN LOAD	WEIGHT LBS	LIST PRICE	
WSE 2x6	2	6	1.25	16	22	1	SAE 6	9,400	15	\$180	
WSE 2x8	2	8	1.25	18	26	1	SAE 6	9,400	16	\$186	
WSE 2x10	2	10	1.25	20	30	1	SAE 6	9,400	17	\$194	
WSE 2x12	2	12	1.25	22	34	1	SAE 6	9,400	19	\$202	
WSE 2x14	2	14	1.25	24	38	1	SAE 6	9,400	21	\$210	
WSE 2x16	2	16	1.25	26	42	1	SAE 6	9,400	22	\$218	
WSE 2x18	2	18	1.25	28	46	1	SAE 6	9,400	24	\$226	
WSE 2x20	2	20	1.25	30	50	1	SAE 6	9,400	26	\$234	
WSE 2x24	2	24	1.25	34	58	1	SAE 6	8,400	28	\$242	

2.5" BORE		Swivel Eye Welded Double Acting Hydraulic Cylinders 3500 PSI									
SKU	BORE (INCH)	STROKE (INCH)	ROD Ø (INCH)	RETRACTED (INCHES)	EXTENDED (INCHES)	PIN Ø (INCH)	PORT SIZE	COLUMN LOAD	WEIGHT LBS	LIST PRICE	
WSE 2.5x6	2.5	6	1.5	16	22	1	SAE 8	14,700	19	\$207	
WSE 2.5x8	2.5	8	1.5	18	26	1	SAE 8	14,700	21	\$214	
WSE 2.5x10	2.5	10	1.5	20	30	1	SAE 8	14,700	23	\$222	
WSE 2.5x12	2.5	12	1.5	22	34	1	SAE 8	14,700	25	\$231	
WSE 2.5x14	2.5	14	1.5	24	38	1	SAE 8	14,700	27	\$239	
WSE 2.5x16	2.5	16	1.5	26	42	1	SAE 8	14,700	28	\$249	
WSE 2.5x18	2.5	18	1.5	28	46	1	SAE 8	14,700	31	\$259	
WSE 2.5x20	2.5	20	1.5	30	50	1	SAE 8	14,700	33	\$269	
WSE 2.5x24	2.5	24	1.5	34	58	1	SAE 8	12,200	36	\$285	

TANG WELDED CYLINDER 3500 PSI

SPECIFICATIONS

Type:	Welded Hydraulic Cylinder
Action:	Double Acting
Rod End:	Welded narrow tube
Base End:	Welded steel tang mounts
Bore:	1.5"-3"
Stroke:	6"-30"
Rod:	Standard chrome plated rod steel 1045
Pressure:	3500 PSI
Color:	Black



Free Ground
US Shipping

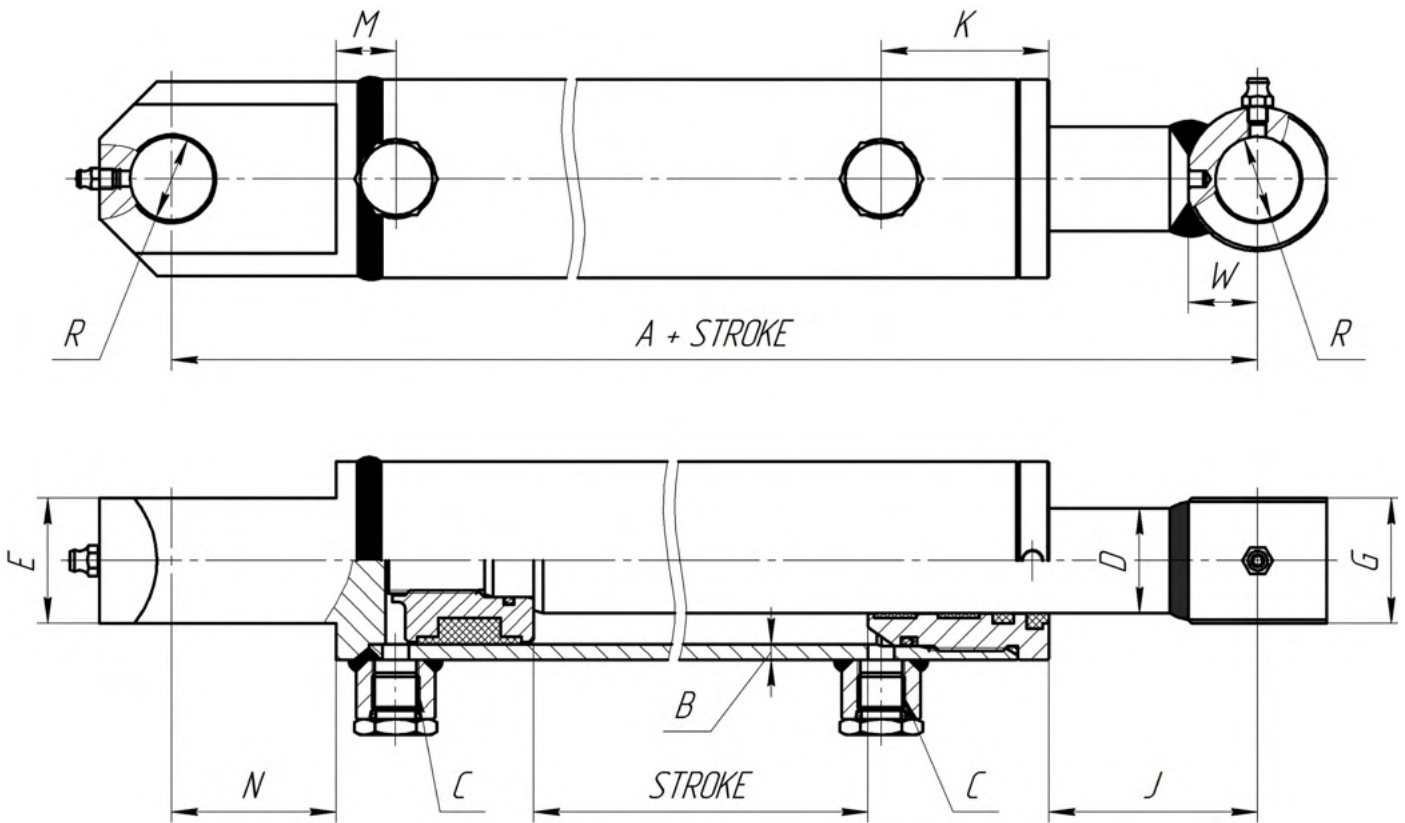


Made in
Europe



2 Year
Warranty





BORE	A	B	C	D	E	G	J	K	M	N	W	R
1.5"	9.0"	.187"	SAE 6	1.0"	1.25"	1.25"	2.81"	2.17"	.83"	1.97"	0.61"	0.76"
2.0"	9.0"	.187"	SAE 6	1.25"	1.5"	1.5"	2.5"	2.05"	.83"	1.97"	0.8"	1.02"
2.5"	9.0"	.187"	SAE 8	1.5"	1.5"	1.5"	2.5"	2.05"	.83"	1.97"	0.8"	1.02"
3.0"	9.0"	.187"	SAE 8	1.5"	1.5"	1.5"	2.3"	2.13"	.83"	1.97"	0.8"	1.02"

1.5" BORE		Tang Welded Double Acting Hydraulic Cylinders 3500 PSI									
SKU	BORE (INCH)	STROKE (INCH)	ROD Ø (INCH)	RETRACTED (INCHES)	EXTENDED (INCHES)	PIN Ø (INCH)	PORT SIZE	COLUMN LOAD	WEIGHT LBS	LIST PRICE	
WTG 1.5x6	1.5	6	1	15	21	0.75	SAE 6	5,300	9	\$149	
WTG 1.5x8	1.5	8	1	17	25	0.75	SAE 6	5,300	10	\$156	
WTG 1.5x10	1.5	10	1	19	29	0.75	SAE 6	5,300	11	\$163	
WTG 1.5x12	1.5	12	1	21	33	0.75	SAE 6	5,300	12	\$169	
WTG 1.5x14	1.5	14	1	23	37	0.75	SAE 6	5,300	13	\$177	
WTG 1.5x16	1.5	16	1	25	41	0.75	SAE 6	5,300	14	\$183	
WTG 1.5x18	1.5	18	1	27	45	0.75	SAE 6	5,300	15	\$189	
WTG 1.5x20	1.5	20	1	29	49	0.75	SAE 6	5,300	16	\$195	
WTG 1.5x22	1.5	22	1	31	53	0.75	SAE 6	4,620	17	\$199	
WTG 1.5x24	1.5	24	1	33	57	0.75	SAE 6	4,210	19	\$205	

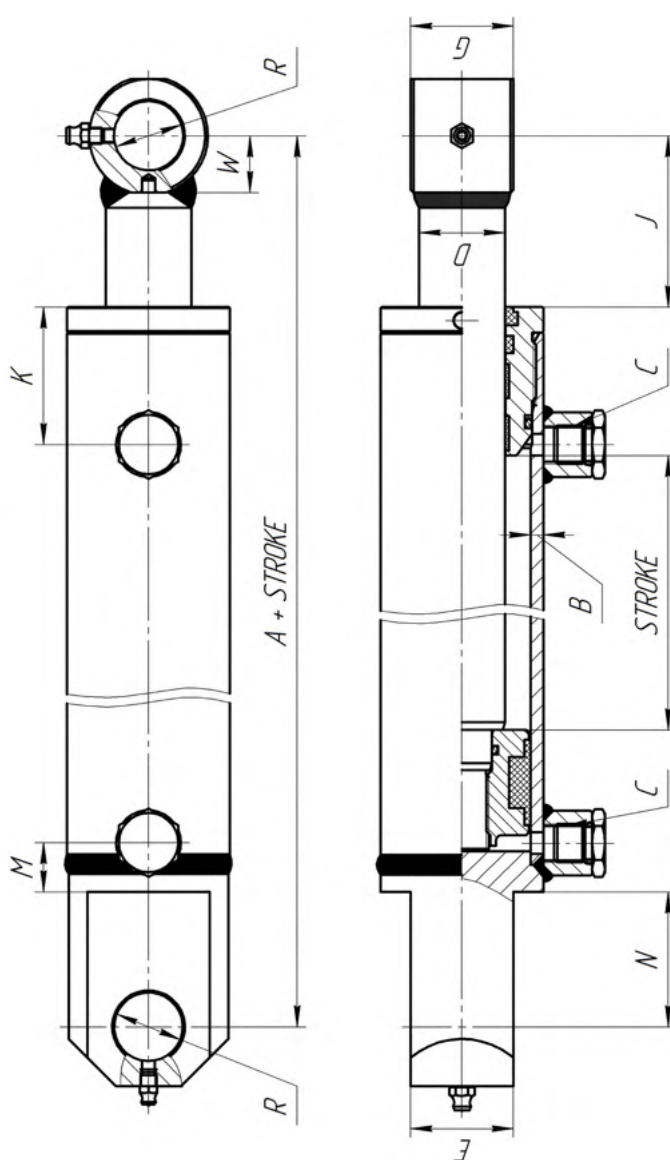




2" BORE	Tang Welded Double Acting Hydraulic Cylinders 3500 PSI									
SKU	BORE (INCH)	STROKE (INCH)	ROD Ø (INCH)	RETRACTED (INCHES)	EXTENDED (INCHES)	PIN Ø (INCH)	PORT SIZE	COLUMN LOAD	WEIGHT LBS	LIST PRICE
WTG 2x6	2	6	1.25	15	21	1	SAE 6	9,400	13	\$175
WTG 2x8	2	8	1.25	17	25	1	SAE 6	9,400	14	\$182
WTG 2x10	2	10	1.25	19	29	1	SAE 6	9,400	16	\$189
WTG 2x12	2	12	1.25	21	33	1	SAE 6	9,400	17	\$197
WTG 2x14	2	14	1.25	23	37	1	SAE 6	9,400	19	\$205
WTG 2x16	2	16	1.25	25	41	1	SAE 6	9,400	20	\$212
WTG 2x18	2	18	1.25	27	45	1	SAE 6	9,400	22	\$219
WTG 2x20	2	20	1.25	29	49	1	SAE 6	9,400	23	\$226
WTG 2x22	2	22	1.25	31	53	1	SAE 6	9,400	25	\$233
WTG 2x24	2	24	1.25	33	57	1	SAE 6	8,400	26	\$240
WTG 2x26	2	26	1.25	35	61	1	SAE 6	7,200	27	\$247
WTG 2x28	2	28	1.25	37	65	1	SAE 6	6,200	29	\$254
WTG 2x30	2	30	1.25	39	69	1	SAE 6	5,700	30	\$261

2.5" BORE	Tang Welded Double Acting Hydraulic Cylinders 3500 PSI									
SKU	BORE (INCH)	STROKE (INCH)	ROD Ø (INCH)	RETRACTED (INCHES)	EXTENDED (INCHES)	PIN Ø (INCH)	PORT SIZE	COLUMN LOAD	WEIGHT LBS	LIST PRICE
WTG 2.5x6	2.5	6	1.5	15	21	1	SAE 8	14,700	18	\$197
WTG 2.5x8	2.5	8	1.5	17	25	1	SAE 8	14,700	20	\$205
WTG 2.5x10	2.5	10	1.5	19	29	1	SAE 8	14,700	22	\$213
WTG 2.5x12	2.5	12	1.5	21	33	1	SAE 8	14,700	24	\$222
WTG 2.5x14	2.5	14	1.5	23	37	1	SAE 8	14,700	26	\$230
WTG 2.5x16	2.5	16	1.5	25	41	1	SAE 8	14,700	28	\$238
WTG 2.5x18	2.5	18	1.5	27	45	1	SAE 8	14,700	30	\$246
WTG 2.5x20	2.5	20	1.5	29	49	1	SAE 8	14,700	32	\$253
WTG 2.5x22	2.5	22	1.5	31	53	1	SAE 8	14,700	33	\$261
WTG 2.5x24	2.5	24	1.5	33	57	1	SAE 8	14,700	35	\$271
WTG 2.5x26	2.5	26	1.5	35	61	1	SAE 8	13,700	37	\$280
WTG 2.5x28	2.5	28	1.5	37	65	1	SAE 8	12,700	39	\$289
WTG 2.5x30	2.5	30	1.5	39	69	1	SAE 8	11,700	41	\$298

3" BORE		Tang Welded Double Acting Hydraulic Cylinders 3500 PSI							NEW SIZE	
SKU	BORE (INCH)	STROKE (INCH)	ROD Ø (INCH)	RETRACTED (INCHES)	EXTENDED (INCHES)	PIN Ø (INCH)	PORT SIZE	COLUMN LOAD	WEIGHT LBS	LIST PRICE
WTG 3x8	3	8	1.5	17	25	1	SAE 8	21,000	23	\$255
WTG 3x10	3	10	1.5	19	29	1	SAE 8	21,000	25	\$265
WTG 3x12	3	12	1.5	21	33	1	SAE 8	21,000	28	\$275
WTG 3x14	3	14	1.5	23	37	1	SAE 8	21,000	30	\$285
WTG 3x16	3	16	1.5	25	41	1	SAE 8	21,000	32	\$295
WTG 3x18	3	18	1.5	27	45	1	SAE 8	21,000	34	\$305
WTG 3x20	3	20	1.5	29	49	1	SAE 8	21,000	36	\$315
WTG 3x24	3	24	1.5	33	57	1	SAE 8	18,000	40	\$330
WTG 3x30	3	30	1.5	39	69	1	SAE 8	12,200	47	\$360



LOADER WELDED CYLINDER 3500 PSI

SPECIFICATIONS

Type:	Welded Hydraulic Cylinder
Action:	Double Acting
Rod End:	Wide cross-tube steel welded end
Base End:	Cross-tube high tensile steel end mounts
Bore:	1.75"-2.5"
Stroke:	14" - 23.5"
Rod:	Standard chrome plated rod steel 1045
Pressure:	3500 PSI
Color:	Black.



Free Ground
US Shipping

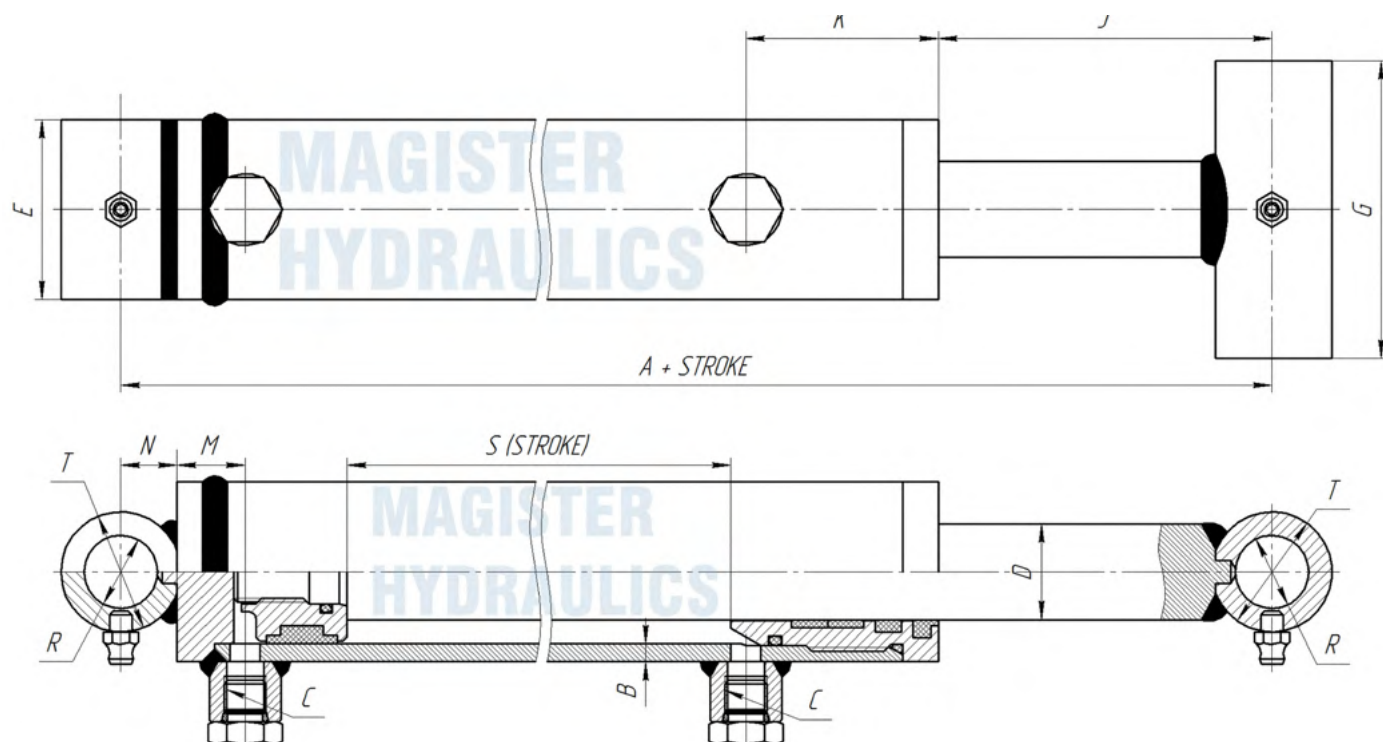


Made in
Europe



2 Year
Warranty





BORE	A	B	C	D	E	G	J	K	M	N	R	T
1.75"	varies	.19"	SAE 6	1.0"	2.13"	3.0"	varies	2.16"	.70"	.73"	1.01"	1.5"
2.0"	varies	.19"	SAE 6	1.25"	2.38"	2.76"	varies	2.05"	.70"	.98"	1.26"	2.0"
2.5"	varies	.19"	SAE 8	1.5"	2.87"	3.5"	varies	2.0"	.70"	.98"	1.26"	2.0"

1.75" BORE		Loader Welded Double Acting Hydraulic Cylinders 3500 PSI									
SKU	BORE (INCH)	STROKE (INCH)	ROD Ø (INCH)	RETRACTED (INCHES)	EXTENDED (INCHES)	PIN Ø (INCH)	PORT SIZE	COLUMN LOAD	WEIGHT LBS	LIST PRICE	
WLD 1.75x14	1.75	14	1	28.5	42.5	1	SAE 6	5,150	16	\$183	
WLD 1.75x18	1.75	18	1	27.25	45.25	1	SAE 6	5,150	17	\$190	

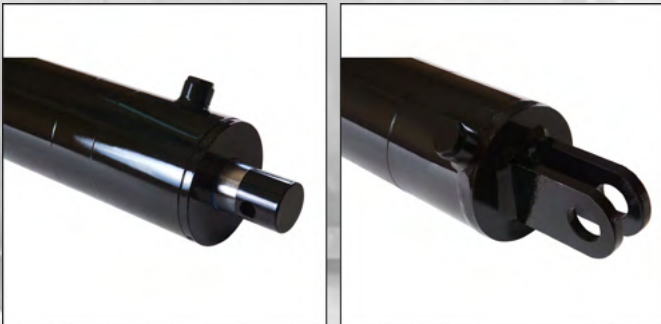
2" BORE		Loader Welded Double Acting Hydraulic Cylinders 3500 PSI									
SKU	BORE (INCH)	STROKE (INCH)	ROD Ø (INCH)	RETRACTED (INCHES)	EXTENDED (INCHES)	PIN Ø (INCH)	PORT SIZE	COLUMN LOAD	WEIGHT LBS	LIST PRICE	
WLD 2x19.25	2	19.25	1.25	26.875	46.125	1.25	SAE 6	9,400	23	\$221	
WLD 2x19.75	2	19.75	1.25	26.375	46.125	1.25	SAE 6	9,400	23	\$221	
WLD 2x22.75	2	22.75	1.25	29.875	52.625	1.25	SAE 6	9,400	25	\$224	

2.5" BORE		Loader Welded Double Acting Hydraulic Cylinders 3500 PSI									
SKU	BORE (INCH)	STROKE (INCH)	ROD Ø (INCH)	RETRACTED (INCHES)	EXTENDED (INCHES)	PIN Ø (INCH)	PORT SIZE	COLUMN LOAD	WEIGHT LBS	LIST PRICE	
WLD 2.5x18.25	2.5	18.25	1.5	31.75	50	1.25	SAE 8	14,700	33	\$246	
WLD 2.5x23.5	2.5	23.5	1.5	34	57.5	1.25	SAE 8	14,700	36	\$270	

LOG SPLITTER WELDED CYLINDER 3500 PSI

SPECIFICATIONS

Type:	Welded Hydraulic Cylinder
Action:	Double Acting
Rod End:	Drilled pin-hole
Base End:	Welded clevis mount
Bore:	4", 5"
Stroke:	24", 30"
Rod:	Standard chrome plated rod steel 1045
Pressure:	3500 PSI
Color:	Black.



Free Ground
US Shipping

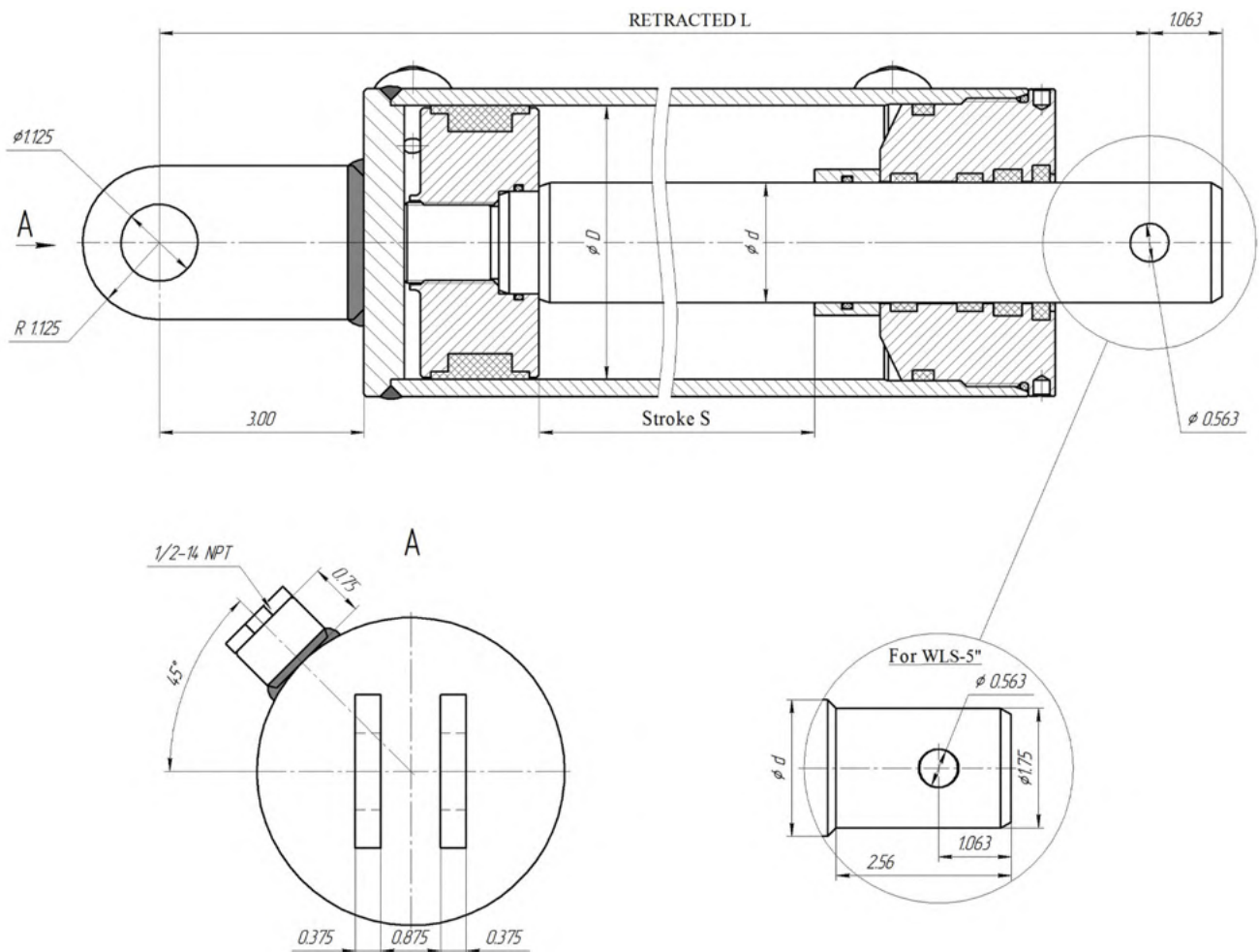


Made in
Europe



2 Year
Warranty





4" BORE Log Splitter Welded Double Acting Hydraulic Cylinder 3500 PSI											
SKU	BORE (INCH)	STROKE (INCH)	ROD Ø d (INCH)	RETRACTED (INCHES)	EXTENDED (INCHES)	PIN Ø (BASE)	PIN Ø (ROD)	PORT SIZE	COLUMN LOAD	WEIGHT LBS	LIST PRICE
WLS 4x24	4	24	1.75	34-1/2	58-1/2	1-1/8	9/16	1/2 NPT	36,000	67	\$349
WLS 4x30	4	30	1.75	40-1/2	70-1/2	1-1/8	9/16	1/2 NPT	36,000	75	\$389

5" BORE Log Splitter Welded Double Acting Hydraulic Cylinder 3500 PSI											
SKU	BORE (INCH)	STROKE (INCH)	ROD Ø d (INCH)	RETRACTED (INCHES)	EXTENDED (INCHES)	PIN Ø (BASE)	PIN Ø (ROD)	PORT SIZE	COLUMN LOAD	WEIGHT LBS	LIST PRICE
WLS 5x24	5	24	2	34-1/2	58-1/2	1-1/8	9/16	1/2 NPT	58,900	89	\$449
WLS 5x30	5	30	2	40-1/2	70-1/2	1-1/8	9/16	1/2 NPT	58,900	103	\$499



SNOW PLOW WELDED CYLINDER 2500 PSI

SPECIFICATIONS

Type:	Welded Hydraulic Cylinder
Action:	Single Acting
Bore:	1.5", 2"
Stroke:	6"-16"
Rod:	Standard chrome plated rod steel 1045
Pressure:	2500 PSI
Color:	Black.



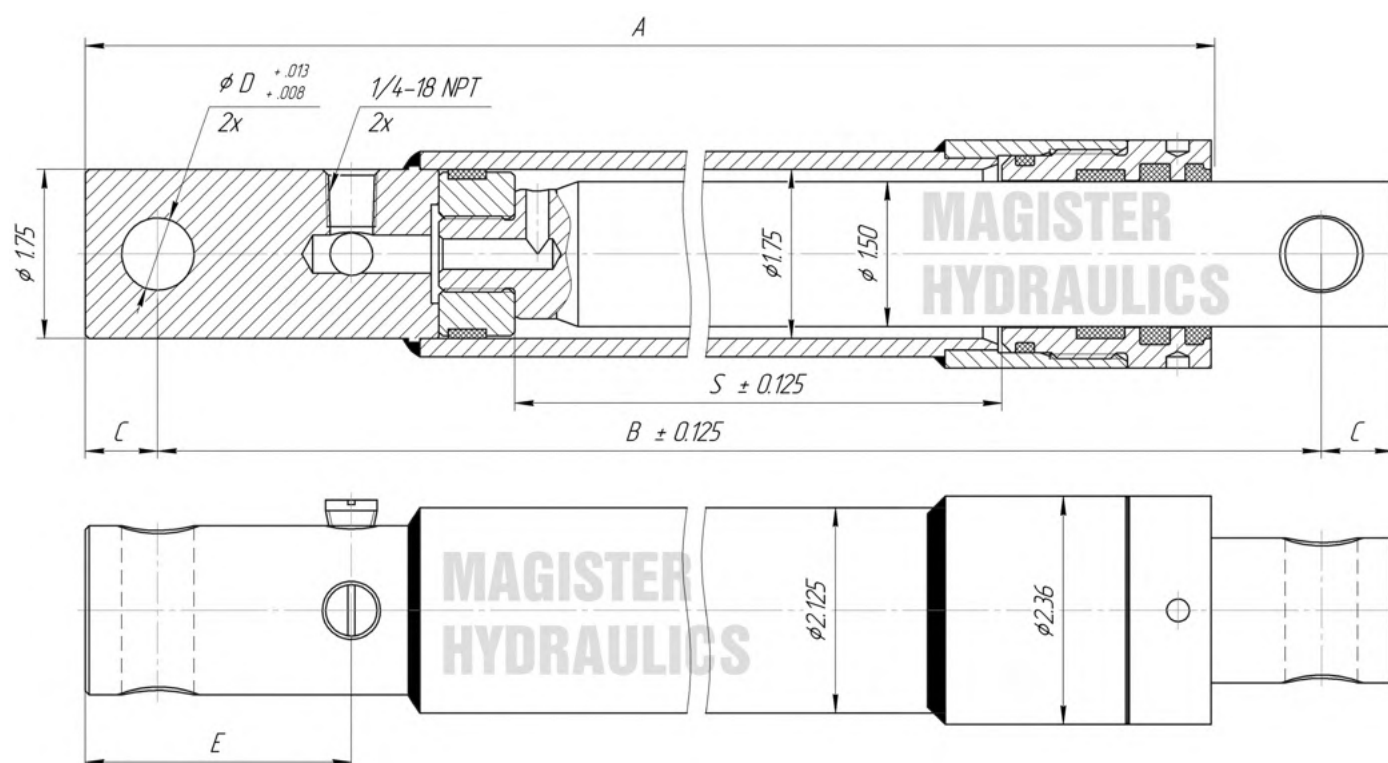
Free Ground
US Shipping



Made in
Europe

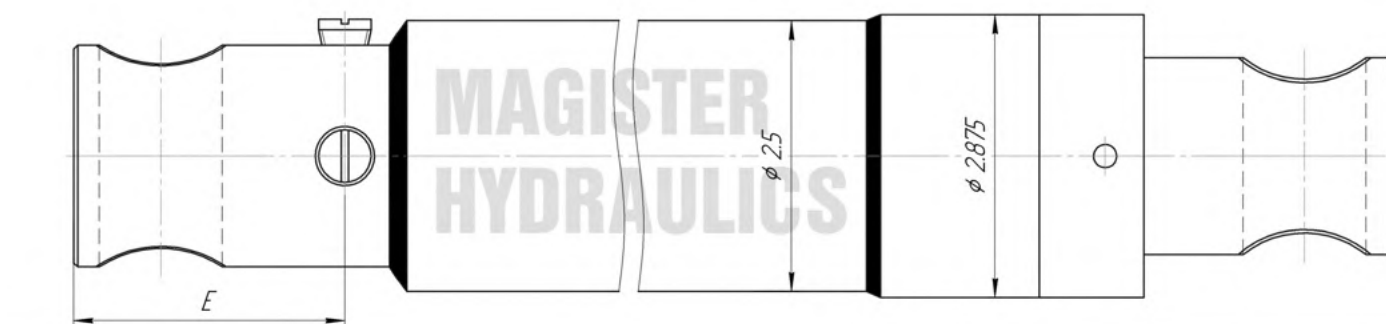
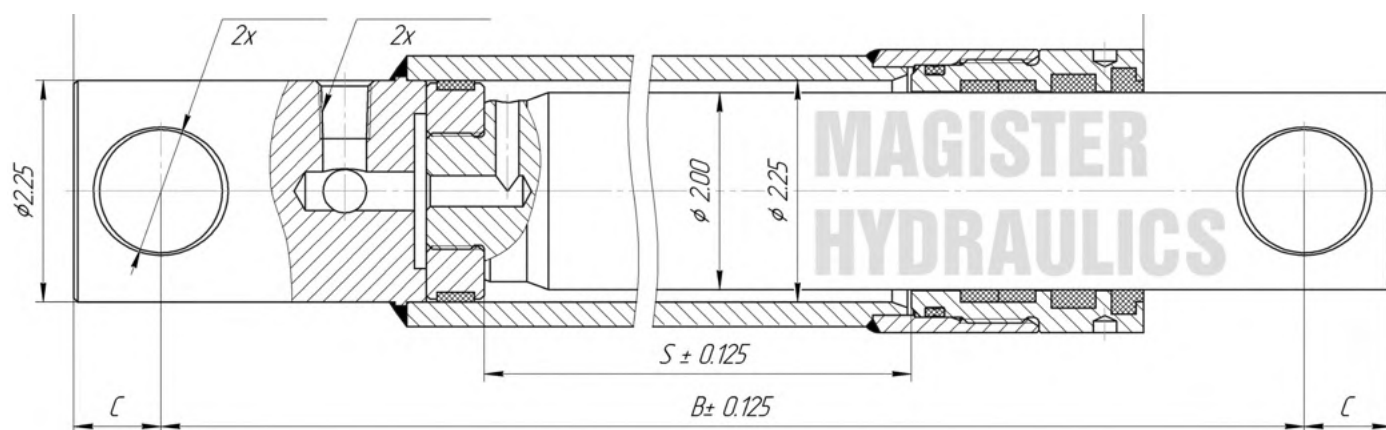


2 Year
Warranty



1.5" BORE	Snow Plow Welded Single Acting Hydraulic Cylinders 2500 PSI											
SKU	BORE (INCH)	STROKE (S) INCH	ROD Ø (INCH)	RETRACTED (B) INCH	EXTENDED (INCH)	PIN Ø (D) INCH	PORT SIZE (INCH)	A	C	E	WEIGHT LBS	LIST PRICE
WSP 1.5x6MYE	1.5	6	1.5	12	18	5/8	1/4 NPT	11-7/8	11/16	2	11	\$129
WSP 1.5x6WES	1.5	6	1.5	13	19	3/4	1/4 NPT	12-5/8	11/16	2-3/4	11	\$129
WSP 1.5x8WES	1.5	8	1.5	15-1/4	23-1/4	3/4	1/4 NPT	14-5/8	11/16	2-3/4	13	\$135
WSP 1.5x10MYE	1.5	10	1.5	16-1/4	26-1/4	5/8	1/4 NPT	15-7/8	11/16	2	15	\$139
WSP 1.5x10F&D	1.5	10	1.5	17-1/4	27-1/4	1	1/4 NPT	16-5/8	3/4	2-3/4	15	\$139
WSP 1.5x10W75	1.5	10	1.5	17-1/4	27-1/4	3/4	1/4 NPT	16-5/8	11/16	2-3/4	15	\$139
WSP 1.5x10W10	1.5	10	1.5	17-1/2	27-1/2	1	1/4 NPT	16-5/8	11/16	2-3/4	15	\$139
WSP 1.5x12MYE	1.5	12	1.5	18	30	5/8	1/4 NPT	17-7/8	11/16	2	16	\$145
WSP 1.5x12FIS	1.5	12	1.5	19-3/8	31-3/8	1	1/4 NPT	18-7/16	3/4	2-5/8	17	\$145





2" BORE		Snow Plow Welded Single Acting Hydraulic Cylinders 2500 PSI										
SKU	BORE (INCH)	STROKE (S) INCH	ROD Ø (INCH)	RETRACTED (B) INCH	EXTENDED (INCH)	PIN Ø (D) INCH	PORT SIZE (INCH)	A	C	E	WEIGHT LBS	LIST PRICE
WSP 2x10WES	2	10	2	17-1/4	27-1/4	1	1/4 NPT	16-5/8	11/16	2-3/4	23	\$169
WSP 2x16FIS	2	16	2	23-1/4	39-1/4	1-1/4	1/4 NPT	22-1/2	7/8	2-3/4	32	\$199
WSP 2x16W&D	2	16	2	23-5/8	39-5/8	1	1/4 NPT	22-5/8	11/16	2-3/4	32	\$199



UNIVERSAL WELDED CYLINDER 3500 PSI

SPECIFICATIONS

Type:	Welded Hydraulic Cylinder
Action:	Double Acting
Base End & Rod End:	Option for mounting various ends such as cross tubes, clevis etc.
Bore:	2", 2.5"
Stroke:	8" - 24"
Rod:	Standard chrome plated rod steel 1045
Pressure:	3500 PSI
Color:	Black.



Free Ground
US Shipping

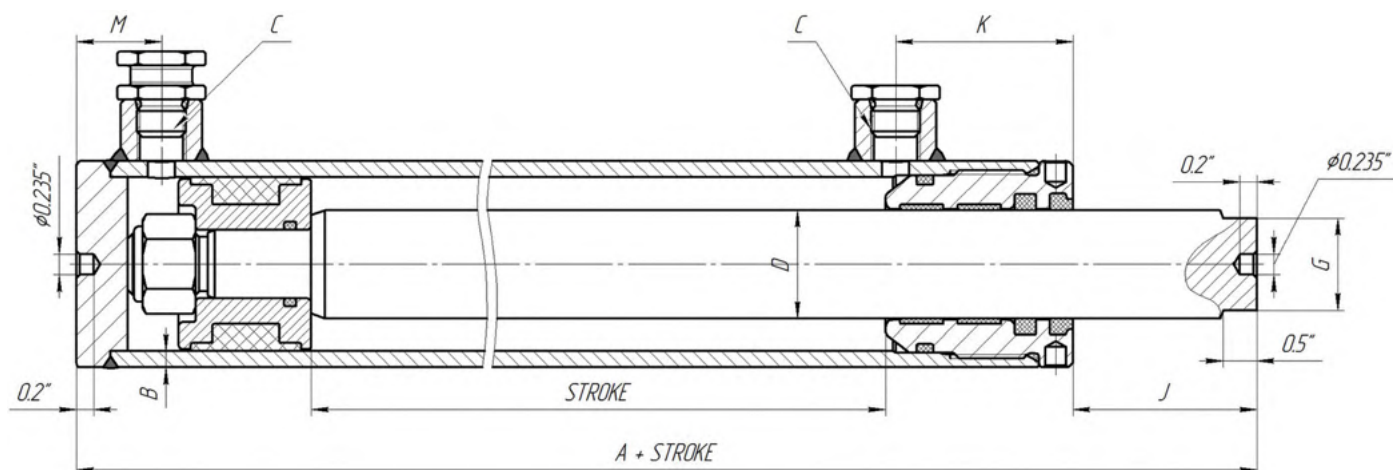


Made in
Europe



2 Year
Warranty





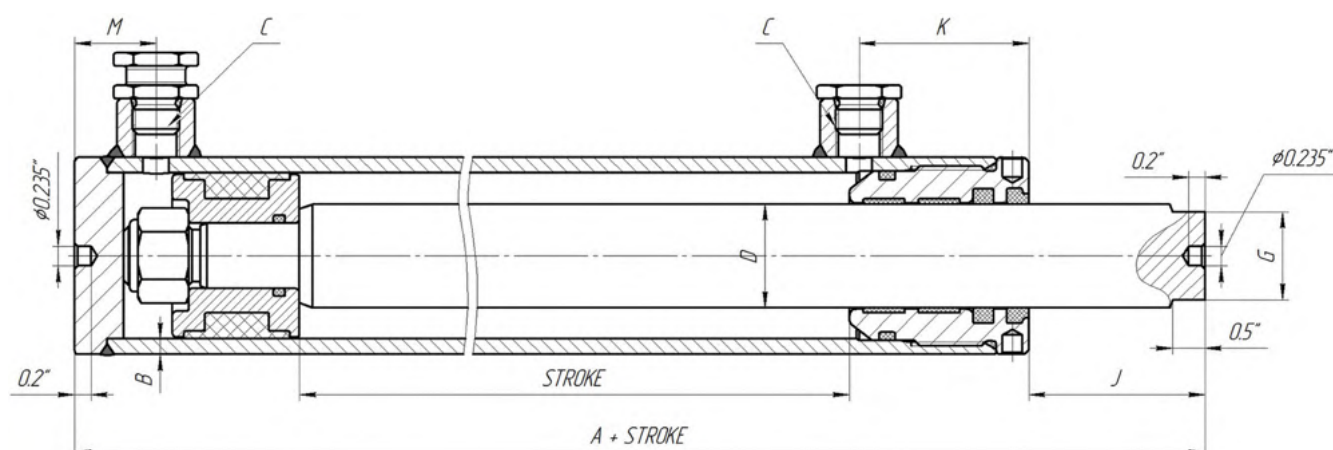
BORE	A	B	C	D	G	J	K	T
2.0"	7.0"	.19"	SAE 6	1.25"	1.13"	2.125"	2.05"	1.0"
2.5"	7.0"	.19"	SAE 8	1.5"	1.41"	2.125"	2.05"	1.0"

2" BORE	Welded Double Acting Universal Hydraulic Cylinders 3500 PSI								
SKU	BORE (INCH)	STROKE (INCH)	ROD Ø (INCH)	RETRACTED (INCHES)	EXTENDED (INCHES)	PORT SIZE	COLUMN LOAD	WEIGHT LBS	LIST PRICE
WUC 2x8	2	8	1.25	15	23	SAE 6	9,400	12	\$175
WUC 2x9	2	9	1.25	16	25	SAE 6	9,400	13	\$178
WUC 2x10	2	10	1.25	17	27	SAE 6	9,400	14	\$181
WUC 2x11	2	11	1.25	18	29	SAE 6	9,400	14	\$187
WUC 2x12	2	12	1.25	19	31	SAE 6	9,400	15	\$191
WUC 2x13	2	13	1.25	20	33	SAE 6	9,400	16	\$195
WUC 2x14	2	14	1.25	21	35	SAE 6	9,400	16	\$199
WUC 2x15	2	15	1.25	22	37	SAE 6	9,400	17	\$201
WUC 2x16	2	16	1.25	23	39	SAE 6	9,400	18	\$203
WUC 2x17	2	17	1.25	24	41	SAE 6	9,400	19	\$205
WUC 2x18	2	18	1.25	25	43	SAE 6	9,400	19	\$207
WUC 2x19	2	19	1.25	26	45	SAE 6	9,400	20	\$210
WUC 2x20	2	20	1.25	27	47	SAE 6	9,400	21	\$212
WUC 2x21	2	21	1.25	28	49	SAE 6	8,800	21	\$214
WUC 2x22	2	22	1.25	29	51	SAE 6	8,800	22	\$216
WUC 2x23	2	23	1.25	30	53	SAE 6	8,600	23	\$218
WUC 2x24	2	24	1.25	31	55	SAE 6	8,400	23	\$221





2.5" BORE	Welded Double Acting Universal Hydraulic Cylinders 3500 PSI								
SKU	BORE (INCH)	STROKE (INCH)	ROD Ø (INCH)	RETRACTED (INCHES)	EXTENDED (INCHES)	PORT SIZE	COLUMN LOAD	WEIGHT LBS	LIST PRICE
WUC 2.5x8	2.5	8	1.5	15	23	SAE 8	14,700	16	\$187
WUC 2.5x9	2.5	9	1.5	16	25	SAE 8	14,700	17	\$192
WUC 2.5x10	2.5	10	1.5	17	27	SAE 8	14,700	18	\$195
WUC 2.5x11	2.5	11	1.5	18	29	SAE 8	14,700	19	\$200
WUC 2.5x12	2.5	12	1.5	19	31	SAE 8	14,700	20	\$208
WUC 2.5x13	2.5	13	1.5	20	33	SAE 8	14,700	21	\$211
WUC 2.5x14	2.5	14	1.5	21	35	SAE 8	14,700	22	\$214
WUC 2.5x15	2.5	15	1.5	22	37	SAE 8	14,700	23	\$219
WUC 2.5x16	2.5	16	1.5	23	39	SAE 8	14,700	24	\$224
WUC 2.5x17	2.5	17	1.5	24	41	SAE 8	14,700	25	\$229
WUC 2.5x18	2.5	18	1.5	25	43	SAE 8	14,700	25	\$233
WUC 2.5x19	2.5	19	1.5	26	45	SAE 8	14,700	26	\$238
WUC 2.5x20	2.5	20	1.5	27	47	SAE 8	14,700	27	\$242
WUC 2.5x21	2.5	21	1.5	28	49	SAE 8	14,700	28	\$247
WUC 2.5x22	2.5	22	1.5	29	51	SAE 8	14,700	29	\$250
WUC 2.5x23	2.5	23	1.5	30	53	SAE 8	14,700	30	\$254
WUC 2.5x24	2.5	24	1.5	31	55	SAE 8	14,700	31	\$257



POWER UNITS



STOCK OPTIONS:

VOLTAGE: 12/24DC	PRESSURE: 2500-3000 PSI
ACTION: Single/Double Acting	TANK: 4-12 quarts, plastic/steel

Hydraulic power units with direct 12V or 24V current. Our power units can be used for various applications, such as dump trailers, snowplows, wheelchair lifts, and liftgates.

All our power units are manufactured in accordance with US industrial standards. Our products are quality-checked and tested after assembly to ensure they meet the highest standards.

Whether in manufacturing, construction, or material handling, these units can be used for tasks like lifting, bending, and pressing.

Our power units can be used for various applications, including:

- Dump Trailers
- Snow plows
- Wheelchair Lifts
- Liftgates
- Dock Levelers
- Man Lifts
- Car Lifts

BENEFITS:



Free US shipping



1-year warranty



Volume Discount



Made in Europe



Tariff-free product

CUSTOM
POWER UNITS


- Single and Double Acting
- Any type of mobile application
- 12VDC, 24VDC, and AC options
- Custom shape and size of reservoirs
- Oil volume displacement according to customer's specs
- Custom applications such as Lift Gate, Dump trailer, Log splitter, Wheelchair, Scissor Lift, Snow Plow, etc.
- Extra custom accessories are available

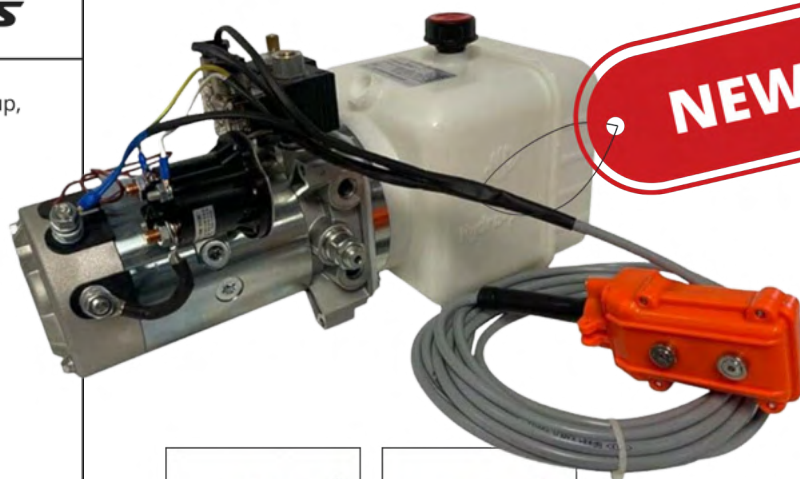
Magister Hydraulics manufactures custom power units of any complexity. All custom power units we build are made according to customer requirements and needs.

All custom power units require a minimum order quantity of 50 items per order.

DUMP TRAILER POWER UNIT

SPECIFICATIONS

Action:	Double Acting (power up, power down)
Motor:	1.6kW - 12V DC
Working Pressure:	2100 PSI
Relief valve:	2500 PSI
Max Flow :	1.25 GPM
MAX RPM :	2500
Displacement:	0.128 cubic inch/rev
Hydraulic schematic:	HPP-DT-111
Oil reservoir:	Options for 4, 6, 8quarts (plastic)



Dump Trailer Hydraulic Power Units Double Acting 12VDC

SKU	ACTION	TANK (QTs)	TANK MATERIAL	GPM @ 2500PSI	PRESSURE (PSI)	PORT SIZE	LENGTH (INCH)	WIDTH (INCH)	HEIGHT (INCH)	WEIGHT LBS	LIST PRICE
HPU-DT-111-12VDC-DA-04	Double	4	Plastic	1.25	2100	SAE 6	17	8	8	32	\$390.00
HPU-DT-111-12VDC-DA-06	Double	6	Plastic	1.25	2100	SAE 6	20	8	8	32	\$390.00
HPU-DT-111-12VDC-DA-08	Double	8	Plastic	1.25	2100	SAE 6	24	8	8	32	\$390.00



Free Ground
US Shipping



Made in
Europe



1 Year
Warranty



MAGISTERHYD.COM

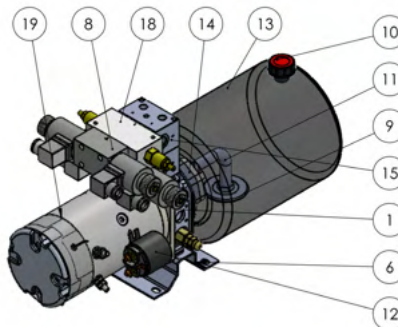
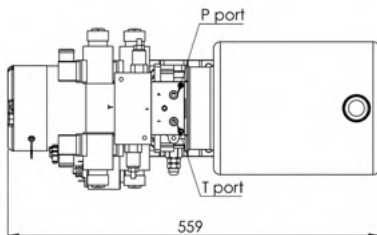
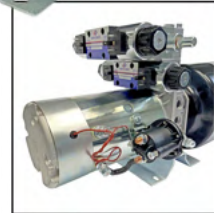
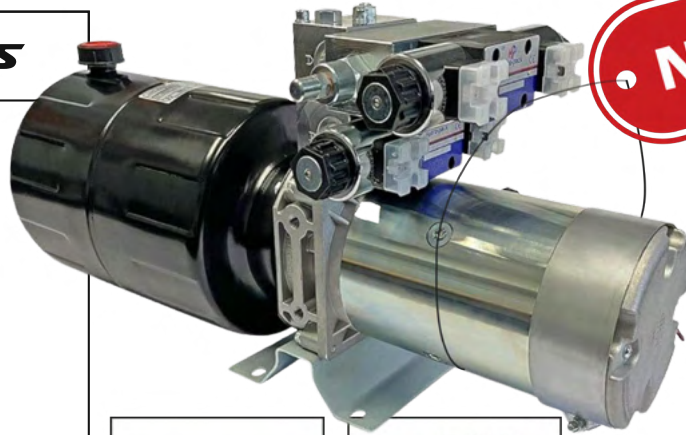


973-344-5313

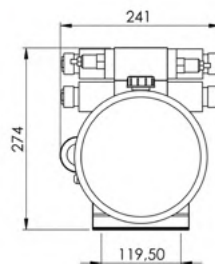
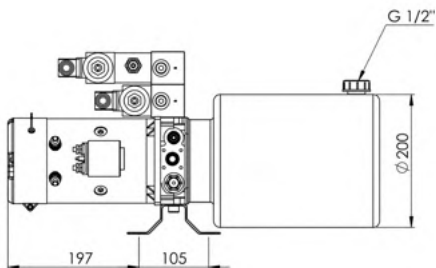
SNOW PLOW POWER UNIT

SPECIFICATIONS

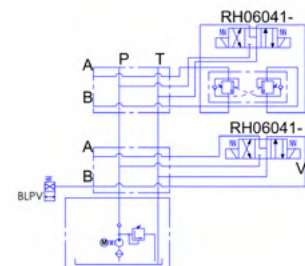
Action:	Double Acting
Motor:	3kw 12V/24V DC
Max Pressure:	2900 PSI
Relief valve:	2900 PSI
Max Flow :	1.8 GPM
MAX RPM :	3500
Displacement:	0.13 ci/rev
Tank:	8 Quarts steel
Port Size:	SAE 8



PART NO.	PART NAME	QTY.
1	MBWOP-10	1
4	DC coupling	1
5	Return Plastic	1
6	Connection plate	1
8	RH06041-	2
9	Filter	1
10	AB-1/2"	1
11	SP-90-L	1
12	STX V150	1
13	TV08Y	1
14	10C2.1X302	1
15	HP A03	2
18	OWC-6M 25 AB	1
19	DC MY-3-3500	1



Hydraulic Circuit
 A, B = 3/4-16 UNF
 P, T = 9/16-18 UNF



Snow Plow Double Acting Hydraulic Power Units

SKU	ACTION	Voltage (V)	TANK (QTs)	TANK MATERIAL	GPM @ 2500PSI	PRESSURE (PSI)	PORT SIZE	LENGTH (INCH)	WIDTH (INCH)	HEIGHT (INCH)	LIST PRICE
HPU-SP-12VDC	Double	12	8	Steel	1.8	2900	SAE 8	24	8	10	\$799.00
HPU-SP-24VDC	Double	24	8	Steel	1.8	2900	SAE 8	24	8	10	\$850.00



Free Ground
US Shipping



Made in
Europe

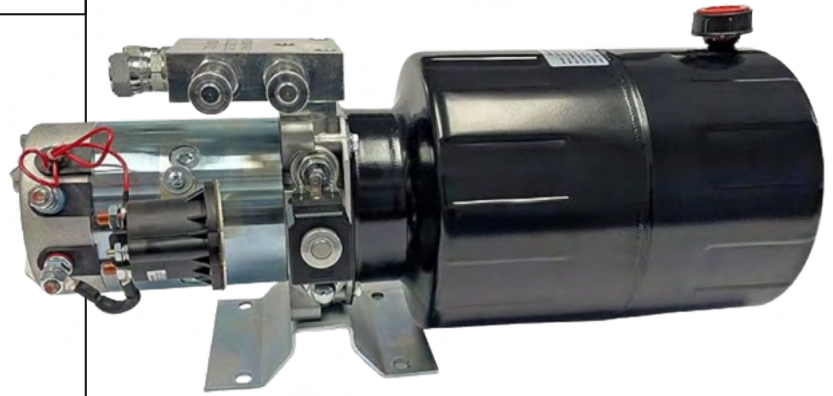


1 Year
Warranty

LIFT GATE POWER UNIT

SPECIFICATIONS

Action:	Single Acting
Motor:	2.2kw 24V DC
Max Pressure:	2900 PSI
Max Flow :	1.3 GPM
Relief Valve :	2900 PSI
Pump Displacement :	0.13 ci/rev
MAX RPM :	2500
Tank:	8 Quarts steel
Port Size:	SAE 8



SKU: HPU-LG-24VDC

List Price: \$530



Free Ground
US Shipping



Made in
Europe



1 Year
Warranty

WHEELCHAIR LIFT POWER UNIT

SPECIFICATIONS

Action:	Single Acting
Motor:	2.2kw 24V DC
Max Pressure:	2900 PSI
Max Flow :	1.3 GPM
Relief Valve :	2900 PSI
Pump Displacement :	0.13 ci/rev
MAX RPM :	2500
Tank:	8 Quarts steel
Port Size:	SAE 8



SKU: HPU-WC-12VDC

List Price: \$350

SINGLE ACTING POWER UNIT



**Free Ground
US Shipping**



**Made in
Europe**



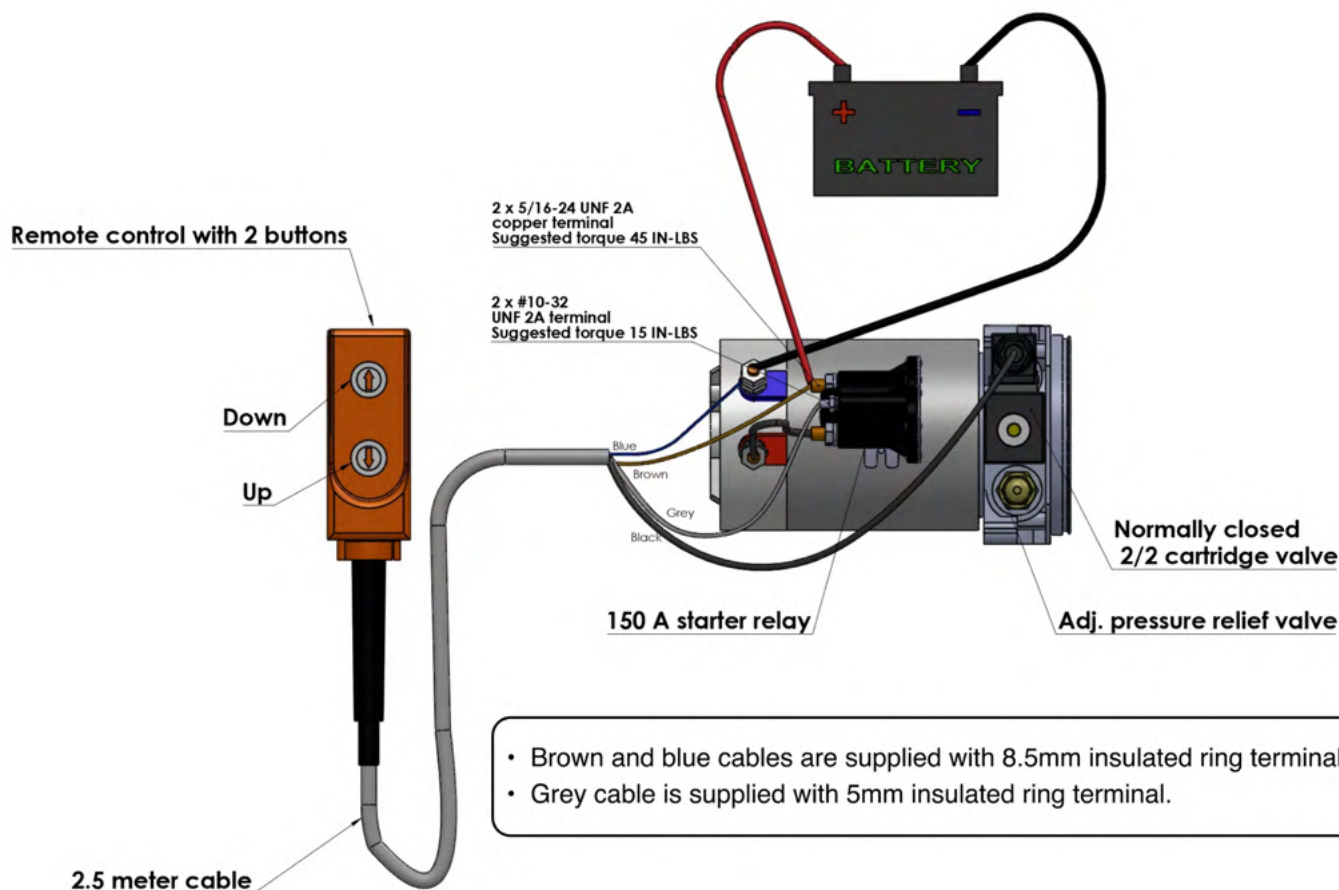
**1 Year
Warranty**



SPECIFICATIONS

Ports Size:	SAE 8
Average Flow:	1.1 GPM@2500PSI
Action:	Single Acting
Tank Options:	4, 6, 8, 12 Quarts, steel/plastic
Pressure:	2600 PSI.
Remote included.	





Single Acting Hydraulic Power Units 12VDC

SKU	ACTION	TANK (QTs)	TANK MATERIAL	GPM @ 2500PSI	PRESSURE (PSI)	PORT SIZE	LENGTH (INCH)	WIDTH (INCH)	HEIGHT (INCH)	WEIGHT LBS	LIST PRICE
HPU-SR-12VDC-SA-04	Single	4	Steel	1.1	2500	SAE 8	17	8	8	32	\$390
HPU-SR-12VDC-SA-06	Single	6	Steel	1.1	2500	SAE 8	20	8	8	32	\$390
HPU-SR-12VDC-SA-08	Single	8	Steel	1.1	2500	SAE 8	24	8	8	32	\$395
HPU-SR-12VDC-SA-10	Single	10	Steel	1.1	2500	SAE 8	28	8	8	33	\$399
HPU-SR-12VDC-SA-12	Single	12	Steel	1.1	2500	SAE 8	31	8	8	34	\$399

HPU-PR-12VDC-SA-04	Single	4	Plastic	1.1	2500	SAE 8	17	8	8	31	\$390
HPU-PR-12VDC-SA-06	Single	6	Plastic	1.1	2500	SAE 8	20	8	8	31	\$390
HPU-PR-12VDC-SA-08	Single	8	Plastic	1.1	2500	SAE 8	24	8	8	31	\$395



DOUBLE ACTING POWER UNIT



**Free Ground
US Shipping**



**Made in
Europe**



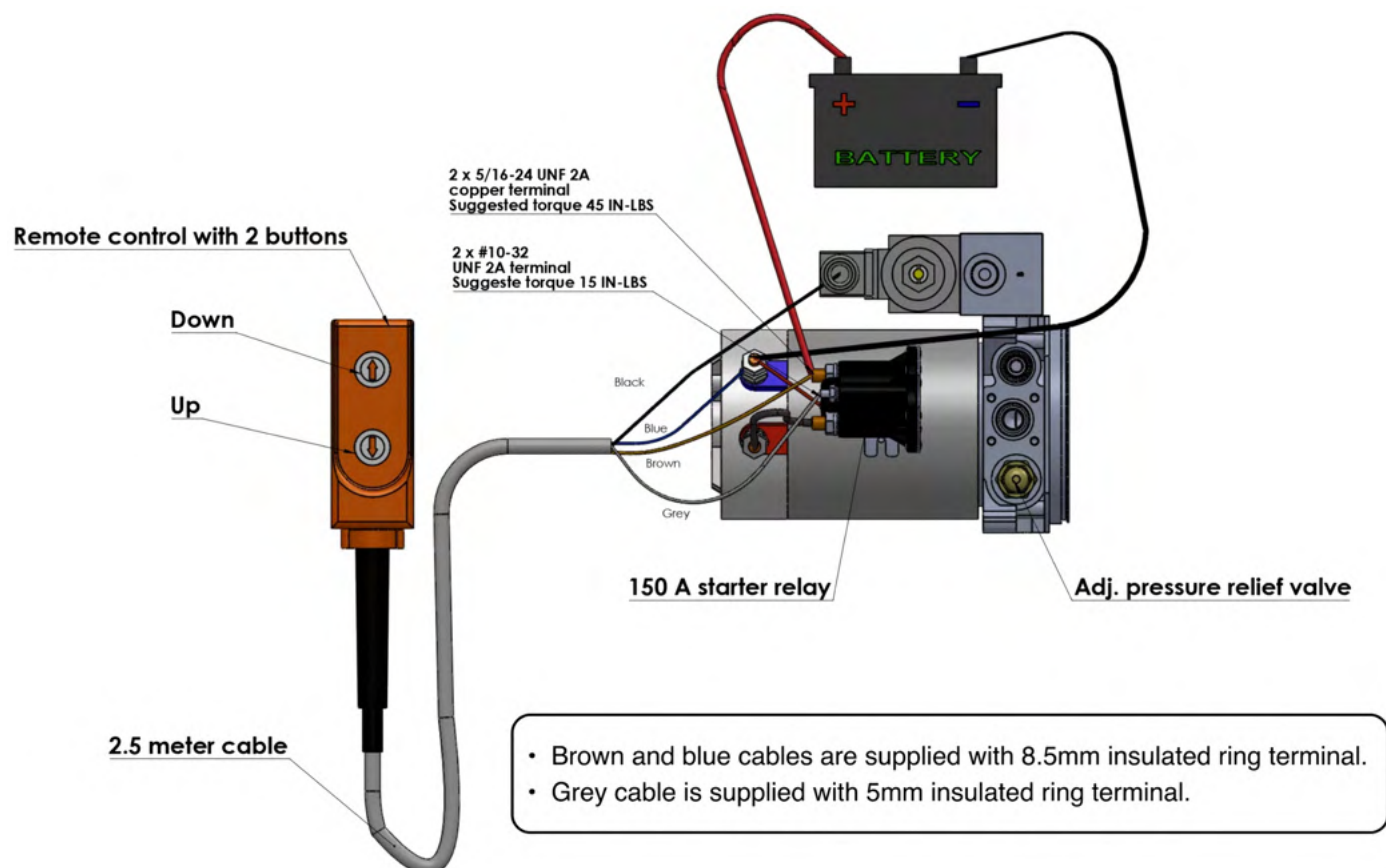
**1 Year
Warranty**



SPECIFICATIONS

Ports Size:	SAE 8
Average Flow:	1.1 GPM@2500PSI
Action:	Double Acting
Tank Options:	4, 6, 8, 12 Quarts, steel/plastic
Pressure:	2600 PSI.
Remote included.	





Double Acting Hydraulic Power Units 12VDC

SKU	ACTION	TANK (QTs)	TANK MATERIAL	GPM @ 2500PSI	PRESSURE (PSI)	PORT SIZE	LENGTH (INCH)	WIDTH (INCH)	HEIGHT (INCH)	WEIGHT LBS	LIST PRICE
HPU-SR-12VDC-DA-04	Double	4	Steel	1.1	2500	SAE 8	17	8	8	32	\$395
HPU-SR-12VDC-DA-06	Double	6	Steel	1.1	2500	SAE 8	20	8	8	32	\$395
HPU-SR-12VDC-DA-08	Double	8	Steel	1.1	2500	SAE 8	24	8	8	32	\$399
HPU-SR-12VDC-DA-10	Double	10	Steel	1.1	2500	SAE 8	28	8	8	33	\$399
HPU-SR-12VDC-DA-12	Double	12	Steel	1.1	2500	SAE 8	31	8	8	34	\$399

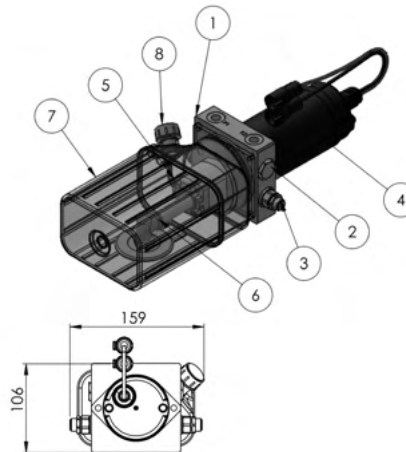
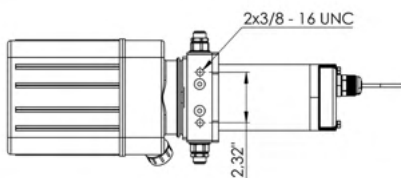
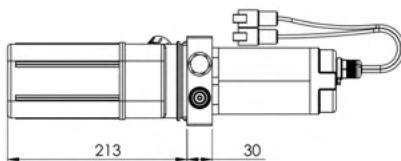
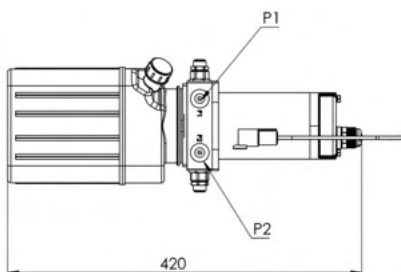
HPU-PR-12VDC-DA-04	Double	4	Plastic	1.1	2500	SAE 8	17	8	8	31	\$395
HPU-PR-12VDC-DA-06	Double	6	Plastic	1.1	2500	SAE 8	20	8	8	31	\$399
HPU-PR-12VDC-DA-08	Double	8	Plastic	1.1	2500	SAE 8	24	8	8	31	\$399



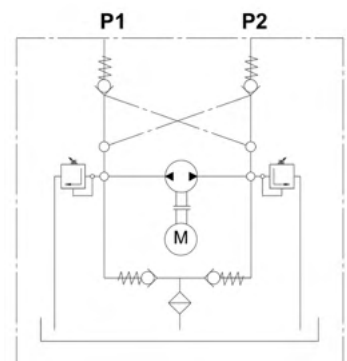
BIDIRECTIONAL POWER UNIT

SPECIFICATIONS

Action:	Double Acting
Motor:	0.5kw 12V DC
Max Pressure:	2900 PSI
Max Flow :	0.4 GPM
Relief Valve :	2900 PSI
Pump Displacement :	0.03 ci/rev
MAX RPM :	3500
Tank:	2 Quarts Plastic
Port Size:	SAE 6


SKU: HPU-BD-12VDC-DA
List Price: \$349


PART NO.	PART NAME	QTY.
1	Main Block	1
2	Check Valve	2
3	Pressure Relief Valve	2
4	DC12MY-0.5-IP67-0.2	1
5	00R0.5X356	1
6	Filter and filter pipe	2
7	TPL02Y	1
8	A-B 3/8"	1

Hydraulic Circuit
P1 , P2 = 7/16" - 20 UNF


The cables are 10 AWG with DTHD04-1-8P connectors


**Free Ground
US Shipping**

**Made in
Europe**

**1 Year
Warranty**

HAND PUMPS



HEAVY-DUTY HYDRAULIC HAND PUMPS - manually operated with durable cast iron monoblock body. Ready for outdoor use. Made in Europe utilizing American standards. 21" steel handle included.



STOCK OPTIONS:

ACTION:

Single Acting/Double Acting

RESERVOIR SIZE (QTS):

1/3/5

CID (CUBIC INCHES DISPLACEMENT):

1.5/2.7

PISON ACTION:

Double Function

RESERVOIR MATERIAL:

Steel

MAX PRESSURE (PSI):

3600

MOUNTING HOLES:

4×0.3"

WORKING PORT:

3/8" NPTF

CUSTOM OPTIONS:

Magister Hydraulics manufactures custom hand pumps of any complexity. All custom hand pumps we build are made according to customer requirements and needs. All custom hand pumps require a minimum order quantity of 50 items per order.

Single and Double Acting

Custom shape and size of reservoirs

Custom shape handles

Multiple options for oil volume displacement

Other upgrades available

BENEFITS:



Free US shipping



1-year warranty



Volume Discount



Made in Europe



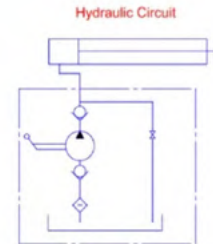
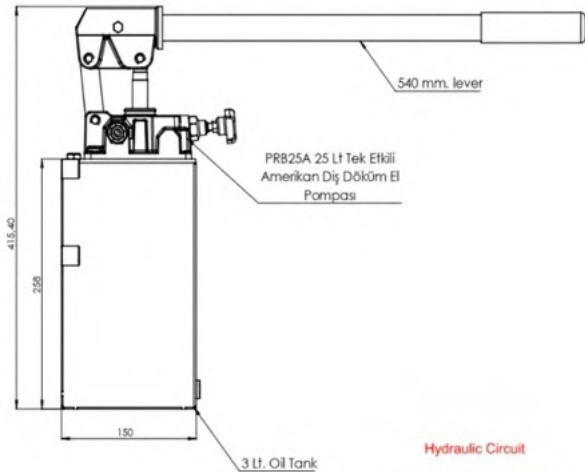
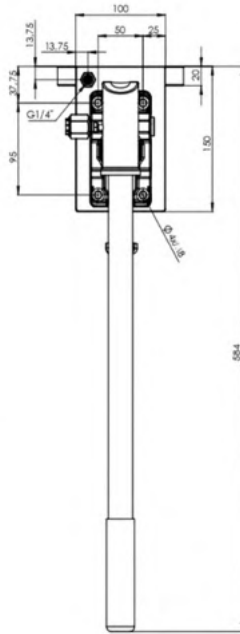
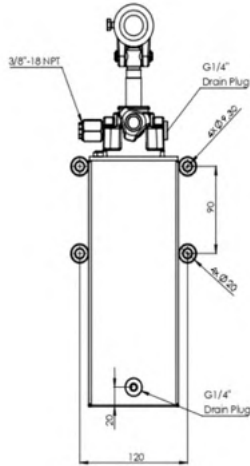
Tariff-free product



SINGLE ACTING HAND PUMP

SPECIFICATIONS

CID: 1.5/2.7
Action: Single Acting
Tank (QTS): 1/3/5
Tank Material: Steel
Piston Action: Double Function
Max PSI: 3600
Mounting Holes: 4x 0.3"
Working Port: 3/8" NPTF



Code number: HHP-SA-1.5-03
 Displacement: 25 cc per stroke
 Rated pressure: 120 bar
 Max. pressure: 350 bar

Note: Hand pumps are supplied with chrome plated shaft and unloading valve with corrosion resistance painted housing.
 Pressure relief valve and rubber dust cover are optional.

Single Acting Hydraulic Piston Hand Pumps with Release Knob - Steel Reservoir

SKU	CUBIC INCH DISPLACEM.	CYLINDER ACTION	RESERVOIR SIZE, QTS	RESERVOIR MATERIAL	MAX PSI	PISTON ACTION	MOUNTING HOLES	WORKING PORT	LIST PRICE
HHP-SA-1.5-01	1.5	Single Acting	1	Steel	3600	Double Function	4x 0.3"	3/8" NPTF	\$130
HHP-SA-1.5-03	1.5	Single Acting	3	Steel	3600	Double Function	4x 0.3"	3/8" NPTF	\$135
HHP-SA-1.5-05	1.5	Single Acting	5	Steel	3600	Double Function	4x 0.3"	3/8" NPTF	\$145
HHP-SA-2.7-01	2.7	Single Acting	1	Steel	3600	Double Function	4x 0.3"	3/8" NPTF	\$145
HHP-SA-2.7-03	2.7	Single Acting	3	Steel	3600	Double Function	4x 0.3"	3/8" NPTF	\$150

Customization of hand pumps, levers & reservoirs is available upon request

DOUBLE ACTING HAND PUMP

SPECIFICATIONS

CID: 1.5/2.7

Action: Double Acting

Tank (QTS): 3/5

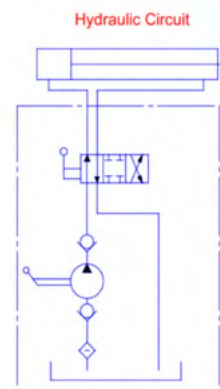
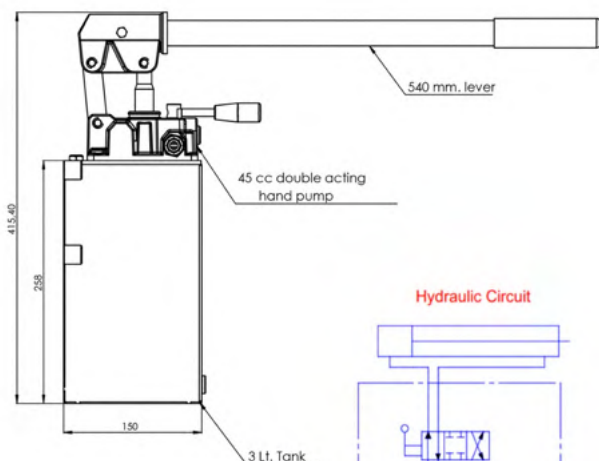
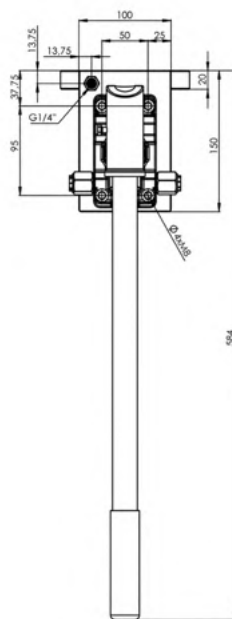
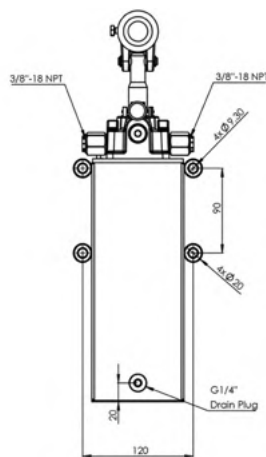
Tank Material: Steel

Piston Action: Double Function

Max PSI: 3600

Mounting Holes: 4x 0.3"

Working Port: 3/8" NPTF



Code number: HHP-DA-2.7-03
Displacement: 45 cc per stroke
Rated pressure: 80 bar
Max. pressure: 280 bar

Note: Hand pumps are supplied with chrome plated shaft with corrosion resistance painted housing. Pressure relief valve and rubber dust cover are optional.

Double Acting Hydraulic Piston Hand Pumps with Release Knob - Steel Reservoir

SKU	CUBIC INCH DISPLACEM.	CYLINDER ACTION	RESERVOIR SIZE, QTS	RESERVOIR MATERIAL	MAX PSI	PISTON ACTION	MOUNTING HOLES	WORKING PORT	LIST PRICE
HHP-DA-1.5-03	1.5	Double Acting	3	Steel	3600	Double Function	4x 0.3"	3/8" NPTF	\$150
HHP-DA-1.5-05	1.5	Double Acting	5	Steel	3600	Double Function	4x 0.3"	3/8" NPTF	\$155
HHP-DA-2.7-03	2.7	Double Acting	3	Steel	3600	Double Function	4x 0.3"	3/8" NPTF	\$160
HHP-DA-2.7-05	2.7	Double Acting	5	Steel	3600	Double Function	4x 0.3"	3/8" NPTF	\$165

Customization of hand pumps, levers & reservoirs is available upon request

GEAR PUMPS



Magister Hydraulics focuses on creating gear pumps with consistent flow rates, optimal pressure levels, and smooth operation through meticulous design and precision manufacturing. Our pumps are constructed with durable materials, ensuring longevity and resistance to wear and tear.

Magister Hydraulics products are quality-checked and tested after assembly to ensure they meet the highest standards. We provide you with a wide range of premium hydraulic gear pumps, manufactured in Europe. Magister gear pumps are great replacements for a variety of farming and material-handling equipment.

STOCK OPTIONS:

CID (CUBIC INCHES DISPLACEMENT) 0.07 – 2.74	SHAFT TYPE: 5/8" Keyed, 3/4" Keyed, 7/8" Keyed, 9-Tooth Spline, 13-Tooth Spline, Flat Tang		
MAX RPM: 2500 – 4000 revolutions	GPM @2000 RPM: 0.95 – 23.72 gallons	ROTATION DIRECTION: Clockwise (CW, Right)/Counter-clockwise(CCW, Left)	
MOUNTING FLANGE: SAE B – 2 Bolts	OUTLET PORT: SAE 10, SAE 12	INLET PORT: SAE 12, SAE 16, NPT 3/8	MATERIAL: Aluminium, Cast Iron



CUSTOM OPTIONS:

Magister Hydraulics manufactures custom gear pumps of any complexity. All custom gear pumps we build are made according to customer requirements and needs. All custom gear pumps require a minimum quantity of 50 items per order.

- Aluminum and cast iron options available
- Volume displacement up to customer's specs
- Multiple stacked pump options
- Left and right rotations
- Custom-made shafts
- Custom-made flanges meet US and EU standards



**Free Ground
US Shipping**



**Made in
Europe**



**1 Year
Warranty**

**Also Magister Hydraulics supplies
aftermarket hydraulic gear pumps for
various equipment of such brands as:**

- Bobcat
- Massey Ferguson
- John Deere
- Kubota



GEAR PUMPS

5/8" KEYED

SPECIFICATIONS

Pressure:

From 2100 up to 3600 PSI

Max RPM:

From 2500 to 4000 RPM

Body construction:

Aluminum

Displacement sizes:

From 0.27 to 1.7 cu.in/rev

Mounting flange:

Standard SAE A - 2 bolts

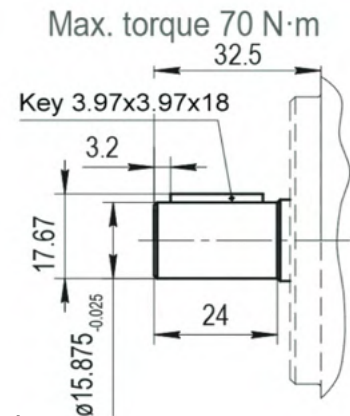
Shaft type

5/8" Diameter, Keyed

Key size:

5/32" Straight Key


 1 Year
Warranty

 Free Ground
US Shipping

MAGISTER Gear Pump: 5/8" Diameter Straight Keyed Shaft, Aluminum Body, Cast Iron Flange, 1.25" Shaft Length

SKU	CUBIC INCH DISPLACEM.	MOUNTING FLANGE (CAST IRON)	MAX RPM	MAX PSI	GPM @ 2000 RPM	SHAFT TYPE	ROTATION	INLET PORT	OUTLET PORT	MATERIAL (COVERS)	LIST PRICE
HGP CI58K-A02-027R	0.27	SAE A - 2 bolt	4000	3600	2.33	5/8" Keyed	CW	SAE 12	SAE 10	Cast Iron	\$140
HGP CI58K-A02-027L	0.27	SAE A - 2 bolt	4000	3600	2.33	5/8" Keyed	CCW	SAE 12	SAE 10	Cast Iron	\$140
HGP CI58K-A02-038R	0.38	SAE A - 2 bolt	4000	3600	3.29	5/8" Keyed	CW	SAE 12	SAE 10	Cast Iron	\$142
HGP CI58K-A02-038L	0.38	SAE A - 2 bolt	4000	3600	3.29	5/8" Keyed	CCW	SAE 12	SAE 10	Cast Iron	\$142
HGP CI58K-A02-050R	0.5	SAE A - 2 bolt	3500	3600	4.32	5/8" Keyed	CW	SAE 12	SAE 10	Cast Iron	\$144
HGP CI58K-A02-050L	0.5	SAE A - 2 bolt	3500	3600	4.32	5/8" Keyed	CCW	SAE 12	SAE 10	Cast Iron	\$144
HGP CI58K-A02-061R	0.61	SAE A - 2 bolt	3500	3600	5.28	5/8" Keyed	CW	SAE 12	SAE 10	Cast Iron	\$146
HGP CI58K-A02-061L	0.61	SAE A - 2 bolt	3500	3600	5.28	5/8" Keyed	CCW	SAE 12	SAE 10	Cast Iron	\$146
HGP CI58K-A02-069R	0.69	SAE A - 2 bolt	3500	3600	5.97	5/8" Keyed	CW	SAE 12	SAE 10	Cast Iron	\$149
HGP CI58K-A02-069L	0.69	SAE A - 2 bolt	3500	3600	5.97	5/8" Keyed	CCW	SAE 12	SAE 10	Cast Iron	\$149
HGP CI58K-A02-076R	0.76	SAE A - 2 bolt	3500	3600	6.58	5/8" Keyed	CW	SAE 12	SAE 10	Cast Iron	\$152
HGP CI58K-A02-076L	0.76	SAE A - 2 bolt	3500	3600	6.58	5/8" Keyed	CCW	SAE 12	SAE 10	Cast Iron	\$152
HGP CI58K-A02-085R	0.85	SAE A - 2 bolt	3500	3600	7.35	5/8" Keyed	CW	SAE 12	SAE 10	Cast Iron	\$155
HGP CI58K-A02-085L	0.85	SAE A - 2 bolt	3500	3600	7.35	5/8" Keyed	CCW	SAE 12	SAE 10	Cast Iron	\$155
HGP CI58K-A02-097R	0.97	SAE A - 2 bolt	3000	3600	8.39	5/8" Keyed	CW	SAE 12	SAE 10	Cast Iron	\$158
HGP CI58K-A02-097L	0.97	SAE A - 2 bolt	3000	3600	8.39	5/8" Keyed	CCW	SAE 12	SAE 10	Cast Iron	\$158
HGP CI58K-A02-122R	1.22	SAE A - 2 bolt	3000	3000	10.56	5/8" Keyed	CW	SAE 12	SAE 10	Cast Iron	\$161
HGP CI58K-A02-122L	1.22	SAE A - 2 bolt	3000	3000	10.56	5/8" Keyed	CCW	SAE 12	SAE 10	Cast Iron	\$161
HGP CI58K-A02-137R	1.37	SAE A - 2 bolt	3000	2700	11.86	5/8" Keyed	CW	SAE 12	SAE 10	Cast Iron	\$166
HGP CI58K-A02-137L	1.37	SAE A - 2 bolt	3000	2700	11.86	5/8" Keyed	CCW	SAE 12	SAE 10	Cast Iron	\$166
HGP CI58K-A02-170R	1.7	SAE A - 2 bolt	2500	2100	14.71	5/8" Keyed	CW	SAE 12	SAE 10	Cast Iron	\$171
HGP CI58K-A02-170L	1.7	SAE A - 2 bolt	2500	2100	14.71	5/8" Keyed	CCW	SAE 12	SAE 10	Cast Iron	\$171



GEAR PUMPS

3/4" KEYED

SPECIFICATIONS

Displacement sizes:

From 0.27 to 1.7 cu.in/rev

Key size:

5/32" Straight Key

Mounting flange:

Standard SAE A - 2 bolts

Inlet port:

Side SAE 12

Shaft type:

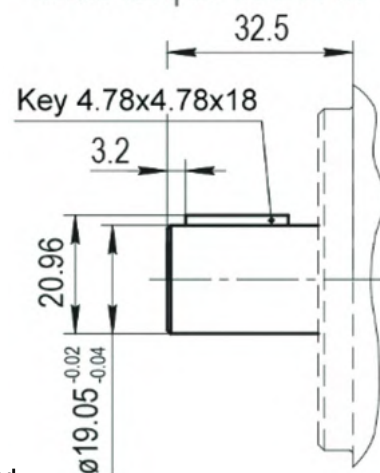
3/4" Diameter, Keyed

Outlet port:

Side SAE 10



Max. torque 100 N·m


 1 Year
Warranty

 Free Ground
US Shipping

MAGISTER Gear Pump: 3/4" Diameter Straight Keyed Shaft, Aluminum Body, Cast Iron Flange, 1.25" Shaft Length

SKU	CUBIC INCH DISPLACEM.	MOUNTING FLANGE (CAST IRON)	MAX RPM	MAX PSI	GPM @ 2000 RPM	SHAFT TYPE	ROTATION	INLET PORT	OUTLET PORT	MATERIAL (COVERS)	LIST PRICE
HGP CI34K-A02-027R	0.27	SAE A - 2 bolt	4000	3600	2.33	3/4" Keyed	CW	SAE 12	SAE 10	Cast Iron	\$140
HGP CI34K-A02-027L	0.27	SAE A - 2 bolt	4000	3600	2.33	3/4" Keyed	CCW	SAE 12	SAE 10	Cast Iron	\$140
HGP CI34K-A02-038R	0.38	SAE A - 2 bolt	4000	3600	3.29	3/4" Keyed	CW	SAE 12	SAE 10	Cast Iron	\$142
HGP CI34K-A02-038L	0.38	SAE A - 2 bolt	4000	3600	3.29	3/4" Keyed	CCW	SAE 12	SAE 10	Cast Iron	\$142
HGP CI34K-A02-050R	0.5	SAE A - 2 bolt	3500	3600	4.32	3/4" Keyed	CW	SAE 12	SAE 10	Cast Iron	\$144
HGP CI34K-A02-050L	0.5	SAE A - 2 bolt	3500	3600	4.32	3/4" Keyed	CCW	SAE 12	SAE 10	Cast Iron	\$144
HGP CI34K-A02-061R	0.61	SAE A - 2 bolt	3500	3600	5.28	3/4" Keyed	CW	SAE 12	SAE 10	Cast Iron	\$146
HGP CI34K-A02-061L	0.61	SAE A - 2 bolt	3500	3600	5.28	3/4" Keyed	CCW	SAE 12	SAE 10	Cast Iron	\$146
HGP CI34K-A02-069R	0.69	SAE A - 2 bolt	3500	3600	5.97	3/4" Keyed	CW	SAE 12	SAE 10	Cast Iron	\$149
HGP CI34K-A02-069L	0.69	SAE A - 2 bolt	3500	3600	5.97	3/4" Keyed	CCW	SAE 12	SAE 10	Cast Iron	\$149
HGP CI34K-A02-076R	0.76	SAE A - 2 bolt	3500	3600	6.58	3/4" Keyed	CW	SAE 12	SAE 10	Cast Iron	\$152
HGP CI34K-A02-076L	0.76	SAE A - 2 bolt	3500	3600	6.58	3/4" Keyed	CCW	SAE 12	SAE 10	Cast Iron	\$152
HGP CI34K-A02-085R	0.85	SAE A - 2 bolt	3500	3600	7.35	3/4" Keyed	CW	SAE 12	SAE 10	Cast Iron	\$155
HGP CI34K-A02-085L	0.85	SAE A - 2 bolt	3500	3600	7.35	3/4" Keyed	CCW	SAE 12	SAE 10	Cast Iron	\$155
HGP CI34K-A02-097R	0.97	SAE A - 2 bolt	3000	3600	8.39	3/4" Keyed	CW	SAE 12	SAE 10	Cast Iron	\$158
HGP CI34K-A02-097L	0.97	SAE A - 2 bolt	3000	3600	8.39	3/4" Keyed	CCW	SAE 12	SAE 10	Cast Iron	\$158
HGP CI34K-A02-122R	1.22	SAE A - 2 bolt	3000	3000	10.56	3/4" Keyed	CW	SAE 12	SAE 10	Cast Iron	\$161
HGP CI34K-A02-122L	1.22	SAE A - 2 bolt	3000	3000	10.56	3/4" Keyed	CCW	SAE 12	SAE 10	Cast Iron	\$161
HGP CI34K-A02-137R	1.37	SAE A - 2 bolt	3000	2700	11.86	3/4" Keyed	CW	SAE 12	SAE 10	Cast Iron	\$166
HGP CI34K-A02-137L	1.37	SAE A - 2 bolt	3000	2700	11.86	3/4" Keyed	CCW	SAE 12	SAE 10	Cast Iron	\$166
HGP CI34K-A02-170R	1.7	SAE A - 2 bolt	2500	2100	14.71	3/4" Keyed	CW	SAE 12	SAE 10	Cast Iron	\$171
HGP CI34K-A02-170L	1.7	SAE A - 2 bolt	2500	2100	14.71	3/4" Keyed	CCW	SAE 12	SAE 10	Cast Iron	\$171

GEAR PUMPS

7/8" KEYED

SPECIFICATIONS

Displacement sizes:

From 0.97 to 2.74 cu.in/rev

Inlet port:

Side SAE 12, SAE 16

Mounting flange:

Standard SAE B - 2 bolts

Outlet port:

Side SAE 10 SAE 12

Shaft type:

3/4" Diameter, Keyed

Shaft type:

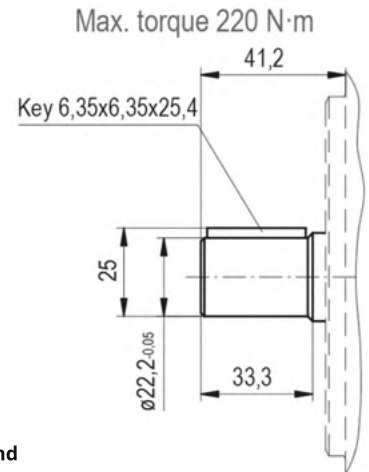
7/8" Diameter, Keyed



1 Year
Warranty



Free Ground
US Shipping



Magister Hydraulics Gear Pump 7/8" Keyed Shaft, Aluminum Body, Mounting Flange SAE B - 2 bolt; 1.625" Shaft Length

SKU	CUBIC INCH DISPLACEM.	MOUNTING FLANGE	MAX RPM	MAX PSI	GPM @ 2000 RPM	SHAFT TYPE	ROTATION	INLET PORT	OUTLET PORT	MATERIAL	LIST PRICE
HGP AL78K-B02-097R	0.97	SAE B - 2 bolt	3000	3300	8.39	7/8" Keyed	CW	SAE 12	SAE 10	Aluminum	\$184
HGP AL78K-B02-097L	0.97	SAE B - 2 bolt	3000	3300	8.39	7/8" Keyed	CCW	SAE 12	SAE 10	Aluminum	\$184
HGP AL78K-B02-116R	1.16	SAE B - 2 bolt	3000	3300	10	7/8" Keyed	CW	SAE 12	SAE 10	Aluminum	\$193
HGP AL78K-B02-116L	1.16	SAE B - 2 bolt	3000	3300	10	7/8" Keyed	CCW	SAE 12	SAE 10	Aluminum	\$193
HGP AL78K-B02-140R	1.4	SAE B - 2 bolt	3000	3300	12.12	7/8" Keyed	CW	SAE 12	SAE 10	Aluminum	\$198
HGP AL78K-B02-140L	1.4	SAE B - 2 bolt	3000	3300	12.12	7/8" Keyed	CCW	SAE 12	SAE 10	Aluminum	\$198
HGP AL78K-B02-152R	2.2	SAE B - 2 bolt	3000	3300	13.16	7/8" Keyed	CW	SAE 16	SAE 12	Aluminum	\$203
HGP AL78K-B02-152L	2.2	SAE B - 2 bolt	3000	3300	13.16	7/8" Keyed	CCW	SAE 16	SAE 12	Aluminum	\$203
HGP AL78K-B02-170R	1.7	SAE B - 2 bolt	3000	3300	14.71	7/8" Keyed	CW	SAE 16	SAE 12	Aluminum	\$209
HGP AL78K-B02-170L	1.7	SAE B - 2 bolt	3000	3300	14.71	7/8" Keyed	CCW	SAE 16	SAE 12	Aluminum	\$209
HGP AL78K-B02-183R	1.83	SAE B - 2 bolt	3000	3300	15.84	7/8" Keyed	CW	SAE 16	SAE 12	Aluminum	\$215
HGP AL78K-B02-183L	1.83	SAE B - 2 bolt	3000	3300	15.84	7/8" Keyed	CCW	SAE 16	SAE 12	Aluminum	\$215
HGP AL78K-B02-195R	1.95	SAE B - 2 bolt	3000	2900	16.88	7/8" Keyed	CW	SAE 16	SAE 12	Aluminum	\$220
HGP AL78K-B02-195L	1.95	SAE B - 2 bolt	3000	2900	16.88	7/8" Keyed	CCW	SAE 16	SAE 12	Aluminum	\$220
HGP AL78K-B02-220R	2.2	SAE B - 2 bolt	3000	2900	19.04	7/8" Keyed	CW	SAE 16	SAE 12	Aluminum	\$227
HGP AL78K-B02-220L	2.2	SAE B - 2 bolt	3000	2900	19.04	7/8" Keyed	CCW	SAE 16	SAE 12	Aluminum	\$227
HGP AL78K-B02-232R	2.32	SAE B - 2 bolt	2750	2500	20.08	7/8" Keyed	CW	SAE 16	SAE 12	Aluminum	\$233
HGP AL78K-B02-232L	2.32	SAE B - 2 bolt	2750	2500	20.08	7/8" Keyed	CCW	SAE 16	SAE 12	Aluminum	\$233
HGP AL78K-B02-244R	2.44	SAE B - 2 bolt	2500	2100	21.12	7/8" Keyed	CW	SAE 16	SAE 12	Aluminum	\$239
HGP AL78K-B02-244L	2.44	SAE B - 2 bolt	2500	2100	21.12	7/8" Keyed	CCW	SAE 16	SAE 12	Aluminum	\$239
HGP AL78K-B02-274R	2.74	SAE B - 2 bolt	2500	2100	23.72	7/8" Keyed	CW	SAE 16	SAE 12	Aluminum	\$245
HGP AL78K-B02-274L	2.74	SAE B - 2 bolt	2500	2100	23.72	7/8" Keyed	CCW	SAE 16	SAE 12	Aluminum	\$245



GEAR PUMPS

9 TOOTH SPLINE

SPECIFICATIONS

Displacement sizes:

From 0.27 to 1.7 cu.in/rev

Inlet port:

Side SAE 12

Mounting flange:

Standard SAE A - 2 bolts

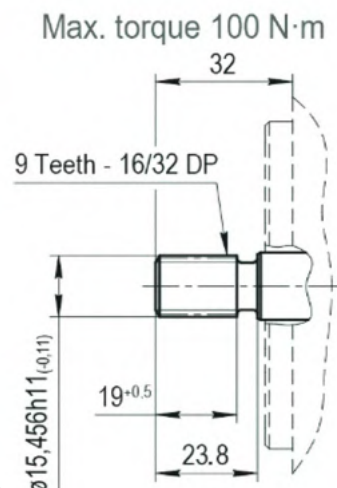
Outlet port:

Side SAE 10

Shaft type:

9-tooth Spline


 1 Year
Warranty

 Free Ground
US Shipping

MAGISTER Gear Pump: 9 Tooth Spline Shaft, Aluminum Body, Cast Iron Mounting Flange SAE A - 2 Bolt; 1.25" Shaft Length

SKU	CUBIC INCH DISPLACEMENT	MOUNTING FLANGE (CAST IRON)	MAX RPM	MAX PSI	GPM @ 2000 RPM	SHAFT TYPE	ROTATION	INLET PORT	OUTLET PORT	MATERIAL (COVERS)	LIST PRICE
HGP CI09S-A02-027R	0.27	SAE A - 2 bolt	4000	3600	2.33	9-tooth Spline	CW	SAE 12	SAE 10	Cast Iron	\$140
HGP CI09S-A02-027L	0.27	SAE A - 2 bolt	4000	3600	2.33	9-tooth Spline	CCW	SAE 12	SAE 10	Cast Iron	\$140
HGP CI09S-A02-038R	0.38	SAE A - 2 bolt	4000	3600	3.29	9-tooth Spline	CW	SAE 12	SAE 10	Cast Iron	\$142
HGP CI09S-A02-038L	0.38	SAE A - 2 bolt	4000	3600	3.29	9-tooth Spline	CCW	SAE 12	SAE 10	Cast Iron	\$142
HGP CI09S-A02-050R	0.5	SAE A - 2 bolt	3500	3600	4.32	9-tooth Spline	CW	SAE 12	SAE 10	Cast Iron	\$144
HGP CI09S-A02-050L	0.5	SAE A - 2 bolt	3500	3600	4.32	9-tooth Spline	CCW	SAE 12	SAE 10	Cast Iron	\$144
HGP CI09S-A02-061R	0.61	SAE A - 2 bolt	3500	3600	5.28	9-tooth Spline	CW	SAE 12	SAE 10	Cast Iron	\$146
HGP CI09S-A02-061L	0.61	SAE A - 2 bolt	3500	3600	5.28	9-tooth Spline	CCW	SAE 12	SAE 10	Cast Iron	\$146
HGP CI09S-A02-069R	0.69	SAE A - 2 bolt	3500	3600	5.97	9-tooth Spline	CW	SAE 12	SAE 10	Cast Iron	\$149
HGP CI09S-A02-069L	0.69	SAE A - 2 bolt	3500	3600	5.97	9-tooth Spline	CCW	SAE 12	SAE 10	Cast Iron	\$149
HGP CI09S-A02-076R	0.76	SAE A - 2 bolt	3500	3600	6.58	9-tooth Spline	CW	SAE 12	SAE 10	Cast Iron	\$152
HGP CI09S-A02-076L	0.76	SAE A - 2 bolt	3500	3600	6.58	9-tooth Spline	CCW	SAE 12	SAE 10	Cast Iron	\$152
HGP CI09S-A02-085R	0.85	SAE A - 2 bolt	3500	3600	7.35	9-tooth Spline	CW	SAE 12	SAE 10	Cast Iron	\$155
HGP CI09S-A02-085L	0.85	SAE A - 2 bolt	3500	3600	7.35	9-tooth Spline	CCW	SAE 12	SAE 10	Cast Iron	\$155
HGP CI09S-A02-097R	0.97	SAE A - 2 bolt	3000	3600	8.39	9-tooth Spline	CW	SAE 12	SAE 10	Cast Iron	\$158
HGP CI09S-A02-097L	0.97	SAE A - 2 bolt	3000	3600	8.39	9-tooth Spline	CCW	SAE 12	SAE 10	Cast Iron	\$158
HGP CI09S-A02-122R	1.22	SAE A - 2 bolt	3000	3000	10.56	9-tooth Spline	CW	SAE 12	SAE 10	Cast Iron	\$161
HGP CI09S-A02-122L	1.22	SAE A - 2 bolt	3000	3000	10.56	9-tooth Spline	CCW	SAE 12	SAE 10	Cast Iron	\$161
HGP CI09S-A02-137R	1.37	SAE A - 2 bolt	3000	2700	11.86	9-tooth Spline	CW	SAE 12	SAE 10	Cast Iron	\$166
HGP CI09S-A02-137L	1.37	SAE A - 2 bolt	3000	2700	11.86	9-tooth Spline	CCW	SAE 12	SAE 10	Cast Iron	\$166
HGP CI09S-A02-170R	1.7	SAE A - 2 bolt	2500	2100	14.71	9-tooth Spline	CW	SAE 12	SAE 10	Cast Iron	\$171
HGP CI09S-A02-170L	1.7	SAE A - 2 bolt	2500	2100	14.71	9-tooth Spline	CCW	SAE 12	SAE 10	Cast Iron	\$171

GEAR PUMPS

13 TOOTH SPLINE

SHAFT

SPECIFICATIONS

Displacement sizes:

From 0.27 to 1.7 cu.in/rev

Inlet port:

Side SAE 12

Mounting flange:

Standard SAE A - 2 bolts

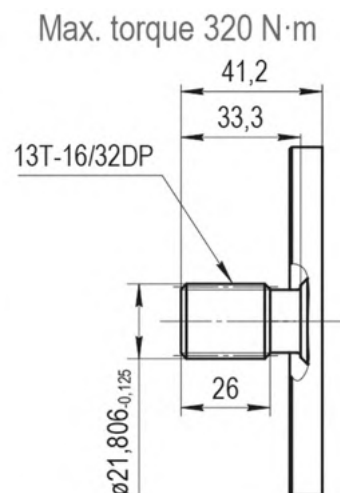
Outlet port:

Side SAE 10

Shaft type:

9-tooth Spline


 1 Year
Warranty

 Free Ground
US Shipping


Magister Hydraulics Gear Pump 13 Tooth Spline Shaft, Aluminum Body, Mounting Flange SAE B - 2 bolt; 1.625" Shaft Length

SKU	CUBIC INCH DISPLACEM.	MOUNTING FLANGE	MAX RPM	MAX PSI	GPM @ 2000 RPM	SHAFT TYPE	ROTATION	INLET PORT	OUTLET PORT	MATERIAL	LIST PRICE
HGP AL13S-B02-097R	0.97	SAE B - 2 bolt	3000	3300	8.39	13-tooth Spline	CW	SAE 12	SAE 10	Aluminum	\$184
HGP AL13S-B02-097L	0.97	SAE B - 2 bolt	3000	3300	8.39	13-tooth Spline	CCW	SAE 12	SAE 10	Aluminum	\$184
HGP AL13S-B02-116R	1.16	SAE B - 2 bolt	3000	3300	10	13-tooth Spline	CW	SAE 12	SAE 10	Aluminum	\$193
HGP AL13S-B02-116L	1.16	SAE B - 2 bolt	3000	3300	10	13-tooth Spline	CCW	SAE 12	SAE 10	Aluminum	\$193
HGP AL13S-B02-140R	1.4	SAE B - 2 bolt	3000	3300	12.12	13-tooth Spline	CW	SAE 12	SAE 10	Aluminum	\$198
HGP AL13S-B02-140L	1.4	SAE B - 2 bolt	3000	3300	12.12	13-tooth Spline	CCW	SAE 12	SAE 10	Aluminum	\$198
HGP AL13S-B02-152R	1.52	SAE B - 2 bolt	3000	3300	13.16	13-tooth Spline	CW	SAE 16	SAE 12	Aluminum	\$203
HGP AL13S-B02-152L	1.52	SAE B - 2 bolt	3000	3300	13.16	13-tooth Spline	CCW	SAE 16	SAE 12	Aluminum	\$203
HGP AL13S-B02-170R	1.7	SAE B - 2 bolt	3000	3300	14.71	13-tooth Spline	CW	SAE 16	SAE 12	Aluminum	\$209
HGP AL13S-B02-170L	1.7	SAE B - 2 bolt	3000	3300	14.71	13-tooth Spline	CCW	SAE 16	SAE 12	Aluminum	\$209
HGP AL13S-B02-183R	1.83	SAE B - 2 bolt	3000	3300	15.84	13-tooth Spline	CW	SAE 16	SAE 12	Aluminum	\$215
HGP AL13S-B02-183L	1.83	SAE B - 2 bolt	3000	3300	15.84	13-tooth Spline	CCW	SAE 16	SAE 12	Aluminum	\$215
HGP AL13S-B02-195R	1.95	SAE B - 2 bolt	3000	2900	16.88	13-tooth Spline	CW	SAE 16	SAE 12	Aluminum	\$220
HGP AL13S-B02-195L	1.95	SAE B - 2 bolt	3000	2900	16.88	13-tooth Spline	CCW	SAE 16	SAE 12	Aluminum	\$220
HGP AL13S-B02-220R	2.2	SAE B - 2 bolt	3000	2900	19.04	13-tooth Spline	CW	SAE 16	SAE 12	Aluminum	\$227
HGP AL13S-B02-220L	2.2	SAE B - 2 bolt	3000	2900	19.04	13-tooth Spline	CCW	SAE 16	SAE 12	Aluminum	\$227
HGP AL13S-B02-232R	2.32	SAE B - 2 bolt	2750	2500	20.08	13-tooth Spline	CW	SAE 16	SAE 12	Aluminum	\$233
HGP AL13S-B02-232L	2.32	SAE B - 2 bolt	2750	2500	20.08	13-tooth Spline	CCW	SAE 16	SAE 12	Aluminum	\$233
HGP AL13S-B02-244R	2.44	SAE B - 2 bolt	2500	2100	21.12	13-tooth Spline	CW	SAE 16	SAE 12	Aluminum	\$239
HGP AL13S-B02-244L	2.44	SAE B - 2 bolt	2500	2100	21.12	13-tooth Spline	CCW	SAE 16	SAE 12	Aluminum	\$239
HGP AL13S-B02-274R	2.74	SAE B - 2 bolt	2500	2100	23.72	13-tooth Spline	CW	SAE 16	SAE 12	Aluminum	\$245
HGP AL13S-B02-274L	2.74	SAE B - 2 bolt	2500	2100	23.72	13-tooth Spline	CCW	SAE 16	SAE 12	Aluminum	\$245

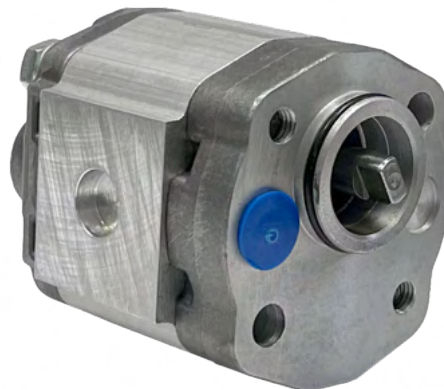


GEAR PUMPS

FLAT TANG DRIVE

SPECIFICATIONS

CID(Cubic cm Displacement):	1.2 - 2.8
Shaft Type:	Flat Tang
Max RPM:	4000
GPM @3000 RPM:	0.95 - 2.22
Rotation Direction:	Counter-clockwise (left)
Rated PSI:	3600
Max PSI:	3900
Inlet Port:	NPT 3/8
Outlet Port:	Front

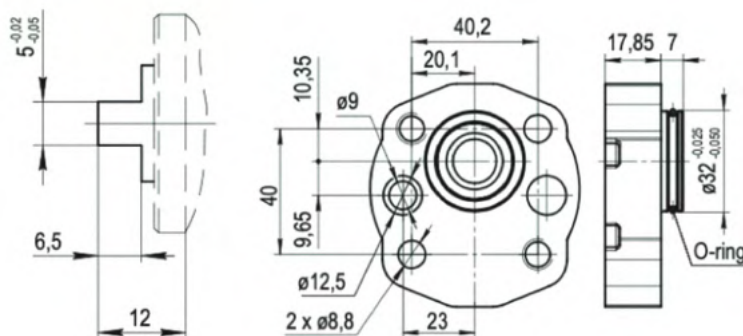


MAGISTER Mini Gear Pump: Flat Tang Shaft, Aluminum Body, Front Outlet & Rear Inlet; Group 1 Pumps for Power Packs

SKU	CUBIC INCH DISPLACEM.	CUBIN CM DISPLACEM.	MOUNTING FLANGE	MAX RPM	RATED PSI	MAX PSI	GPM @ 3000 RPM	SHAFT TYPE	ROTATION	INLET PORT	OUTLET PORT	MATERIAL (COVERS)	WEIGHT (LBS)	LIST PRICE
HGP AL-TDS-1K-CC12L	0.07	1.2	Through Bolt	4000	3600	3900	1	Flat Tang	CCW	NPT 3/8	Front	Aluminum	3	\$94
HGP AL-TDS-1K-CC16L	0.09	1.6	Through Bolt	4000	3600	3900	1	Flat Tang	CCW	NPT 3/8	Front	Aluminum	3	\$95
HGP AL-TDS-1K-CC21L	0.12	2.1	Through Bolt	4000	3600	3900	2	Flat Tang	CCW	NPT 3/8	Front	Aluminum	3	\$96
HGP AL-TDS-1K-CC25L	0.15	2.5	Through Bolt	4000	3600	3900	2	Flat Tang	CCW	NPT 3/8	Front	Aluminum	3	\$97
HGP AL-TDS-1K-CC28L	0.17	2.8	Through Bolt	4000	3600	3900	2	Flat Tang	CCW	NPT 3/8	Front	Aluminum	3	\$98

Application: for small hydraulic power units

Max. torque 20 N·m



Free Ground
US Shipping



Made in
Europe



1 Year
Warranty

GEAR PUMPS FOR JOHN DEERE



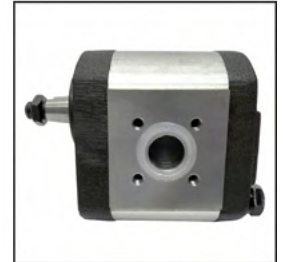
Free Ground
US Shipping



Made in
Europe



1 Year
Warranty



MAGISTER Gear Pump Aftermarket replacements for John Deere

SKU	CUBIC INCH DISPLACEM.	ORIGINAL PART #	DIRECT FIT FOR EQUIPMENT	ROTATION	LIST PRICE
JD AL15149	0.671	AL15149	John Deere 500, John Deere 510, John Deere 700, John Deere 710, John Deere 710D	CCW	\$119
JD AL156335	1.708	AL156335	6010, SE6010, 6020, SE6020, SE6100, 6110, SE6110, 6120, SE6120, 6130, 6110J, 6125J, 6130J, SE6200, 6210, SE6210, 6220, SE6220, 6215, 6230, 6300, SE6300, 6310, SE6310, 6320, SE6320, 6330, SE6400, 6405, 6410, SE6410, 6415, 6420, SE6420, 6420S, 6425, 6430, 6500, 6510, SE6510, 6520, SE6520, 6530, 6600, 6605, 6610, SE6610, 6615, 6620, SE6620, 6630, 6715, 6830, 6930, 7130, 7230, 7330, 7500, 7505	CW	\$255
JD RE223233	1.16+0.671	RE223233	403, 5038D, 5039D, 5045D, 5045E, 5050D, 5050E, 5055D, 5055E, 5060E, 5065E, 5075E, 5075EF, 5103, 5203, 5203S, 5204, 5403, 5503, 5610, 5B-550, 5B-550-1, 5B-554, 5B-554- 1, 5B-650, 5B-650-1, 5B-654, 5B-654-1, 5B-700, 5B-700- 1, 5B-704 5B-704-1, 5B-750, 5B-750-1, 5B-754, 5B-754-1	CCW	\$339
JD RE73947	1.7+0.732	RE73947	5076E, 5076EL, 5076EF, 5082E, 5083E, 5090E, 5090EL, 5090EH, 5093E, 5101E, 5403, 5603, 5605, 5705, 5410, 5510, 5510N, 5415, 5415H, 5515, 5515F, 5515V, 5615, 5615F, 5615V, 5715, 5715HC, 5420, 5420N, 5520, 5520N, 5425, 5425N, 5625, 5725, 5725N	CCW	\$599
JD RE279132	1.526+0.85	RE279132	6100D, 6110D, 6115D, 6125D, 6130D, 6140D, 6110B	CCW	\$425

GEAR PUMPS FOR MASSEY FERGUSON



Free Ground
US Shipping



Made in
Europe



1 Year
Warranty



MAGISTER Gear Pump Aftermarket Replacements for Massey Ferguson

SKU	CUBIC INCH DISPLACEM.	ORIGINAL PART #	DIRECT FIT FOR EQUIPMENT	ROTATION	LIST PRICE
MF 897147M95	0.385	897147M95	165, 168, 175, 175S, 178, 185, 188, 265, 275, 285, 290, 565, 575, 590, 30D, 50, 50B, MKII	CCW	\$169
MF 3534941M91	0.671	3534941M91	1007, 367CF, 373, 374AP, 374AP(X), 374AQ, 374F, 374FP, 374FP(X), 374FQ, 374GE, 374GE(X), 374H, 374S, 374SP, 374SP(X), 374SQ, 374V, 374VQ, 377, 383, 384AP, 384AP(X), 384AQ, 384F, 384FP, 384FP(X), 384FQ, 384GE, 384GE(X), 384S, 384SP, 384SP(X), 384SQ, 384V, 384VQ, 387, 393, 394AP, 394AP(X), 394AQ, 394C, 394F, 394FP, 394FP(X), 394FQ, 394GE, 394GE(X), 394H, 394S, 394SP, 394SP(X), 394SQ, 394TAQ, 397	CCW	\$111
MF 3539857M91	0.671	3539857M91	174, 174C, 174F, 174S, 174V, 184, 184F, 184S, 194, 194C, 194F, 194S, 273, 274, 274C, 274CF, 274S, 274SK, 283, 284, 284S, 293, 294, 294C, 294S, 373 (->P04065), 373LX (->P06076), 373S (->P06076), 377 (->P04065), 383 (->P06076), 383LX (->P06076), 383S (->P06076), 387 (->P04065), 393 (->P06076), 393LX (->P06076), 393S (->P06076), 393TLX (->P06076), 394C, 397 (->P04065)	CW	\$122
MF 3816909M91	0.854+0.61	3816909M91	4225, 4225HV, 4235, 4235 (USA), 4235HV, 4235HV (USA), 4240, 4245, 4245HV, 4255, 4255HV, 4260, 4265, 4270, 4325, 4325HV, 4335, 4335HV, 4345, 4345HV, 4355, 4355HV, 4360, 4365 4370,	CW	\$339
MF 3816910M91	1.16+0.854	3816910M91	4215, 4220, 4225, 4225HV, 4235, 4235 (USA), 4235HV, 4235HV (USA), 4240, 4245, 4245HV, 4255, 4255HV, 4260, 4265, 4315, 4320, 4325, 4325HV, 4335, 4335HV, 4345, 4345HV, 4355, 4355HV, 4365	CW	\$339
MF 523090M91	0.366	523090M91	Tractors: 30 (diesel), 40, 50, 50A, 65 (s/n 685996-later Deisel), 165 (diesel s/n 9A112205-later), 255 (Engine: A-212 Gas or AD236 Deisel), 265, 3165 (diesel), Industrial: 40, 203, 204, 302, 304, 356,	CW	\$249

GEAR PUMPS FOR BOBCAT



Magister Gear Pump Aftermarket Replacements for Bobcat

SKU	CUBIC INCH DISPLACEM.	ORIGINAL PART #	DIRECT FIT FOR EQUIPMENT	ROTATION	LIST PRICE
BC A20.5L36836	1.22	A20.5L36 836	Skidsteer Bobcat 733,751, 753,763,773	CCW	\$178
BC 6650678	0.976	6650678	Skidsteer Bobcat 509,616,628, 653,751,753, 753L, 763, 773, 775	CCW	\$180



Free Ground
US Shipping



Made in
Europe



1 Year
Warranty

GEAR PUMPS FOR KUBOTA



Magister Gear Pump Aftermarket Replacements for Kubota

SKU	CUBIC INCH DISPLACEM.	ORIGINAL PART #	DIRECT FIT FOR EQUIPMENT	ROTATION	LIST PRICE
KB KP0588ATSS	0.61	35110-76101 34150-36103 34150-36110 35180-36100 37150-36110 70000-36100	Kubota L175, L185, L185F, L225, L245, L245DT, L245F, L245H, L295, L295DT, L295F, L1500, L1501, L2000, L2201, L3001	CCW	\$109
KB 38240-76100	0.549	38240-76100	Kubota L235, L275, L2402, L2202, L2602, L4202, Mitsubishi MT250, MT300D	CCW	\$119

CONTROL VALVES



Magister hydraulic control valves are carefully designed to regulate and manage the flow, pressure, and direction of hydraulic fluid within hydraulic systems. We have various options available for control valves, such as monoblock control valves, log splitter control valves, solenoid control valves, etc.

Our control valves are compact, lightweight, durable, and leak-proof. Magister Hydraulics control valves are designed to manage and direct hydraulic oil flow between hydraulic pumps, hydraulic cylinders, motors, tanks, etc. Made in Europe utilizing American standards, can operate under temperatures anywhere from -40F and up to 140F.



STOCK OPTIONS:

- **Operating Temperature:** -40F...+140F
- **Hydraulic liquid:** Mineral-based oil/ hydraulic oil
- **Adjustable relief:** Up to 3600 PSI
- **Assembly:** Complete with handles
- **Spools:** From 1 to 6
- **Material:** Cast Iron
- **Ports:** SAE O-ring boss

CUSTOM OPTIONS:

Magister Hydraulics manufactures custom control valves of any complexity. All custom control valves we build are made according to customer requirements and needs. All custom control valves require a minimum quantity of 50 items per order.

Monoblock and sectional options are available

Flow from 11 GPM to 32 GPM

Spools: from 1 and up to 6-8+

Different spools can be made for multiple functions

Manually and electrically operated 12V

Joystick option available

Custom applications available

DIRECTIONAL CONTROL VALVES

SPECIFICATIONS

Flow:	1.2/1.6/2.1/2.5/2.8
No. of Spools:	1-6
Spool Action:	3-pos. Spring Center
Spool Type:	Motor center 4-way 3 pos, 4-way 3 pos Open Center
Ports:	SAE 8, SAE 10, SAE12, SAE 16



Free Ground US
Shipping



Made in
Europe



1 Year
Warranty



Directional Control Valves - up to 3600 PSI; Open Center

SKU	# OF SPOOLS	GPM	PSI	SPOOL TYPE	SPOOL ACTION	INLET PORT	OUTLET PORT	WORKING PORTS	WEIGHT LBS	LIST PRICE
HCV 1x13	1	13	3600	4-way 3 pos Open Center	3-pos. Spring Center	SAE 10	SAE 10	SAE 8	6	\$105
HCV 2x13	2	13	3600	4-way 3 pos Open Center	3-pos. Spring Center	SAE 10	SAE 10	SAE 8	10	\$139
HCV 3x13	3	13	3600	4-way 3 pos Open Center	3-pos. Spring Center	SAE 10	SAE 10	SAE 8	13	\$205
HCV 4x13	4	13	3600	4-way 3 pos Open Center	3-pos. Spring Center	SAE 10	SAE 10	SAE 8	16	\$257
HCV 5x13	5	13	3600	4-way 3 pos Open Center	3-pos. Spring Center	SAE 10	SAE 10	SAE 8	20	\$319
HCV 6x13	6	13	3600	4-way 3 pos Open Center	3-pos. Spring Center	SAE 10	SAE 10	SAE 8	25	\$348

HCV 1x21	1	21	3600	4-way 3 pos Open Center	3-pos. Spring Center	SAE 10	SAE 12	SAE 10	9	\$139
HCV 2x21	2	21	3600	4-way 3 pos Open Center	3-pos. Spring Center	SAE 10	SAE 12	SAE 10	16	\$205
HCV 3x21	3	21	3600	4-way 3 pos Open Center	3-pos. Spring Center	SAE 10	SAE 12	SAE 10	22	\$282
HCV 4x21	4	21	3600	4-way 3 pos Open Center	3-pos. Spring Center	SAE 10	SAE 12	SAE 10	27	\$347

HCV 1x32	1	32	3600	4-way 3 pos Open Center	3-pos. Spring Center	SAE 16	SAE 16	SAE 16	31	\$279
HCV 2x32	2	32	3600	4-way 3 pos Open Center	3-pos. Spring Center	SAE 16	SAE 16	SAE 16	43	\$399

Directional Control Valves - up to 3600 PSI; Motor Center

SKU	# OF SPOOLS	GPM	PSI	SPOOL TYPE	SPOOL ACTION	INLET PORT	OUTLET PORT	WORKING PORTS	WEIGHT LBS	LIST PRICE
HCV 1x13-MC	1	13	3600	4-way 3 pos Motor Center	3-pos. Spring Center	SAE 10	SAE 10	SAE 8	6	\$105
HCV 2x13-MC	2	13	3600	4-way 3 pos Motor Center	3-pos. Spring Center	SAE 10	SAE 10	SAE 8	10	\$139

LOG SPLITTER CONTROL VALVES



HCV-LS	Log Splitter Control Valves - up to 3600 PSI; Press Release Detent									
SKU	# OF SPOOLS	GPM	PSI	SPOOL TYPE	SPOOL ACTION	INLET PORT	OUTLET PORT	WORKING PORTS	WEIGHT LBS	LIST PRICE
HCV-LSS 1x21	1	21	3600	4-way 4 pos Tandem Center	4-pos with detent	3/4-14 NPTF	3/4-14 NPTF	1/2-12 NPTF	10	\$129
HCV-LSH 1x21	1	21	3600	4-way 4 pos Tandem Center	4-pos with detent high speed	3/4-14 NPTF	3/4-14 NPTF	1/2-12 NPTF	10	\$160



Free Ground
US Shipping

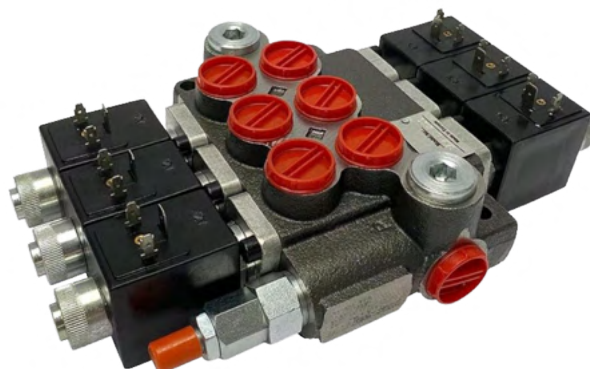


Made in
Europe



1 Year
Warranty

SOLENOID CONTROL VALVES



HCV-S	Solenoid Control Valves 12VDC - up to 3600 PSI; Motor Center									
SKU	# OF SPOOLS	GPM	PSI	SPOOL TYPE	SPOOL ACTION	INLET PORT	OUTLET PORT	WORKING PORTS	WEIGHT LBS	LIST PRICE
HCV-S 1x13	1	13	3600	4-way 3 pos Open Center	3-pos. Spring Center	SAE 10	SAE 10	SAE 8	7	\$195
HCV-S 2x13	2	13	3600	4-way 3 pos Open Center	3-pos. Spring Center	SAE 10	SAE 10	SAE 8	12	\$335
HCV-S 3x13	3	13	3600	4-way 3 pos Open Center	3-pos. Spring Center	SAE 10	SAE 10	SAE 8	17	\$499
HCV-S 4x13	4	13	3600	4-way 3 pos Open Center	3-pos. Spring Center	SAE 10	SAE 10	SAE 8	22	\$649

HOSE ASSEMBLIES



Magister Hydraulics manufactures high-quality hose assemblies. It includes various options in terms of diameters, fitting types, etc. These assemblies are constructed to withstand high pressures, varying temperatures, and harsh environments, ensuring the seamless flow of hydraulic power to different components.

STOCK OPTIONS:

HOSE DIAMETER: 1/2", 3/8", 1/4"	FITTING TYPE: Female JIC Swivel, Male NPT Straight	LENGTH: 18"-72"	PRESSURE (PSI): 4800	BEND RADIUS: 5.1"
---	--	---------------------------	--------------------------------	-----------------------------



CUSTOM OPTIONS:

Diameters from 1/4" up to 1"	Multiple hose radius options	Custom lengths
Custom threads male and female, JIC, NPT, SAE, etc.	Packages with adapters are available	
Options for low, medium, high pressure applications	MOQ: 50+ each	

HOSE ASSEMBLIES

1/4"

SPECIFICATIONS

Hose Diameter:	1/4"
Fitting Type:	Female JIC/Male NPT Straight
Length:	18"-72"
Pressure (PSI):	4800 PSI
Bend Radius:	5.1"



Free Ground US
Shipping

Made in
Europe

1 Year Warranty

HHA	1/4" MAGISTER Hydraulic Hose Assemblies - 2-wire Steel Braid Hoses PREMIUM									
SKU	HOSE DIA INSIDE	THREAD	FITTING SIZE	FITTING STYLE	LENGTH (INCH)	PRESSURE PSI (MAX)	BENT RADIUS	TEMP (F) RANGE	WEIGHT LBS	LIST PRICE
HHA-D04-04-FJS-18	1/4"	JIC	1/4"	Female Straight Swivel	18	4800	5.1"	-40F to+198F	2	\$11
HHA-D04-04-FJS-24	1/4"	JIC	1/4"	Female Straight Swivel	24	4800	5.1"	-40F to + 198F	2	\$13
HHA-D04-04-FJS-30	1/4"	JIC	1/4"	Female Straight Swivel	30	4800	5.1"	-40F to+198F	3	\$15
HHA-D04-04-FJS-36	1/4"	JIC	1/4"	Female Straight Swivel	36	4800	5.1"	-40F to + 198F	3	\$18
HHA-D04-04-FJS-48	1/4"	JIC	1/4"	Female Straight Swivel	48	4800	5.1"	-40F to+198F	3	\$21
HHA-D04-04-FJS-60	1/4"	JIC	1/4"	Female Straight Swivel	60	4800	5.1"	-40F to + 198F	3	\$24
HHA-D04-04-FJS-72	1/4"	JIC	1/4"	Female Straight Swivel	72	4800	5.1"	-40F to+198F	5	\$27

HHA-D04-04-MNS-18	1/4"	NPTF	1/4"	Male Straight	18	4800	5.1"	-40F to+198F	2	\$11
HHA-D04-04-MNS-24	1/4"	NPTF	1/4"	Male Straight	24	4800	5.1"	-40F to + 198F	2	\$11
HHA-D04-04-MNS-30	1/4"	NPTF	1/4"	Male Straight	30	4800	5.1"	-40F to+198F	3	\$17
HHA-D04-04-MNS-36	1/4"	NPTF	1/4"	Male Straight	36	4800	5.1"	40F to + 198F	3	\$19
HHA-D04-04-MNS-48	1/4"	NPTF	1/4"	Male Straight	48	4800	5.1"	-40F to+198F	3	\$22
HHA-D04-04-MNS-60	1/4"	NPTF	1/4"	Male Straight	60	4800	5.1"	-40F to + 198F	4	\$25
HHA-D04-04-MNS-72	1/4"	NPTF	1/4"	Male Straight	72	4800	5.1"	-40F to+198F	5	\$28

HOSE ASSEMBLIES

3/8"

SPECIFICATIONS

Hose Diameter:	3/8"
Fitting Type:	Female JIC/Male NPT Straight
Length:	18"-72"
Pressure (PSI):	4800 PSI
Max Bent Radius:	5.1"



Free Ground US
Shipping



Made in
Europe



1 Year Warranty

HHA	3/8" MAGISTER Hydraulic Hose Assemblies - 2-wire Steel Braid Hoses PREMIUM									
SKU	HOSE DIA INSIDE	THREAD	FITTING SIZE	FITTING STYLE	LENGTH (INCH)	PRESSURE PSI (MAX)	BENT RADIUS	TEMP (F) RANGE	WEIGHT LBS	LIST PRICE
HHA-D06-06-FJS-18	3/8"	JIC	3/8"	Female Straight Swivel	18	4800	5.1"	-40 to +212	2	\$15
HHA-D06-06-FJS-24	3/8"	JIC	3/8"	Female Straight Swivel	24	4800	5.1"	-40 to +212	2	\$16
HHA-D06-06-FJS-30	3/8"	JIC	3/8"	Female Straight Swivel	30	4800	5.1"	-40 to +212	3	\$17
HHA-D06-06-FJS-36	3/8"	JIC	3/8"	Female Straight Swivel	36	4800	5.1"	-40 to +212	3	\$19
HHA-D06-06-FJS-48	3/8"	JIC	3/8"	Female Straight Swivel	48	4800	5.1"	-40 to +212	3	\$22
HHA-D06-06-FJS-60	3/8"	JIC	3/8"	Female Straight Swivel	60	4800	5.1"	-40 to +212	4	\$25
HHA-D06-06-FJS-72	3/8"	JIC	3/8"	Female Straight Swivel	72	4800	5.1"	-40 to +212	4	\$28

HHA-D06-06-MNS-18	3/8"	NPTF	3/8"	Male Straight	18	4800	5.1"	-40 to +212	2	\$15
HHA-D06-06-MNS-24	3/8"	NPTF	3/8"	Male Straight	24	4800	5.1"	-40 to +212	2	\$16
HHA-D06-06-MNS-30	3/8"	NPTF	3/8"	Male Straight	30	4800	5.1"	-40 to +212	3	\$17
HHA-D06-06-MNS-36	3/8"	NPTF	3/8"	Male Straight	36	4800	5.1"	-40 to +212	3	\$19
HHA-D06-06-MNS-48	3/8"	NPTF	3/8"	Male Straight	48	4800	5.1"	-40 to +212	3	\$22
HHA-D06-06-MNS-60	3/8"	NPTF	3/8"	Male Straight	60	4800	5.1"	-40 to +212	4	\$25
HHA-D06-06-MNS-72	3/8"	NPTF	3/8"	Male Straight	72	4800	5.1"	-40 to +212	4	\$28

HOSE ASSEMBLIES

1/2"

SPECIFICATIONS

Hose Diameter:	1/2"
Fitting Type:	Female JIC Swivel/Male NPT Straight
Length:	18"-72"
Pressure (PSI):	4800
Bend Radius:	5.1"



Free Ground US
Shipping

Made in
Europe

1 Year Warranty

HHA	1/2" MAGISTER Hydraulic Hose Assemblies - 2-wire Steel Braid Hoses PREMIUM									
SKU	HOSE DIA INSIDE	THREAD	FITTING SIZE	FITTING STYLE	LENGTH (INCH)	PRESSURE PSI (MAX)	BENT RADIUS	TEMP (F) RANGE	WEIGHT LBS	LIST PRICE
HHA-D08-08-FJS-18	1/2"	JIC	1/2"	Female Straight Swivel	18	4800	5.1"	-40 to +212	2	\$15
HHA-D08-08-FJS-24	1/2"	JIC	1/2"	Female Straight Swivel	24	4800	5.1"	-40 to +212	2	\$17
HHA-D08-08-FJS-30	1/2"	JIC	1/2"	Female Straight Swivel	30	4800	5.1"	-40 to +212	3	\$18
HHA-D08-08-FJS-36	1/2"	JIC	1/2"	Female Straight Swivel	36	4800	5.1"	-40 to +212	3	\$20
HHA-D08-08-FJS-48	1/2"	JIC	1/2"	Female Straight Swivel	48	4800	5.1"	-40 to +212	3	\$23
HHA-D08-08-FJS-60	1/2"	JIC	1/2"	Female Straight Swivel	60	4800	5.1"	-40 to +212	4	\$26
HHA-D08-08-FJS-72	1/2"	JIC	1/2"	Female Straight Swivel	72	4800	5.1"	-40 to +212	4	\$29

HHA-D08-08-MNS-18	1/2"	NPTF	1/2"	Male Straight	18	4800	5.1"	-40 to +212	2	\$15
HHA-D08-08-MNS-24	1/2"	NPTF	1/2"	Male Straight	24	4800	5.1"	-40 to +212	2	\$17
HHA-D08-08-MNS-30	1/2"	NPTF	1/2"	Male Straight	30	4800	5.1"	-40 to +212	3	\$18
HHA-D08-08-MNS-36	1/2"	NPTF	1/2"	Male Straight	36	4800	5.1"	-40 to +212	3	\$20
HHA-D08-08-MNS-48	1/2"	NPTF	1/2"	Male Straight	48	4800	5.1"	-40 to +212	3	\$23
HHA-D08-08-MNS-60	1/2"	NPTF	1/2"	Male Straight	60	4800	5.1"	-40 to +212	4	\$26
HHA-D08-08-MNS-72	1/2"	NPTF	1/2"	Male Straight	72	4800	5.1"	-40 to +212	4	\$29

HYDRAULIC ACCESSORIES

Magister Hydraulic has a stock of repair parts such as seals, hydraulic cylinder pins and bushings, plugs, detent kits, flow dividers and fittings. All repair parts are of high quality. The compatibility is guaranteed only for Magister Hydraulics products.

CYLINDER SEAL KITS



Magister Hydraulics Cylinder Seal Kits

SKU	BORE (INCH)	ROD Ø (INCH)	WEIGHT LBS	LIST PRICE
CRK 1.5x1	1.5	1	1	\$14
CRK 1.75x1	1.75	1	1	\$15
CRK 2x1.125	2	1.125	1	\$16
CRK 2x1.25	2	1.25	1	\$17
CRK 2.5x1.125	2.5	1.125	1	\$18
CRK 2.5x1.25	2.5	1.25	1	\$19
CRK 2.5x1.5	2.5	1.5	1	\$20
CRK 3x1.25	3	1.25	1	\$22
CRK 3x1.5	3	1.5	1	\$23
CRK 3.5x1.75	3.5	1.75	1	\$26
CRK 4x1.75	4	1.75	1	\$27
CRK 4x2	4	2	1	\$29
CRK 5x2	5	2	1	\$35
CRK 5x2.5	5	2.5	1	\$37
CRK 6x3	6	3	1	\$50

PIVOT PINS



Magister Hydraulics Pivot Pins

SKU	CLIP HOLE DIAMETER	HEAD DIAMETER	PIN DIAMETER	WEIGHT LBS	LIST PRICE
SPP 075x60	0.197"	1"	0.75"	1	\$9
SPP 100x30	n/a	n/a	1"	0.8	\$8
SPP 100x40	0.24"	n/a	1"	1	\$10
SPP 100x70	0.25"	1.25"	1"	2	\$12
SPP 125x85	0.315"	1.5"	1.25"	3	\$15
SPP 150x85	0.315"	1.8"	1.5"	5	\$18

BUSHINGS


Magister Hydraulics Bushings

SKU	MATERIAL	OUTSIDE DIAMETER	INSIDE DIAMETER	WEIGHT LBS	LIST PRICE
SBR 100x075	Steel	1"	n/a	0.1	\$4.50
BBR 100x087	Bronze	1"	0.875"	0.8	\$4
BBR 112x100	Bronze	1.125"	1"	0.25	\$4
BBR 118x100	Bronze	1.188"	1"	0.25	\$7
SBR 125x100	Steel	1.25"	n/a	0.2	\$5
SBR 150x125	Steel	1.5"	n/a	0.3	\$5.50
SBR 175x150	Steel	1.75"	n/a	0.5	\$7

POWER BEYOND PLUGS


Magister Hydraulics Power Beyond Plugs

SKU	MATERIAL	MALE THREAD	FEMALE THREAD	WEIGHT LBS	LIST PRICE
PB-HCV-13	Carbon Steel	BSPP 1/2	SAE 10	0.8	\$21
PB-HCV-21	Carbon Steel	BSPP 3/4	SAE 12	1	\$22
PB-HCV-32	Carbon Steel	M36x1.5	BSPP 1	1	\$24

DENTENT KITS


DC-HCV Dentent Kits Directional Control Vavles

SKU	GPM	PSI	COMPATIBILITY	Body	PORT	WEIGHT LBS	LIST PRICE
DK-HCV-13	13	3600	HCV*x13,HCV-S*x13	Aluminum	SAE 10	1	\$21
DK-HCV-21	21	3600	HCV*x13,HCV-S*x21	Aluminum	SAE 12	1	\$22
DK-HCV-32	32	3600	HCV*x13,HCV-S*x32	Aluminum	SAE 16	1	\$23

HYDRAULIC STEEL FLOW DIVIDER

Hydraulic Steel Flow Divider

SKU	Min. Flow	Max. Flow	Pressure	Ports	Seals	Material	List Price
HV-FD-10-20-SAE6	2.6 GPM	5.2 GPM	3600 PSI	SAE 6	Buna-N	Zinc plated steel	\$179




WARRANTY

- ◆ Unless otherwise specified, Magister Hydraulics warrants products manufactured by Magister Hydraulics for a period of one (2) two years from the date of purchase against operational failure, solely to the extent caused by defective materials or workmanship, provided that (a) such failure occurs during use of the product in conformance with the product specifications provided by Magister Hydraulics and (b) there has been no disassembly, damage during shipment or by abuse, misuse, misapplication, maintenance, alteration, or improper installation, maintenance, or repair of the product.
- ◆ Warranty coverage is conditioned upon the customer (a) advising Magister Hydraulics in writing of the warranty claim within fifteen (15) days of the alleged operational failure, (b) complying with all applicable procedures and instructions from Magister Hydraulics regarding the return of the product, (c) providing to Magister Hydraulics a complete written report of the circumstances of the claimed operational failure of the product, and (d) providing Magister Hydraulics with a reasonable time to inspect the product and investigate the claim. The bent rod is not covered by the Magister Hydraulics warranty!
- ◆ Magister Hydraulics' only obligation under this limited warranty shall be as follows: If Magister Hydraulics determines, in its sole judgment, that an operational failure has occurred in a product manufactured by Magister Hydraulics, that the product was being used properly, and that the operational failure was caused solely by defective materials or workmanship, Magister Hydraulics will, at its sole option, either refund the price paid by the customer for the product or replace the product or part and pay any shipping charges incurred as a result thereof, the lowest round-trip transportation charges from Magister Hydraulics' customer's location to the designated Magister Hydraulics location and return. An inspection fee, plus shipping and handling, will apply for all returns, not due to a manufacturing defect.
- ◆ Magister Hydraulics does not warrant or provide engineering advice as to the suitability of any product for a customer's application or use. The customer is solely responsible for determining whether any product meets the customer's needs and for compliance with all applicable laws, ordinances, regulations, rules, and standards relating to the installation, maintenance, and use of the products.
- ◆ The foregoing constitutes the exclusive remedy of the customer and the exclusive liability of Magister Hydraulics. This warranty is exclusive and in lieu of all other warranties, oral or written, expressed or implied. Any warranty of merchantability or fitness for a particular purpose is specifically excluded and disclaimed and shall not apply under any circumstances. The sale of Magister Hydraulics products under any other warranty or guarantee is not authorized.
- ◆ Many products sold by Magister Hydraulics are manufactured by third parties and warranted by their manufacturers. Any third-party warranty for any item in Magister Hydraulics' printed catalog or website may be obtained from: Magister Hydraulics 45 Montgomery st, Belleville, New Jersey 07109, USA.
- ◆ Any product sold by Magister Hydraulics that is not manufactured by Magister Hydraulics shall be sold "as-is" and "with all faults." As to any such product, Magister Hydraulics excludes and disclaims all warranties, whether express or implied, written or oral, any and all warranties of merchantability or fitness for a particular purpose or measure of service or suitability.






MAGISTER **HYDRAULICS**

 973-344-5313

 973-344-5157

 info@magisterhyd.com

 www.magisterhyd.com

 45 Montgomery Street
P.O. BOX 150
Belleville, NJ 07109

Cage Code: 80JC2
Dunns Number: 07-929-2992
NAICS Code: 333995
JCP Certificate Number: 0083159

 **Advantage!**
gsaAdvantage.gov